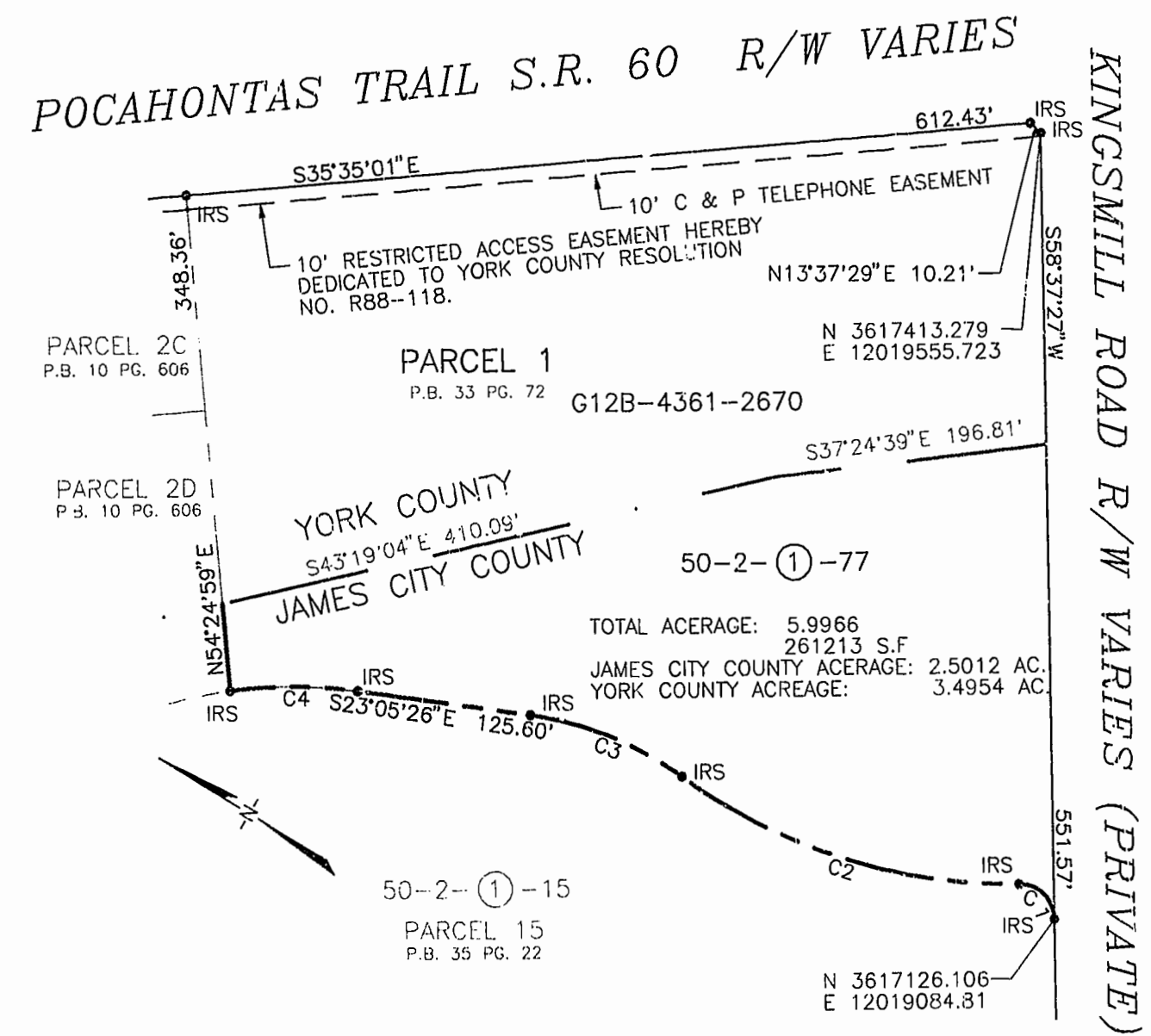
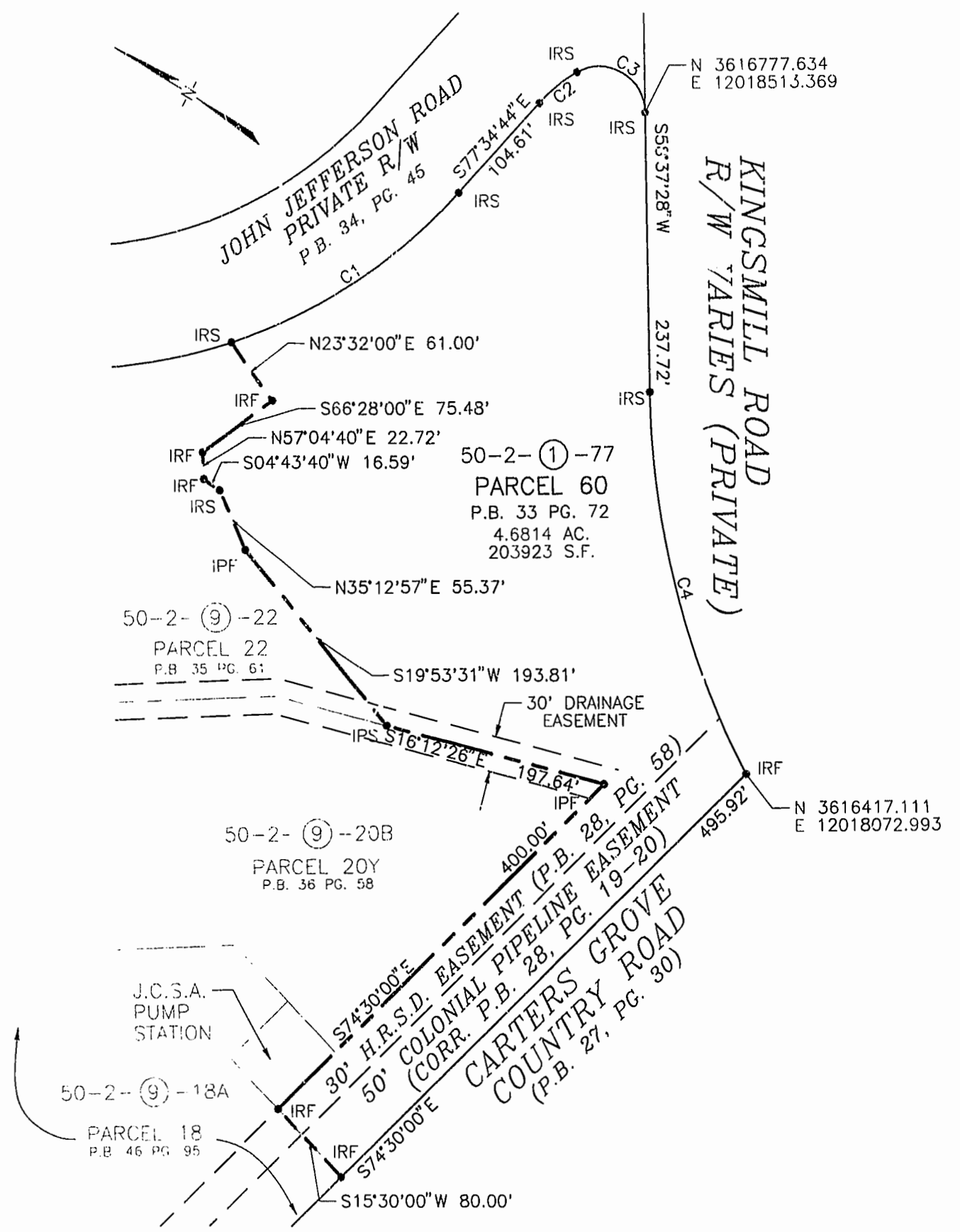


LINE	RADIUS	ARC	CHORD BEARING	CHORD	DELTA	TANGENT
C1	475.00'	239.97'	N63°06'21"W	237.43'	28°56'47"	122.61'
C2	141.56'	42.87'	S68°54'13"E	42.70'	17°21'03"	21.60'
C3	40.00'	82.97'	N00°48'06"W	68.88'	118°51'09"	67.71'
C4	715.82'	338.43'	N45°04'48"E	335.29'	27°05'20"	172.44'

PLAT OF SUBDIVISION
OF PARCELS 9, 10, 14, & 60
AND RE-SUBDIVISION OF BASIN B
BEING A PORTION OF PARCEL C
BUSCH CORPORATE CENTER - WILLIAMSBURG

ROBERTS DISTRICT JAMES CITY COUNTY, VIRGINIA
BRUTON DISTRICT YORK COUNTY, VIRGINIA

DATE: 9/22/00 SCALE: 1" = 100'
SHEET 2 OF 3



ACREAGE SUMMARY

TAX MAP PARCEL: NO. 50-2-1-77

JAMES CITY COUNTY: 28.7347 AC.
YORK COUNTY: 3.4954 AC.
TOTAL: 32.2301 AC.
PARCEL 1 YORK COUNTY: 3.4954 AC. JAMES CITY COUNTY: 2.5012 AC.
PARCEL 9&10 : 12.9309 AC.
PARCEL 14 : 4.4279 AC.
PARCEL 60 : 4.6814 AC.
REVISED BASIN B : 4.1933 AC.
REMAINING AREA: 0.000 AC.

LINE	RADIUS	ARC	CHORD BEARING	CHORD	DELTA	TANGENT
C1	25.00'	39.27'	S13°37'28"W	35.36'	90°00'00"	25.00'
C2	414.46'	258.86'	S13°28'59"E	254.67'	35°47'06"	133.81'
C3	246.74'	118.43'	S09°20'26"E	117.29'	27°30'00"	60.38'
C4	347.56'	92.34'	S30°42'07"E	92.07'	15°13'23"	46.45'



LANDMARK DESIGN GROUP
Engineers • Planners • Surveyors
Landscape Architects • Environmental Consultants

4029 Ironbound Road
Suite 100
Williamsburg, VA 23188
Tel. (757) 253-2975
Fax (757) 229-0049
Email: lmdg@landmarkdgb.com

Williamsburg/James City County
11:08 AM
Recorded 2 day of May 2001
DOCUMENT # 010007194
REISY B. WOOLRIDGE, CLERK OF CIRCUIT COURT

PLAT NO. 81 PAGE 22-39

