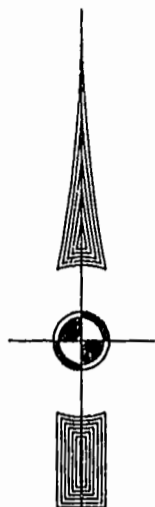


EXIST. 20' JAMES CITY COUNTY SERVICE  
 AUTHORITY SAN. SEWER EASEMENT AS  
 SHOWN IN AS-BUILT LOCATION. D.B. 141 - PG. 388



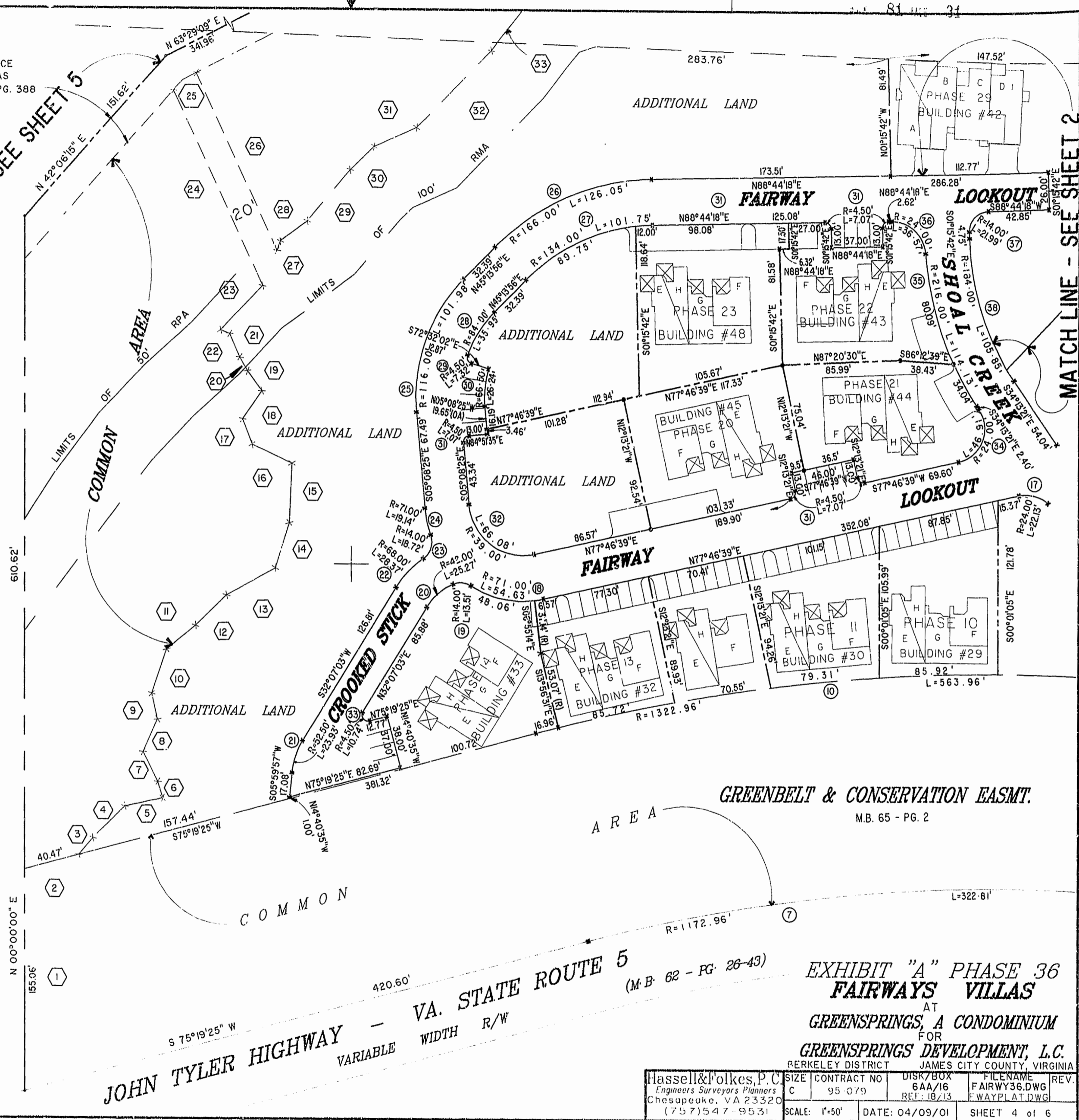
MATCH LINE - SEE SHEET 5

MATCHLINE - SEE SHEET 2

46-1-01-0-000  
 "GREENSPRINGS PLANTATION"  
 (DB 322, PG 254)

Williamsburg/James City County  
 3:32 PM  
 Recorded 23 day of April 2001  
 DOCUMENT # 010007175  
*Betsy Woolridge* Clerk  
 BETSY D. WOOLRIDGE, CLERK OF CIRCUIT COURT

PLAT RECORDED IN  
 P.B. NO. 61 PAGE 28-33



GREENBELT & CONSERVATION EASMT.  
 M.B. 65 - PG. 2

JOHN TYLER HIGHWAY - VA. STATE ROUTE 5  
 VARIABLE WIDTH R/W (M.B. 62 - PG. 26-43)

EXHIBIT "A" PHASE 36  
 FAIRWAYS VILLAS  
 AT  
 GREENSPRINGS, A CONDOMINIUM  
 FOR  
 GREENSPRINGS DEVELOPMENT, L.C.  
 BERKELEY DISTRICT JAMES CITY COUNTY, VIRGINIA

Hassell & Folkes, P.C. Engineers & Surveyors, Planners Chesapeake, VA 23320 (757) 547-9531	SIZE C	CONTRACT NO 95-079	DISK/BOX 6AA/16 REF: 18/13	FILENAME FAIRWAY36.DWG FWAYPLAT.DWG	REV.
SCALE: 1"=50'	DATE: 04/09/01	SHEET 4 of 6			