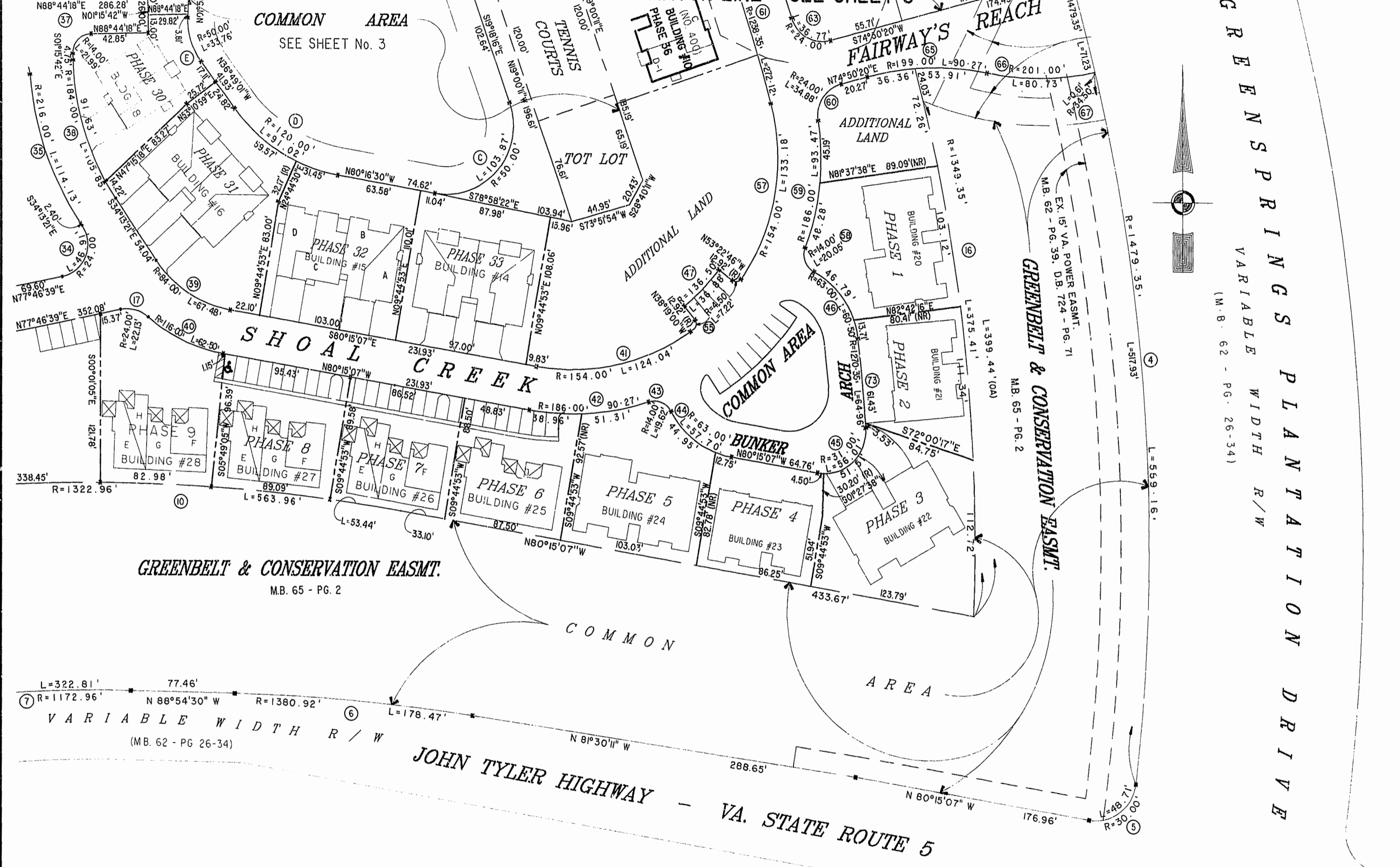


MATCH LINE SEE SHEET 4

MATCH LINE - SEE SHEET 3



GREENSPRINGS VARIABLE WIDTH R/W (M.B. 62 - PG. 26-34)

GREENBELT & CONSERVATION EASMT. M.B. 65 - PG. 2

VARIABLE WIDTH R/W (M.B. 62 - PG 26-34)

JOHN TYLER HIGHWAY - VA. STATE ROUTE 5

Williamsburg/James City County  
 3:30 PM  
 Recorded 23 day of April 2001  
 DOCUMENT # 010007175  
 Betsy D. Woolridge, Clerk of Circuit Court

PLAT RECORDED IN  
 P.B. NO. 87 PAGE 33

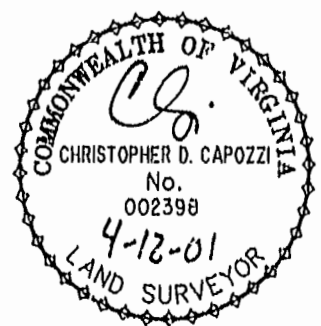


EXHIBIT "A" PHASE 36  
 FAIRWAYS VILLAS  
 AT  
 GREENSPRINGS, A CONDOMINIUM  
 FOR  
 GREENSPRINGS DEVELOPMENT, L.C.  
 BERKELEY DISTRICT JAMES CITY COUNTY, VIRGINIA

Hassell & Folkes, P.C. Engineers Surveyors Planners Chesapeake, VA 23320 (757)547-9531	SIZE CONTRACT NO C 95-079	DISK/BOX 6AA/16 REF: 18/13	FILENAME FAIRWY36.DWG WAYPLAT.DWG	REV.
SCALE: 1" = 50'	DATE: 04/09/01	SHEET 2 of 6		