

PHASE I
 SUBDIVISION OF
 A PORTION OF
 POWHATAN OF WILLIAMSBURG SECONDARY
 FOR CONVEYANCE TO
 CENTEX HOMES, INC.
 BERKELEY DISTRICT
 JAMES CITY COUNTY, VIRGINIA
 SCALE: 1"=40' DATE: 4/03/01
 SHEET 2 OF 2



**LANDMARK
 DESIGN GROUP**

Engineers • Planners • Surveyors
 Landscape Architects • Environmental Consultants
 4029 Ironbound Road, Suite 100
 Williamsburg, VA 23188
 Tel. (757) 253-2975 Fax (757) 229-0049
 Email: lmdg@landmarkdgb.com

N/F
 POWHATAN ENTERPRISES, INC.
 38-3-(01)-21
 PB. 30 PG. 36
 ZONE R-4

N/F
 POWHATAN ENTERPRISES, INC.
 38-3-(01)-21
 PB. 30 PG. 36
 ZONE R-4

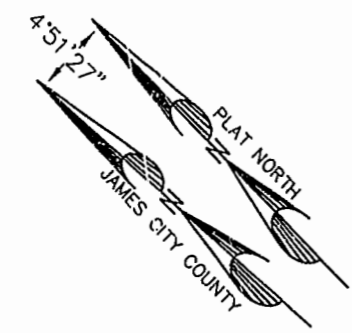
N/F
 POWHATAN ENTERPRISES, INC.
 38-3-(01)-21
 PB. 30 PG. 36
 ZONE R-4

N/F
 POWHATAN ENTERPRISES, INC.
 38-3-(01)-21
 PB. 30 PG. 36
 ZONE R-4

N3628573.1813
 E11985981.9538

N3628049.7286
 E11986362.3842

FUTURE POWHATAN SECONDARY R/W (SP-38-99)



C14

C1

C2

C3

C4

C5

C6

C7

C8

C9

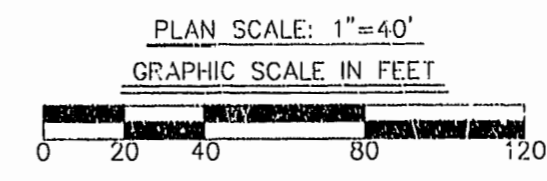
C10

C11

C12

Williamsburg/James City County
 11:40AM
 Recorded 23
 DOCUMENT 00/00/058
 Clerk
 BEISSY D. WOOLRIDGE, CLERK OF CIRCUIT COURT

PLAT RECORDED BY
 PD. NO. 81 PAGE 25/26



DRAWN BY: LFV
 CHKD. BY: SAR

PROJ. NO.: PH1 1730041-151.09
 DWG. NO.: 12.3796