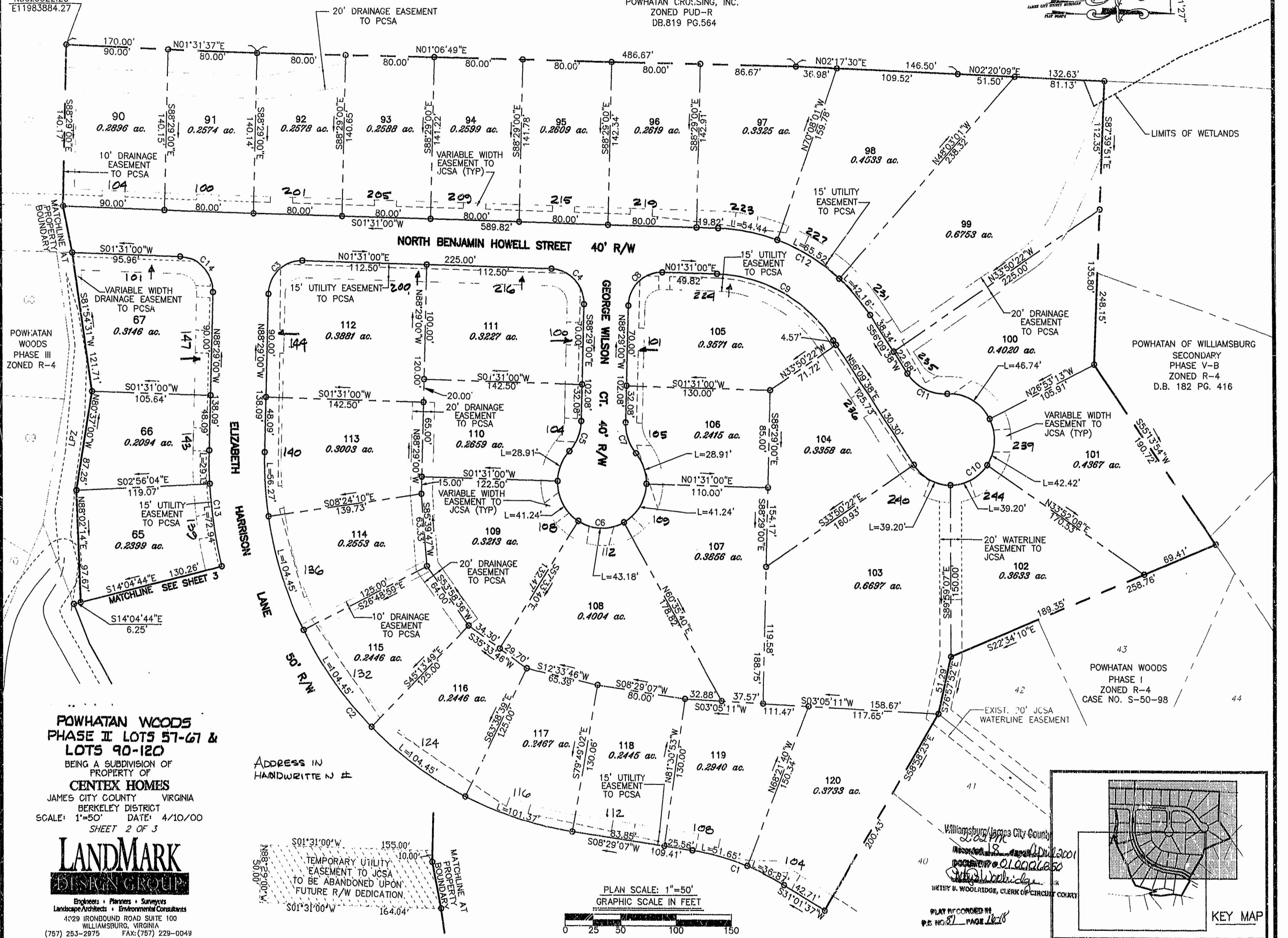


N3625522.20  
E11983884.27

N/F  
POWHATAN CROSSING, INC.  
ZONED PUD-R  
DB.819 PG.564

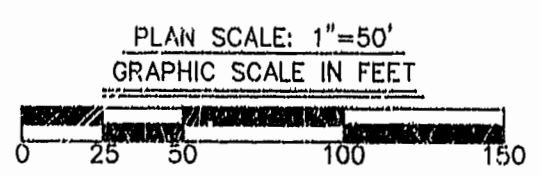


**POWHATAN WOODS  
PHASE II LOTS 57-67 &  
LOTS 90-120**  
BEING A SUBDIVISION OF  
PROPERTY OF  
**CENTEX HOMES**  
JAMES CITY COUNTY VIRGINIA  
BERKELEY DISTRICT  
SCALE: 1"=50' DATE: 4/10/00  
SHEET 2 OF 3

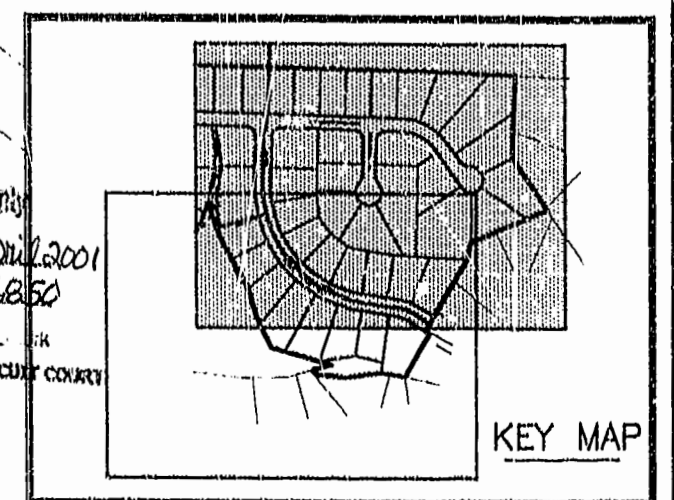
ADDRESS IN  
HANDWRITTEN #

TEMPORARY UTILITY  
EASEMENT TO JCSA  
TO BE ABANDONED UPON  
FUTURE R/W DEDICATION

**LANDMARK**  
DISIGN GROUP  
Engineers • Planners • Surveyors  
Landscape Architects • Environmental Consultants  
4029 IRONBOUND ROAD SUITE 100  
WILLIAMSBURG, VIRGINIA  
(757) 253-2975 FAX: (757) 229-0049



Williamsburg/James City County  
L. O. S. M.  
RECORDED IN PUBLIC RECORDS  
BOOK 101 PAGE 1650  
DIETLY U. WOODRIDGE, CLERK OF CIRCUIT COURT



KEY MAP

11472W