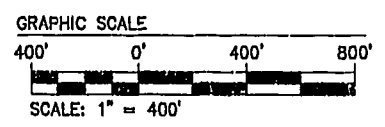
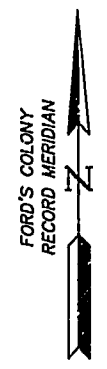
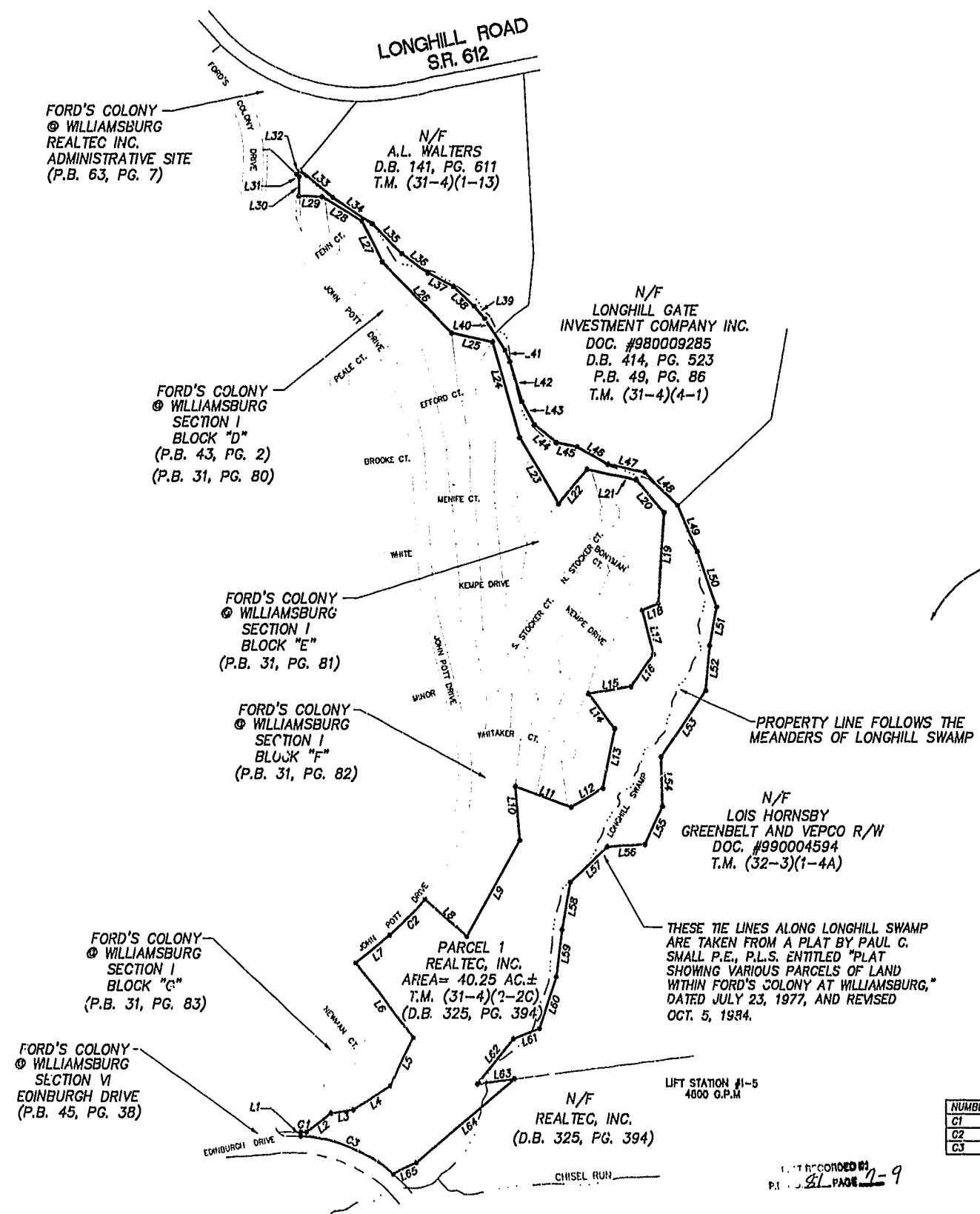


LINE TABLE

NUMBER	BEARING	DISTANCE
L1	N03°10'08"E	20.00'
L2	N53°17'47"E	151.24'
L3	N81°06'15"E	116.40'
L4	N57°41'22"E	218.89'
L5	N26°28'00"E	260.28'
L6	N38°06'54"W	458.05'
L7	N51°18'17"E	216.71'
L8	S49°40'31"E	274.00'
L9	N30°10'50"E	535.49'
L10	N04°25'09"W	260.04'
L11	S70°12'56"E	295.00'
L12	N59°57'35"E	185.92'
L13	N11°55'22"E	292.68'
L14	N37°43'43"W	21.21'
L15	N80°25'00"E	214.57'
L16	N36°38'03"E	195.00'
L17	N14°39'52"W	217.78'
L18	N67°05'38"E	87.63'
L19	N04°11'00"W	440.00'
L20	N41°11'10"W	212.00'
L21	N78°54'54"W	250.00'
L22	S40°42'56"W	218.00'
L23	N31°01'48"W	372.42'
L24	N16°01'30"W	481.05'
L25	N78°02'25"W	208.00'
L26	N45°15'22"W	488.00'
L27	N26°23'40"W	221.81'
L28	N60°06'04"W	230.71'
L29	N88°27'56"W	112.94'
L30	N01°23'50"E	94.93'
L31	N48°02'22"W	15.72'
L32	N41°03'50"E	24.74'
L33	S50°42'10"E	205.40'
L34	S57°09'10"E	232.55'
L35	S45°59'10"E	209.30'
L36	S53°56'10"E	158.60'
L37	S62°56'10"E	140.70'
L38	S47°41'10"E	141.70'
L39	S40°35'00"E	82.00'
L40	S33°35'10"E	180.65'
L41	S23°07'13"E	59.99'
L42	S16°48'32"E	202.48'
L43	S29°11'09"E	127.14'
L44	S5°39'13"E	140.25'
L45	S78°21'59"E	104.14'
L46	S62°07'11"E	175.35'
L47	S77°40'13"E	187.32'
L48	S45°21'34"E	227.68'
L49	S23°43'22"E	243.59'
L50	S19°29'59"E	282.42'
L51	S10°48'00"W	189.47'
L52	S05°43'00"W	218.93'
L53	S35°14'00"W	390.97'
L54	S01°00'00"E	240.65'
L55	S25°47'00"W	204.17'
L56	S86°41'00"W	187.93'
L57	S47°14'00"W	255.50'
L58	S10°27'00"W	231.89'
L59	S07°42'00"W	231.40'
L60	S19°12'00"W	262.95'
L61	S69°06'00"W	140.35'
L62	S39°52'20"W	282.96'
L63	N82°46'23"E	186.00'
L64	S50°42'43"W	638.24'
L65	S64°57'23"W	126.70'

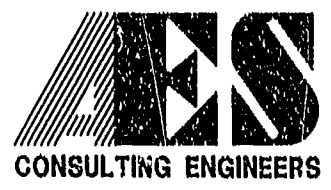


NOTE:
EXISTING DRAINAGE AND UTILITY EASEMENTS
ARE NOT SHOWN FOR PLAT CLARITY

CURVE TABLE

NUMBER	DELTA	RADIUS	LENGTH	TANGENT	CHORD	CH. BEAR
C1	01°53'25"	800.00	26.39	113.20	26.39	S85°53'10"E
C2	10°58'48"	1282.68	245.81	123.28	245.43	N43°48'53"E
C3	36°56'20"	780.00	502.87	260.52	494.21	N68°21'42"W

NOT RECORDED IN
PLAT BOOK PAGE 7-9



5248 Olde Towne Road, Suite 1
Williamsburg, Virginia 23188
(757) 253-0040
Fax (757) 220-8994

PLAT SHOWING A PROPOSED
CONSERVATION AREA ON TWO PARCELS
OF LAND BEING A PART OF
FORD'S COLONY AT WILLIAMSBURG

POWhatan/BURKELEY DISTRICT JAMES CITY COUNTY VIRGINIA



No.	DATE	REVISION / COMMENT / NOTE	BY

Designed AES	Drawn JFS/PWM
Scale 1"=400'	Date 11/16/00
Project No. 5052-96	
Drawing No. 2 OF 3	