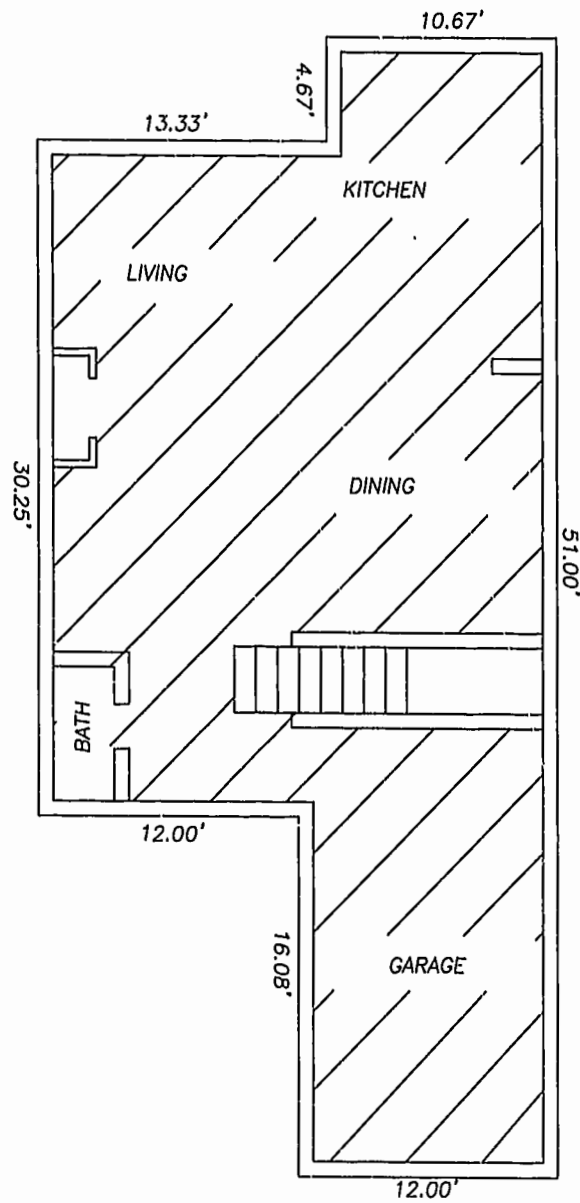
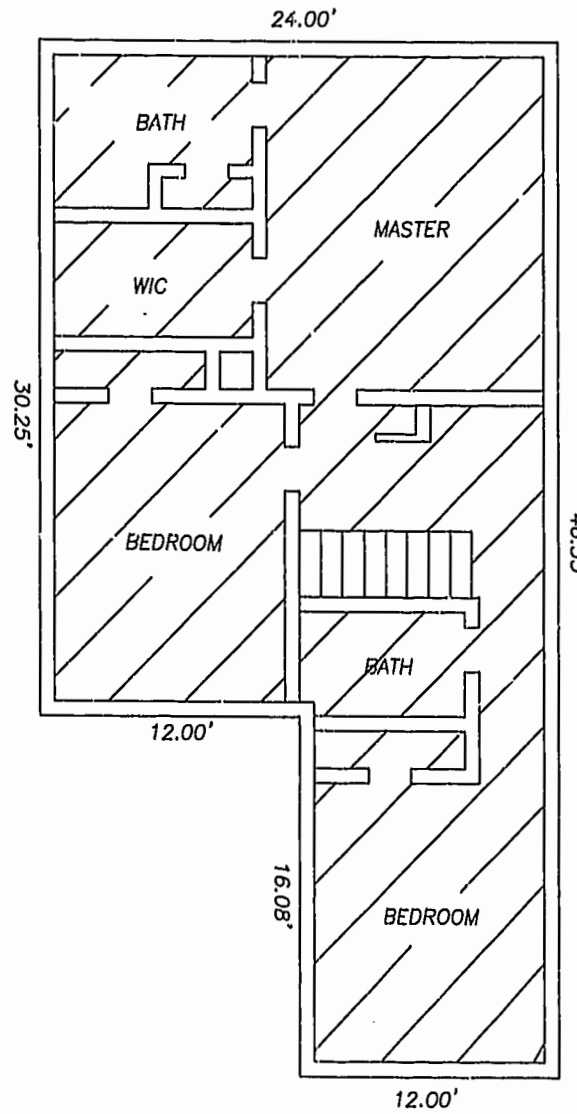


**NOTES:**

1. ALL BUILDING DIMENSIONS AND INTERIOR DIMENSIONS ARE IN FEET.
2. THE PORTION OF THE IMPROVEMENTS DESIGNATED AS A UNIT IS SUBJECT TO THE DEFINITION OF THE THE TERM "UNIT" IN THE DECLARATION. EXTERIOR WALLS, DIVIDING WALLS BETWEEN UNITS, AND COLUMNS OR LOAD BEARING MEMBERS WHICH SUPPORT MORE THAN ONE UNIT ARE NOT PART OF THE UNIT.
3. INTERIOR UNIT CONFIGURATIONS AND PARTITIONS AS DEPICTED HEREON ARE FOR ILLUSTRATION ONLY AND MAY NOT REPRESENT THE INTERIOR OF A UNIT AS ACTUALLY BUILT.



MODEL C  
FIRST FLOOR



MODEL C  
SECOND FLOOR

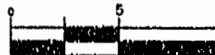
**LEGEND**

UNIT AREA

PLAT RECORDED IN  
P.L. NO. 80, PAGE 88-92

Williamsburg/James City County  
1:36 PM  
d. 22 day of March 2001  
DOCUMENT # 010004237  
Step B. Worsham, Clerk  
by Claudia A. Burkholz, Dy Clerk

**GRAPHIC SCALE**



SCALE: 1"=5'



THE UNDERSIGNED CERTIFIES THAT THESE PLANS ARE ACCURATE AND COMPLY WITH THE PROVISIONS OF CODE OF VIRGINIA, SECTION 55-79.5BB AND THAT ALL UNITS OR PORTIONS THEREOF DEPICTED HEREON AND ALL COMMON ELEMENTS HAVE BEEN SUBSTANTIALLY COMPLETED.

SIGNED:   
W. PAGE COCKRELL, L.S.

EXHIBIT B-7

**SUPPLEMENTAL CONDOMINIUM PLAN  
OF  
CROMWELL RIDGE CONDOMINIUM  
JAMES CITY COUNTY, VIRGINIA**

DATE: 01/26/01    SHEET 5 OF 5    SCALE: 1"=5'  
PROJECT NO: 30807.00    DRAWN BY: SAA



Vanasse Hangen Brustlin, Inc.  
Transportation Land Development Environmental Services  
11832 Rock Land Drive, Suite 203  
Newport News, Virginia 23606  
(757) 875-3396 • FAX (757) 875-0757