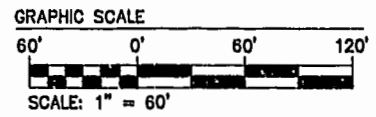


NOTE:  
AT THE TIME OF THIS SURVEY  
ROADS AND SIDEWALK ARE UNDER  
CONSTRUCTION. (PROPOSED  
LOCATION SHOWN). WATER &  
& SANITARY SYSTEM ARE IN PLACE.



N OR F  
WARBURTON & MAHONE ESTATE  
TAX PARCEL 282-A-00'

VARIABLE WIDTH CITY OF WILLIAMSBURG  
SAN. SEWER & UTILITY  
EASEMENT (DB 75/507 &  
DB 80/481)



N/F  
JAMESTOWN ACADEMY  
TAX PARCEL 281-03-A

NOTE:  
THE AREAS OF PARCEL ONE AND PHASE ONE NOW  
REFLECT THE PROPOSED SUBDIVISION OF PARCEL  
ONE AS SHOWN BY A PLAT BY AES CONSULTING  
ENGINEERS ENTITLED "PLAT OF SUBDIVISION  
SHOWING PARCEL 1A CONTAINING 0.978 ACRES±  
OWNED BY 752 L.L.C." DATED 11/22/2000.

AREA  
TOTAL AREA PARCEL 1= 10.935 AC±

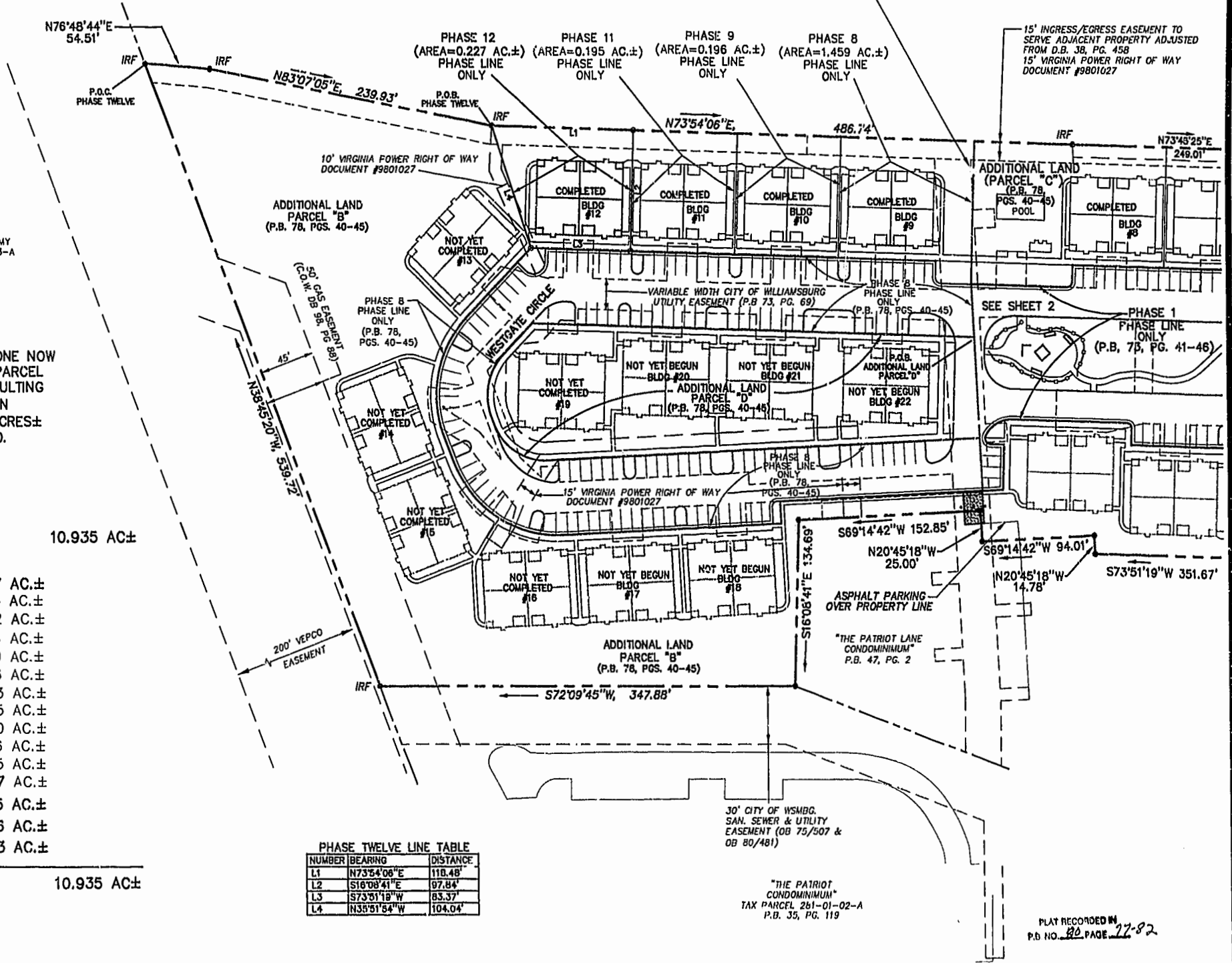
- PHASE TWELVE= 0.227 AC.±
- PHASE ELEVEN= 0.195 AC.±
- PHASE TEN= 0.222 AC.±
- PHASE NINE= 0.196 AC.±
- PHASE EIGHT= 1.459 AC.±
- PHASE SEVEN= 0.216 AC.±
- PHASE SIX= 0.343 AC.±
- PHASE FIVE= 0.235 AC.±
- PHASE FOUR= 0.200 AC.±
- PHASE THREE= 0.196 AC.±
- PHASE TWO= 0.195 AC.±
- PHASE ONE= 2.377 AC.±

ADDITIONAL AREA (PARCEL "B")= 3.585 AC.±  
ADDITIONAL AREA (PARCEL "C")= 0.396 AC.±  
ADDITIONAL AREA (PARCEL "D")= 0.893 AC.±

TOTAL= 10.935 AC±

PHASE TWELVE LINE TABLE

NUMBER	BEARING	DISTANCE
L1	N73°54'06"E	118.48'
L2	S18°08'41"E	97.84'
L3	S73°51'19"W	83.37'
L4	N35°51'54"W	104.04'

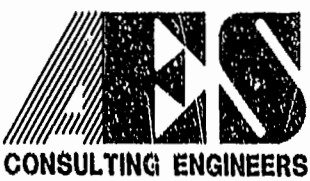


30' CITY OF WSMBG.  
SAN. SEWER & UTILITY  
EASEMENT (DB 75/507 &  
DB 80/481)

"THE PATRIOT  
CONDOMINIUM"  
TAX PARCEL 261-01-02-A  
P.B. 35, PG. 119

PLAT RECORDED IN  
P.D. NO. 82 PAGE 77-82

8395P123.DWG



5248 Olde Towne Road, Suite 1  
Williamsburg, Virginia 23188  
(757) 253-0040  
Fax (757) 220-8994

PLAT OF CONDOMINIUM  
WESTGATE AT WILLIAMSBURG,  
A CONDOMINIUM  
PHASE TWELVE  
OWNED BY: 752 L.L.C.,  
A VIRGINIA LIMITED LIABILITY COMPANY  
CITY OF WILLIAMSBURG VIRGINIA



No.	DATE	REVISION / COMMENT / NOTE	BY

Designed GTW/ADS	Drawn JFS
Scale 1" = 60'	Date 2/13/01
Project No. 8395-6	
Drawing No. 3 OF 6	