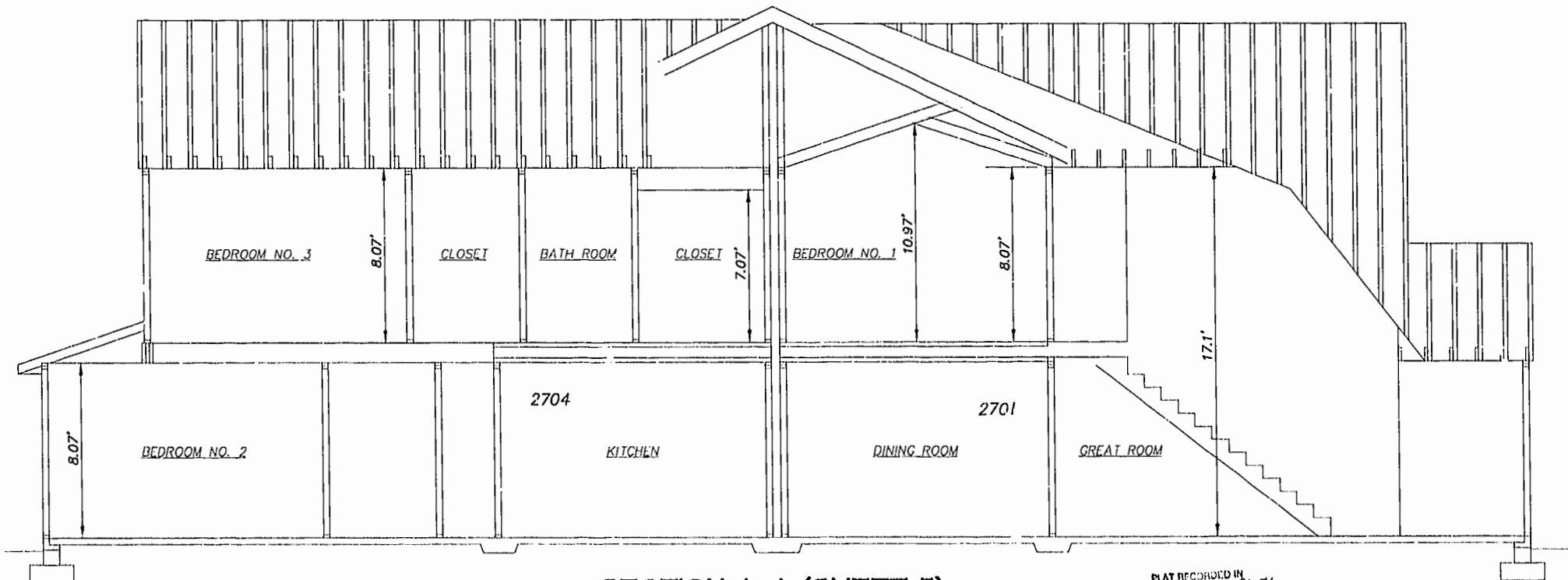


SECTION B-B (SHEET 5)

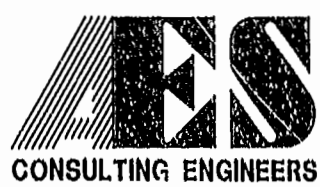
THIS PLAT OF CORRECTION ADJUSTS THE BOUNDARY OF PHASE ONE, WESTGATE AT WILLIAMSBURG, A CONDOMINIUM TO EXCLUDE 0.978 ACRES ERRONEOUSLY INCLUDED IN PHASE ONE AND SHOWN ON A PLAT RECORDED AT P.B. 74, PAGES 29-34. THIS IS THE ONLY CORRECTION TO THE ABOVE REFERENCED PLAT.



SECTION A-A (SHEET 5)

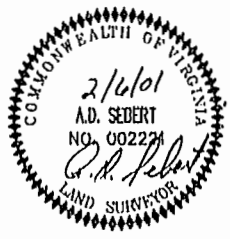
PLAT RECORDED IN P.B. NO. 80, PAGE 71-76

22.03.01.13.20 8.39560Rc.dwg



5248 Olde Towne Road, Suite 1
 Williamsburg, Virginia 23188
 (757) 253-0040
 Fax (757) 220-8994

PLAT OF CORRECTION
 PLAT OF CONDOMINIUM
 WESTGATE AT WILLIAMSBURG,
 A CONDOMINIUM
 PHASE ONE
 OWNED BY: 752 L.L.C.,
 A VIRGINIA LIMITED LIABILITY COMPANY
 CITY OF WILLIAMSBURG VIRGINIA



Recorded 19 day of March 2001	
DOCUMENT # 010353	
[Signature]	
[Signature]	
No.	DATE
REVISION / COMMENT / NOTE	
BY	

Designed GTW/ADS	Drawn JFS
Scale 1" = 10'	Date 2/06/01
Project No. 8395-6	
Drawing No. 6 OF 6	

Williamsburg, James City County