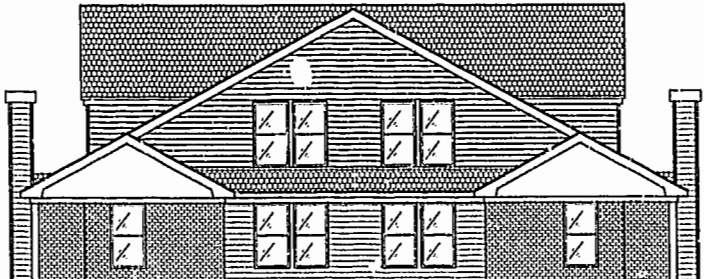
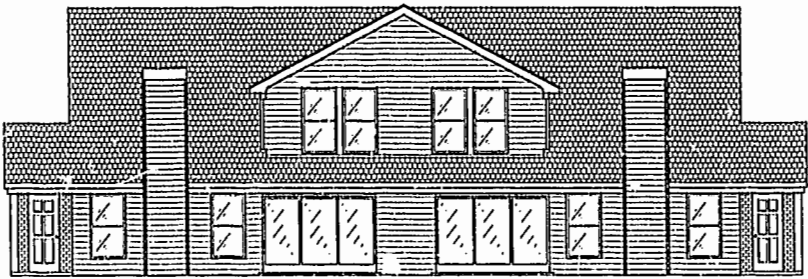
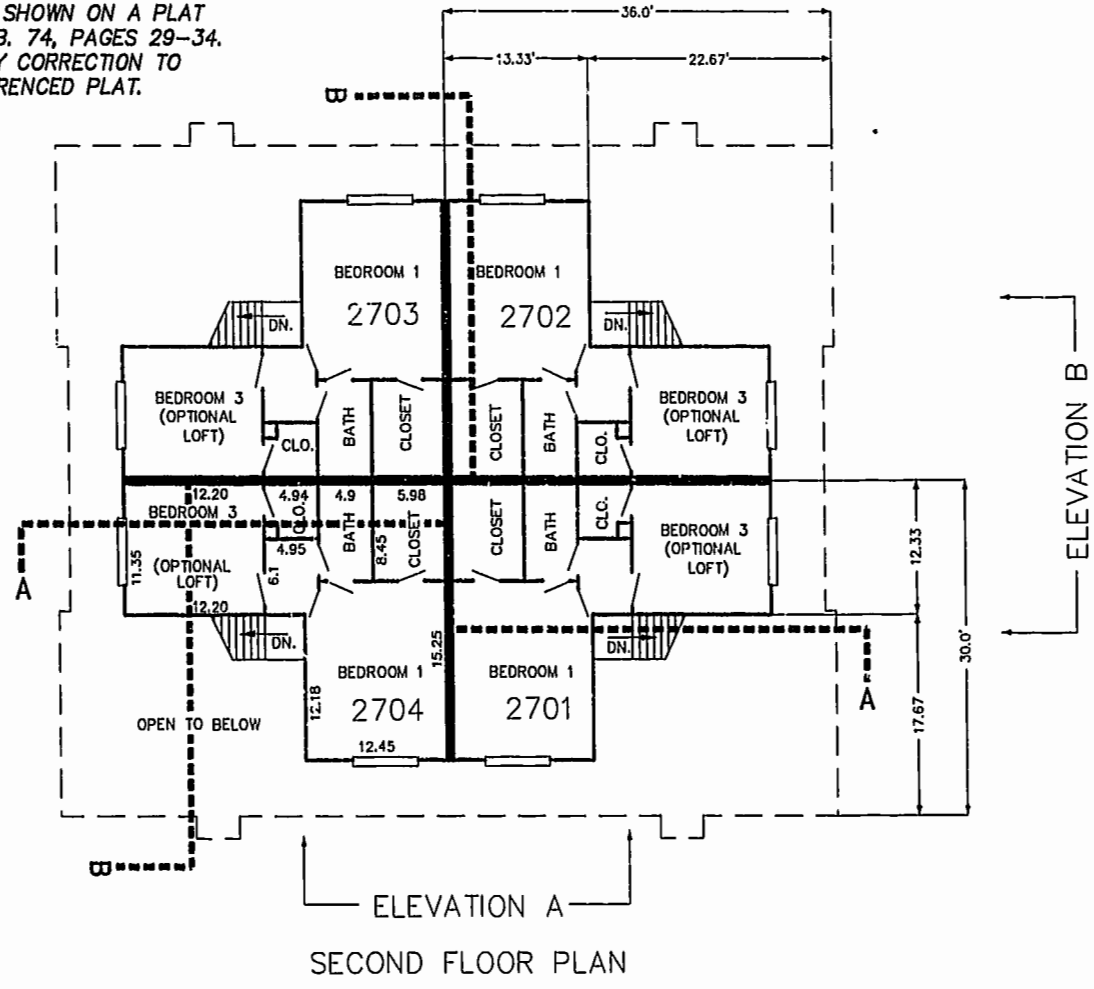
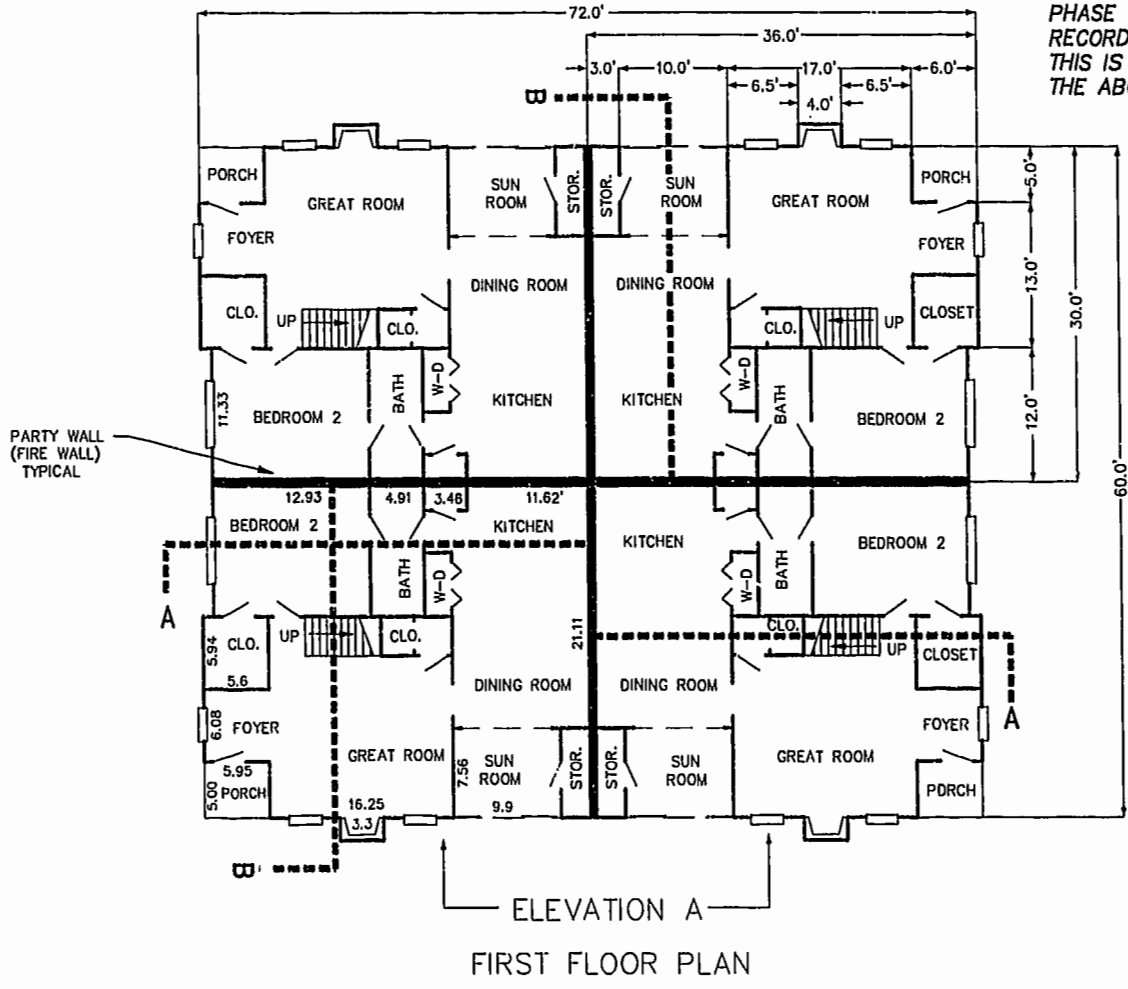


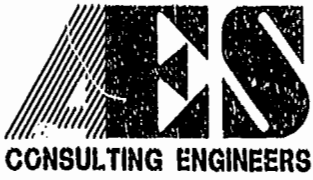
THIS PLAT OF CORRECTION ADJUSTS THE BOUNDARY OF PHASE ONE, WESTGATE AT WILLIAMSBURG, A CONDOMINIUM TO EXCLUDE 0.978 ACRES ERRONEOUSLY INCLUDED IN PHASE ONE AND SHOWN ON A PLAT RECORDED AT P.B. 74, PAGES 29-34. THIS IS THE ONLY CORRECTION TO THE ABOVE REFERENCED PLAT.



Williamsburg/James City County  
 Received 11:21 AM 19 day of June 2001  
 DOCUMENT # 010355  
 Betsy N. Woolridge, Clerk

PLAT RECORDED IN P.B. NO. 82 PAGE 7-76

BETSY N. WOOLRIDGE, CLERK OF CIRCUIT COURT



5248 Olde Towne Road, Suite 1  
 Williamsburg, Virginia 23188  
 (757) 253-0040  
 Fax (757) 220-8894

PLAT OF CORRECTION  
 PLAT OF CONDOMINIUM  
 WESTGATE AT WILLIAMSBURG,  
 A CONDOMINIUM  
 PHASE ONE  
 OWNED BY: 752 L.L.C.,  
 A VIRGINIA LIMITED LIABILITY COMPANY  
 CITY OF WILLIAMSBURG VIRGINIA



No.	DATE	REVISION / COMMENT / NOTE	BY

Designed GTW/ADS	Drawn JFS
Scale 1" = 10'	Date 2/08/01
Project No. 8395-6	
Drawing No. 5 OF 6	

83956R5.dwg 02.CS.01-13:19 JFS