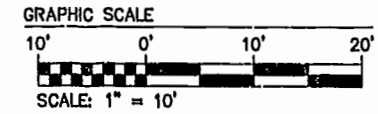
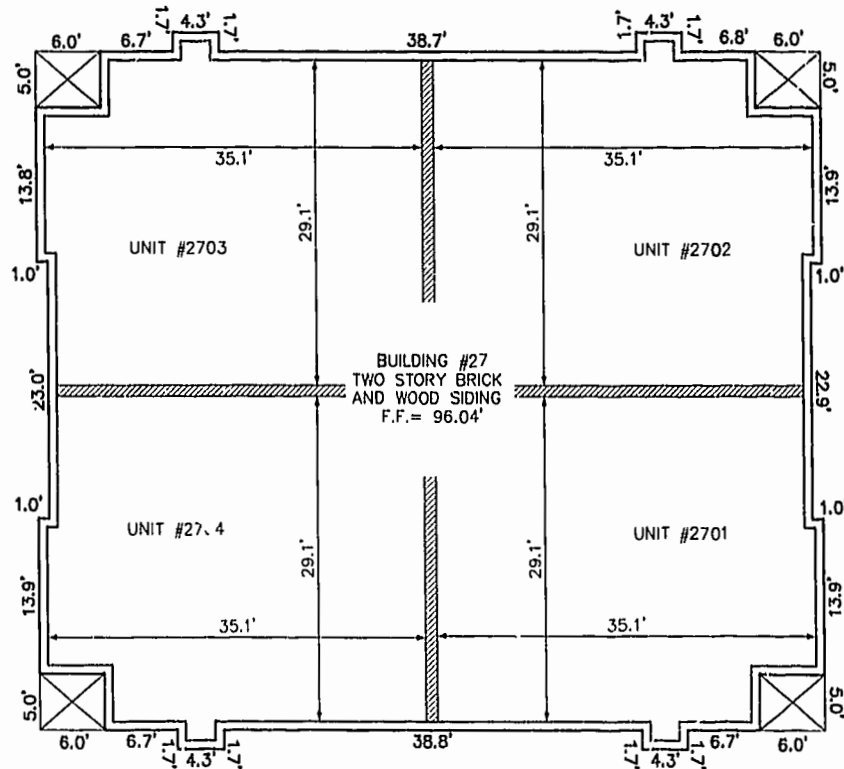


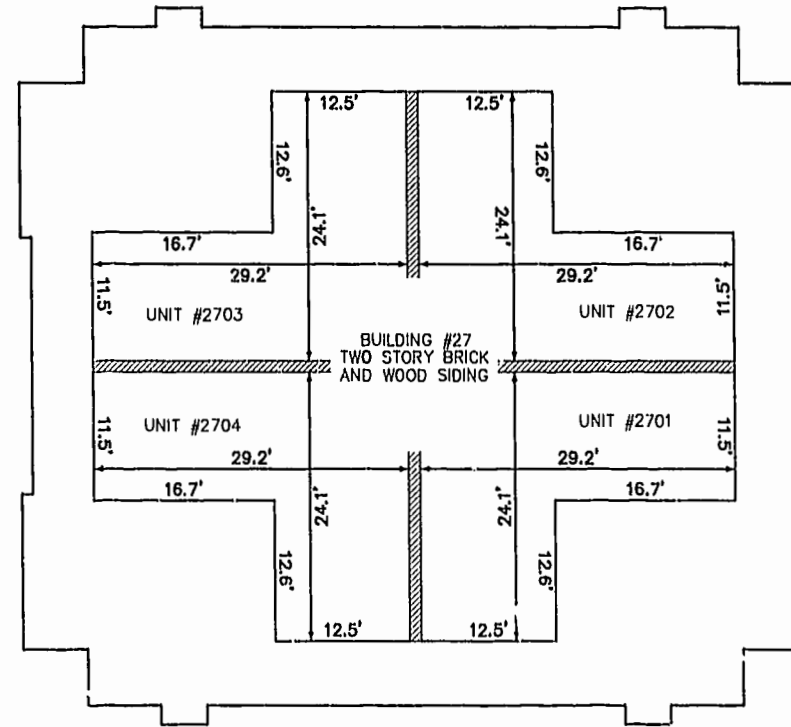
BUILDING NUMBER	UNIT NUMBER	STREET ADDRESS
27	2701	2701 WESTGATE CIRCLE
27	2702	2702 WESTGATE CIRCLE
27	2703	2703 WESTGATE CIRCLE
27	2704	2704 WESTGATE CIRCLE



THIS PLAT OF CORRECTION ADJUSTS THE BOUNDARY OF PHASE ONE, WESTGATE AT WILLIAMSBURG, A CONDOMINIUM TO EXCLUDE 0.978 ACRES ERRONEOUSLY INCLUDED IN PHASE ONE AND SHOWN ON A PLAT RECORDED AT P.B. 74, PAGES 29-34. THIS IS THE ONLY CORRECTION TO THE ABOVE REFERENCED PLAT.



FRONT OF BUILDING
FIRST FLOOR

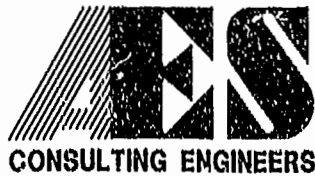


FRONT OF BUILDING
SECOND FLOOR

Williamsburg/James City County
 Received 19 day of March 2001
 REC'D AT # 010355
 Patsy B. Woolridge, Clerk

PLAT RECORDED BY P.B. NO. 80 PAGE 7-7

02.08.01-13:18 JFS 839560R4.dwg



5248 Olde Towne Road, Suite 1
 Williamsburg, Virginia 23188
 (757) 253-0040
 Fax (757) 220-8994

PLAT OF CORRECTION
 PLAT OF CONDOMINIUM
 WESTGATE AT WILLIAMSBURG,
 A CONDOMINIUM
 PHASE ONE
 OWNED BY: 752 L.L.C.,
 A VIRGINIA LIMITED LIABILITY COMPANY
 CITY OF WILLIAMSBURG VIRGINIA



No.	DATE	REVISION / COMMENT / NOTE	BY

Designed GTW/ADS	Drawn JFS
Scale 1" = 10'	Date 2/06/01
Project No. 8395-6	
Drawing No. 4 OF 6	