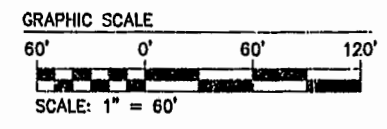
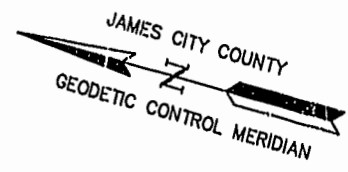


LOT CURVE TABLE

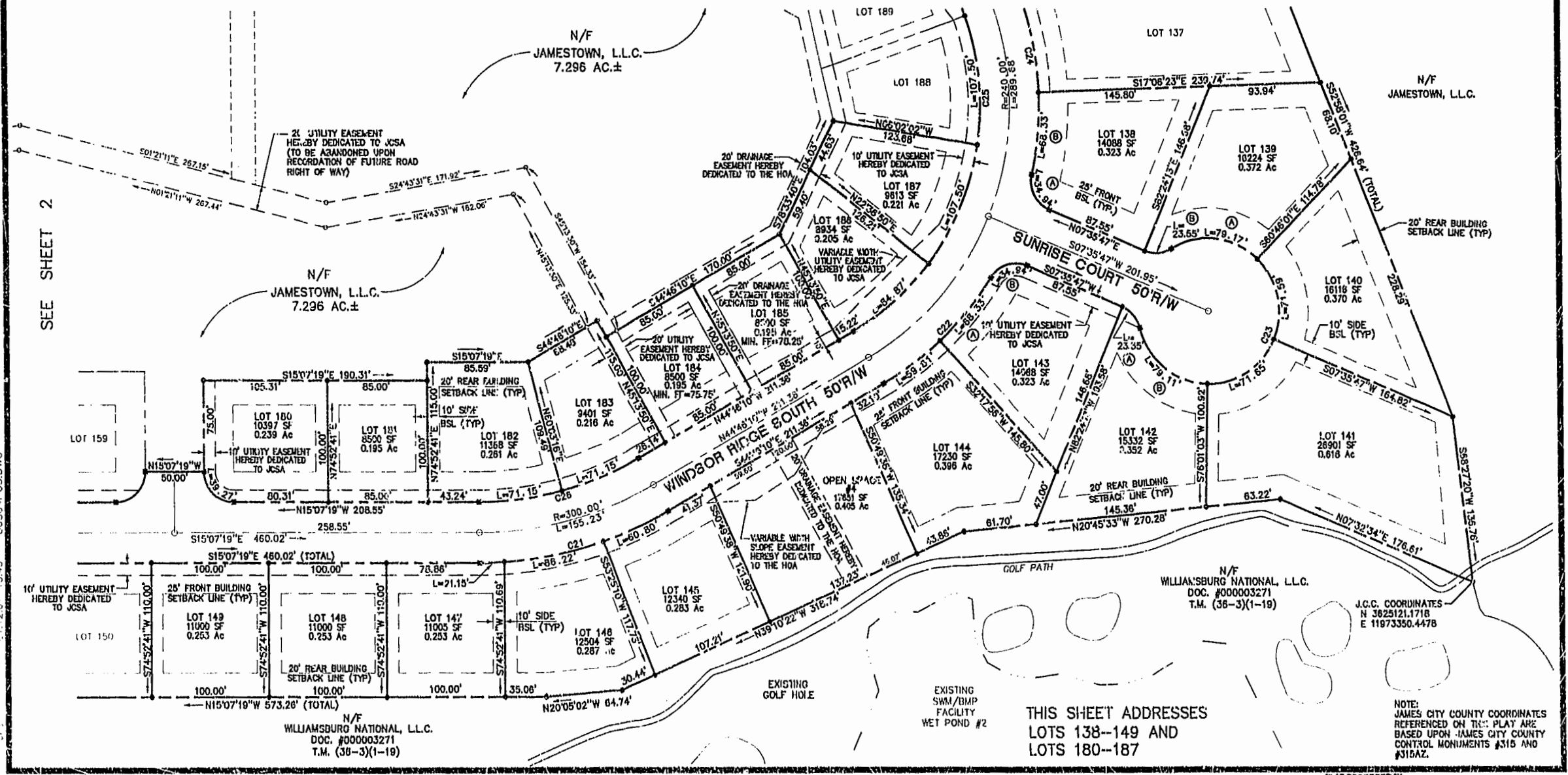
LOT	DELTA	RADIUS	LENGTH	TANGENT	CHORD	CH. BEAR
138 A	80°04'19"	25.00	34.94	21.00	32.16	N47°37'56"E
138 B	14°46'28"	265.00	68.33	34.21	66.14	N80°16'51"E
139 A	7°36'17"	00.00	78.17	48.54	73.55	N08°34'10"W
139 B	53°58'05"	25.00	23.55	12.73	22.69	N19°23'18"W
140	86°21'48"	60.00	71.59	40.75	67.42	N83°24'53"E
141	68°25'18"	60.00	71.65	40.75	67.47	S48°11'35"E
142 A	53°58'05"	25.00	23.55	12.73	22.69	S34°34'46"W
142 B	7°36'17"	60.00	78.11	46.50	73.50	S23°47'28"W
143 A	14°46'28"	265.00	68.33	34.38	68.14	S85°05'18"E
143 B	80°04'19"	25.00	34.94	21.00	32.16	S32°26'22"E
144	12°55'54"	265.00	59.81	30.03	69.68	S51°14'07"E
145	10°43'05"	325.00	80.60	30.49	60.71	S39°24'37"E
146	18°12'00"	325.00	66.22	43.38	65.97	S26°27'05"E
147	03°43'48"	325.00	21.15	10.58	21.19	S18°59'12"E
160	90°03'00"	25.00	39.27	25.00	35.30	N29°52'41"E
162	14°49'25"	275.00	71.15	35.77	70.95	N22°32'02"W
163	14°49'25"	275.00	71.15	35.77	70.95	N37°21'27"W
189	22°37'00"	215.00	82.87	42.89	84.32	N56°04'40"W
137	28°38'52"	215.00	107.50	54.90	106.38	N81°42'36"W

R/W CURVE TABLE

NUMBER	DELTA	RADIUS	LENGTH	TANGENT	CHORD	CH. BEAR
C21	28°38'50"	325.00	168.17	88.01	168.30	S28°56'44"E
C22	27°42'22"	285.00	128.14	65.35	126.90	S58°37'21"E
C23	28°58'10"	60.00	301.52	70.89	302.24	S82°24'13"E
C24	49°13'00"	265.00	228.01	121.61	221.05	N63°01'08"E
C25	121°54'53"	215.00	457.48	387.19	375.93	S74°16'25"W
C26	28°38'50"	275.00	142.30	72.78	140.71	N28°56'44"W

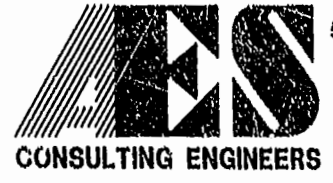


SEE SHEET 4



THIS SHEET ADDRESSES  
LOTS 138-149 AND  
LOTS 180-187

NOTE: JAMES CITY COUNTY COORDINATES REFERENCED ON THIS PLAT ARE BASED UPON JAMES CITY COUNTY CONTROL MONUMENTS #315 AND #316AZ.



5248 Olde Towne Road, Suite 1  
Williamsburg, Virginia 23188  
(757) 253-0040  
Fax (757) 220-8994

PLAT OF SUBDIVISION  
AND BOUNDARY LINE ADJUSTMENT  
GREENSPRINGS WEST  
PHASE III  
LOTS 118-126, 136-159 AND 180-201  
BEING THE PROPERTY OF JAMESTOWN, L.L.C.  
BERKELEY DISTRICT JAMES CITY COUNTY VIRGINIA



PLAT RECORDED IN 853mm

NO.	DATE	REVISION / COMMENT / NOTE	BY
3	1/12/01	REVISED EASEMENTS PER JCSA COMMENT	JFS
2	12/8/00	REVISED TO SHOW SIGN EASEMENTS PER OWNER COMMENTS	JFS
1	11/7/00	REVISED LOTS PER OWNER COMMENTS	JFS

Designed	Drawn
HWP/GWO	JFS
Scale	Date
1"=60'	9/8/00
Project No.	8656-4
Drawing No.	3 OF 4