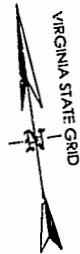


VICINITY MAP



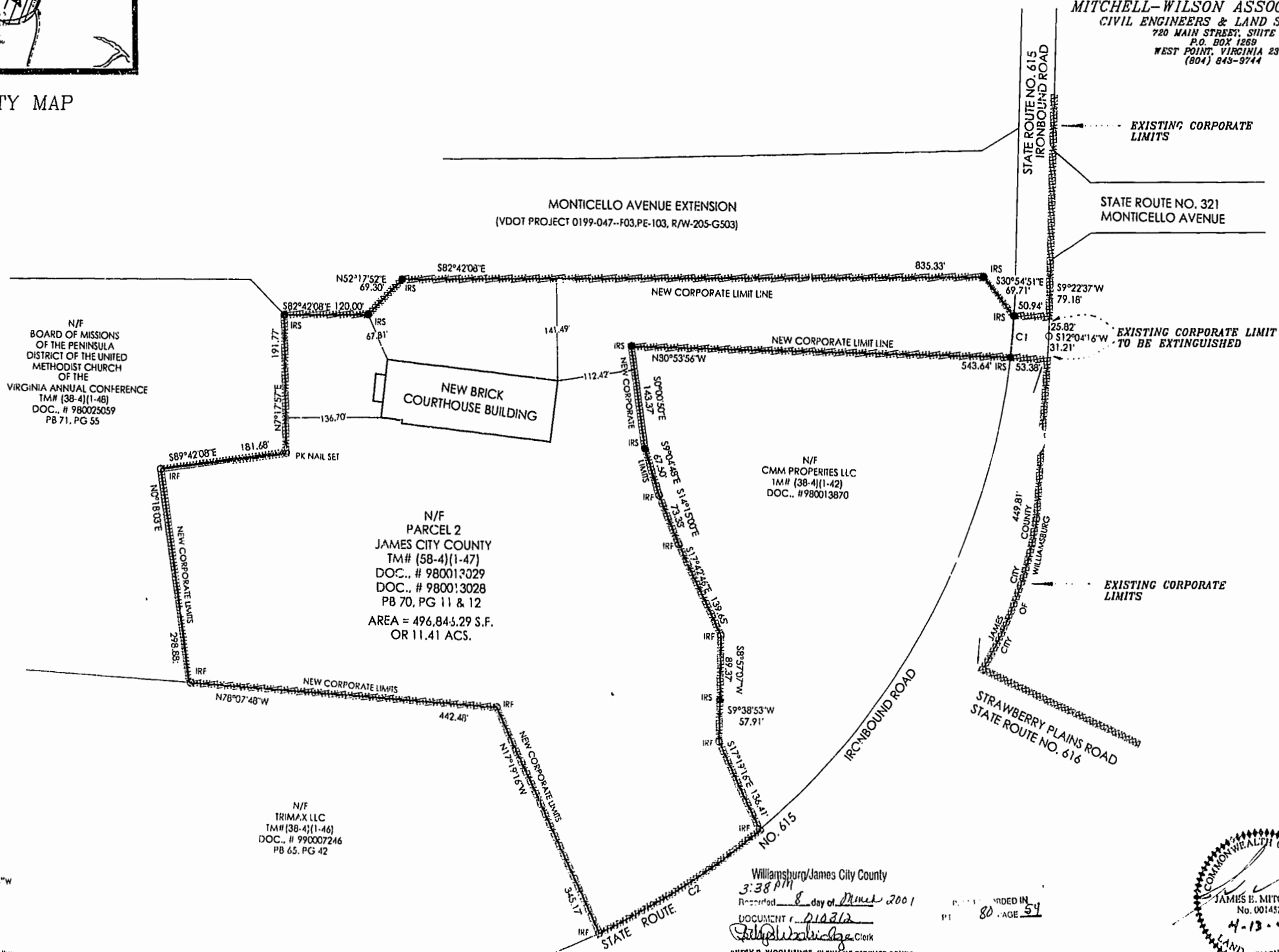
**PLAT SHOWING
RELOCATION OF WILLIAMSBURG
CORPORATE LIMITS**

TO INCLUDE PROPERTY JOINTLY OWNED BY
CITY OF WILLIAMSBURG

AND
JAMES CITY COUNTY

LOCATED: BERKELEY MAGISTERIAL DISTRICT,
JAMES CITY COUNTY, VIRGINIA
DATE: APRIL 13, 2000 SCALE: 1" = 60'

MITCHELL-WILSON ASSOCIATES, P.C.
CIVIL ENGINEERS & LAND SURVEYORS
720 MAIN STREET, SUITE 112
P.O. BOX 1269
WEST POINT, VIRGINIA 23181
(804) 843-9744



Williamsburg/James City County
3:38 PM
Recorded 8 day of March 2001
DOCUMENT # 010312
T. D. Woolridge, Clerk
NETSY B. WOOLLIDGE, CLERK OF CIRCUIT COURT

