

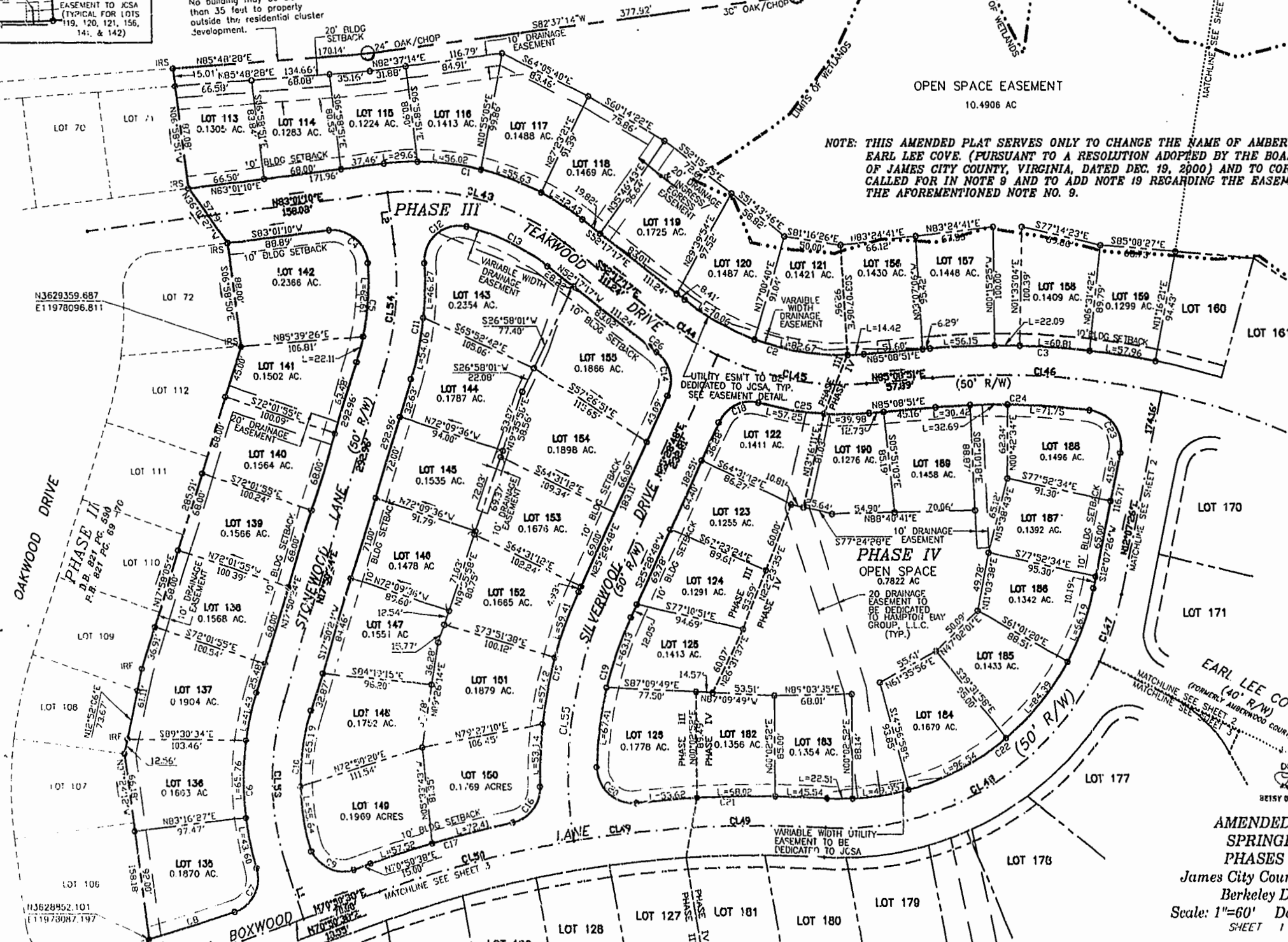
N/F
CHARLES NEW
(P.D. 6 PG. 31)
D.B. 28 PG. 293)

THE COORDINATES SHOWN ON THIS PLAT ARE REFERENCED TO VIRGINIA STATE PLANE COORDINATES SOUTH ZONE (NAD83), IN U.S. SURVEY FEET, BASED ON JAMES CITY COUNTY MONUMENT STATION NO. 322.

No building may be closer than 35 feet to property outside the residential cluster development.

OPEN SPACE EASEMENT
10.4906 AC

NOTE: THIS AMENDED PLAT WOULD CHANGE THE NAME OF AMBERWOOD COURT TO EARL LEE COVE (PURSUANT TO A RESOLUTION ADOPTED BY THE BOARD OF SUPERVISORS OF JAMES CITY COUNTY, VIRGINIA, DATED DEC. 19, 2000) AND TO CORRECT THE EASEMENT CALLED FOR IN NOTE 9 AND TO ADD NOTE 19 REGARDING THE EASEMENT CALLED FOR IN THE AFOREMENTIONED NOTE NO. 9.

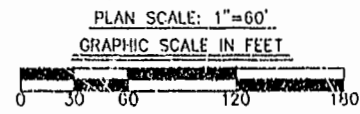


EARL LEE COVE
(40' R/W)
Williamsburg/James City County
12:02 PM
12/17/01
DOCUMENT # 110002572
Betsy S. Woolridge, Clerk
BETSY S. WOOLRIDGE, CLERK OF CIRCUIT COURT

AMENDED PLAT
SPRINGHILL
PHASES 3 & 4
James City County, Virginia
Berkeley District
Scale: 1"=60' Date: 01/17/01
SHEET 1 OF 4

SHEET INDEX

SHEET 1	: Lots 113-125; Lots 135-159; Lots 182-190
SHEET 2	: Lots 160-173
SHEET 3	: Lots 127-134; Lots 174-181
SHEET 4	: Curve Table; Notes; Certifications



LANDMARK DESIGN GROUP
Engineers • Planners • Surveyors
Landscape Architects • Environmental Consultants

4029 Ironbound Road
Suite 100
Williamsburg, VA 23188
Tel. (757) 251-2975
Fax (757) 221-0049
Email: lmdg@landmarkdgb.com

5544 Greenwich Road
Suite 200
Virginia Beach, VA 23462
Tel. (757) 473-2000
Fax (757) 497-7933
Email: lmdg@landmarkdgb.com

DRAWN BY: LFV/PF
CHKD. BY: AJR
PROJ. NO.: 1930039-000.56
DWG. NO.: 12179W

PLAT NO. 80-11-50