

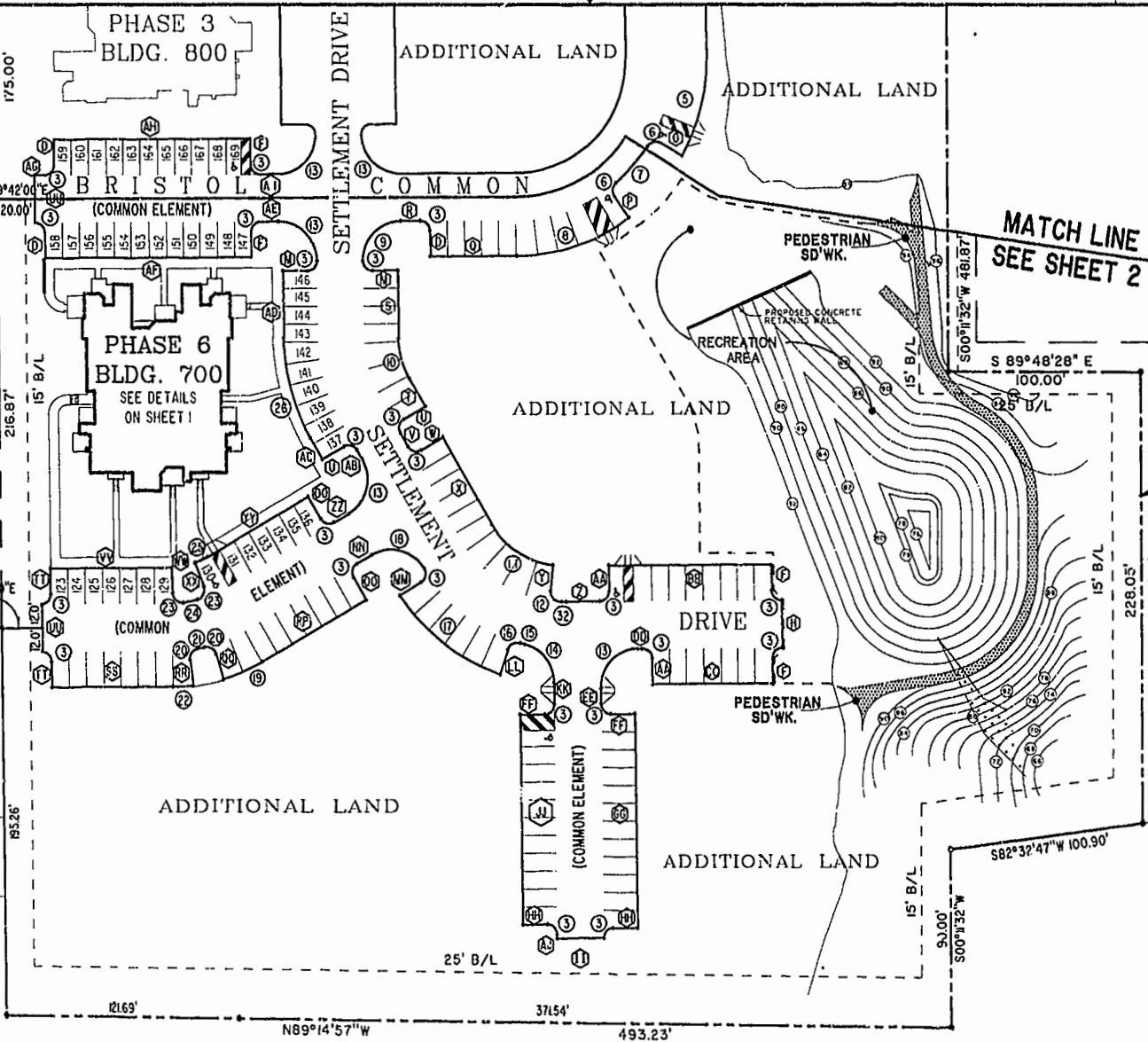
T.P. 372--(0A)--00-030
 NOW OR FORMERLY
JEROME & EVELYN RANDOLPH
 (D.B. 37, PG. 379)
 ZONE: RM-2

MATCH LINE
 SEE SHEET 2

T.P. 372--(0A)--00-004
 NOW OR FORMERLY
CECIL AND ALICE M. CROPPER
 (D.B. 48, PG. 546)
 ZONE: RM-2

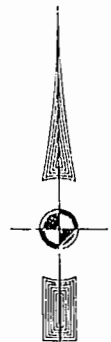
T.P. 372--(0A)--00-003
 NOW OR FORMERLY
LEONARD & BEATRICE LEGUM
 (D.B. 55, PG. 114)
 ZONE: RM-2

T.P. 402-01-00A
 NOW OR FORMERLY
LULA LORRAINE OLIVER
 (D.B. 83, PG. 360)
 ZONE: RM-2



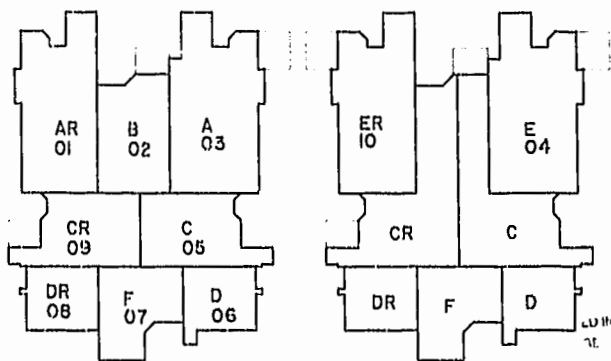
T.P. 372--(05)--00-001
 NOW OR FORMERLY
CHESAPEAKE MEDIA, INC.
 (D.B. 74, PG. 121)
 (M.B. 42, PG. 25)
 ZONE: B-2 CONDITIONAL

15' LOADING DOCK SETBACK
 D.B. 59 - PG. 2-3
 P.B. 42 - PG. 25



(FIRST FLOOR)

(SECOND FLOOR)



TYPICAL CONDOMINIUM LAYOUT

T.P. 372--(04)--00-00-A2
 NOW OR FORMERLY
CITY OF WILLIAMSBURG
 (D.B. 121, PG. 321)
 (M.B. 36, PG. 77)

PLAT RECORDED IN
 P.B. NO. 80 PAGE 37-42

Williamsburg/James City County
 10:32 AM
 Recorded 14 day of February 2001
 DOCUMENT # 010184
 City of Williamsburg Clerk
 Betsy S. Woolridge, Clerk of Circuit Court



BRISTOL COMMONS
 A CONDOMINIUM COMMUNITY
 PHASE SIX
 FOR
KEY GROUP, LLC
 CITY OF WILLIAMSBURG, VIRGINIA

Hassell & Folkes, P.C. Engineers Surveyors Planners Chesapeake, VA 23320 (757)547-9531	SIZE C	CONTRACT NO 98062	DISK/BOX 1230/15	FILENAME BRISTOL6.DWG	REV. 1
SCALE: 1" = 50'		DATE: 02/01/01	SHEET 3 of 4		