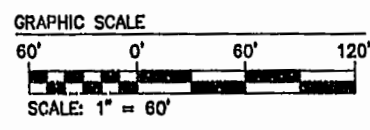
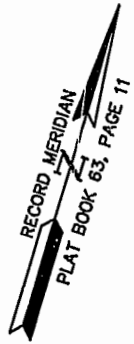
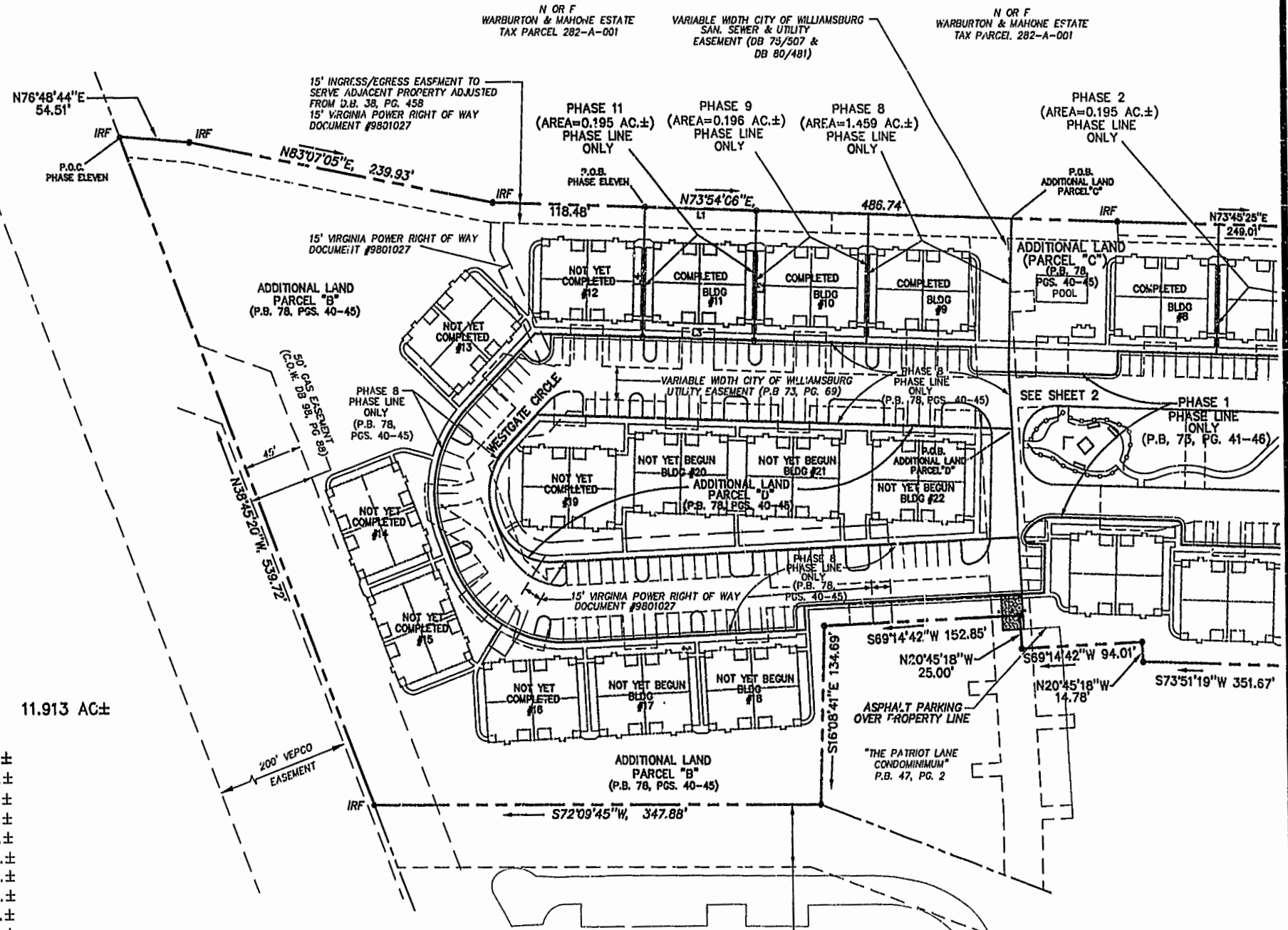


NOTE:
 AT THE TIME OF THIS SURVEY
 ROADS AND SIDEWALK ARE UNDER
 CONSTRUCTION. (PROPOSED
 LOCATION SHOWN). WATER &
 & SANITARY SYSTEM ARE IN PLACE.



AREA	
TOTAL AREA PARCEL 1=	11.913 AC±
PHASE ELEVEN=	0.195 AC.±
PHASE TEN=	0.222 AC.±
PHASE NINE=	0.196 AC.±
PHASE EIGHT=	1.459 AC.±
PHASE SEVEN=	0.216 AC.±
PHASE SIX=	0.343 AC.±
PHASE FIVE=	0.235 AC.±
PHASE FOUR=	0.200 AC.±
PHASE THREE=	0.196 AC.±
PHASE TWO=	0.195 AC.±
PHASE ONE=	3.355 AC.±
ADDITIONAL AREA (PARCEL "B")=	3.812 AC.±
ADDITIONAL AREA (PARCEL "C")=	0.396 AC.±
ADDITIONAL AREA (PARCEL "D")=	0.893 AC.±
TOTAL=	11.913 AC±



PHASE ELEVEN LINE TABLE

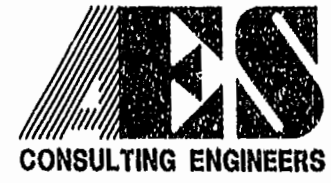
NUMBER	BEARING	DISTANCE
L1	N73°54'06\"E	87.00'
L2	S16°08'41\"W	97.77'
L3	S73°01'19\"W	87.00'
L4	N16°08'41\"W	97.84'

Williamsburg/James City County
 2:19 pm day of February 2001
 DOCUMENT # 010177
 [Signature] Clerk

30' CITY OF WILLIAMSBURG
 SAN. SEWER & UTILITY
 EASEMENT (DB 75/507 &
 DB 80/481)

"THE PATRIOT LANE
 CONDOMINIUM"
 TAX PARCEL 281-01-02-A
 P.B. 35, PG. 119

PLAT RECORDED IN
 P.B. NO. 80, PAGE 30-35



5248 Old Towne Road, Suite 1
 Williamsburg, Virginia 23188
 (757) 253-0040
 Fax (757) 220-8994

PLAT OF CONDOMINIUM
 WESTGATE AT WILLIAMSBURG,
 A CONDOMINIUM
 PHASE ELEVEN
 OWNED BY: 752 L.L.C.,
 A VIRGINIA LIMITED LIABILITY COMPANY
 CITY OF WILLIAMSBURG VIRGINIA



No.	DATE	REVISION / COMMENT / NOTE	BY

Designed GTW/ADS	Drawn JFS
Scale 1" = 60'	Date 1/11/01
Project No. 8395-6	
Drawing No. 3 OF 6	

01-24-01-09-46 8395P113.DWG JFS