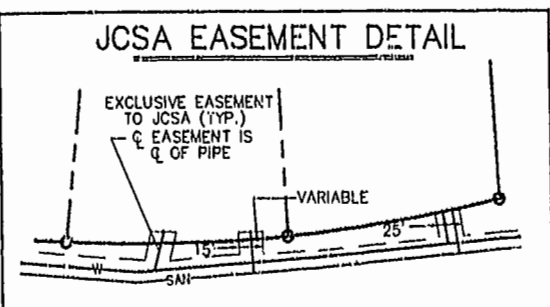
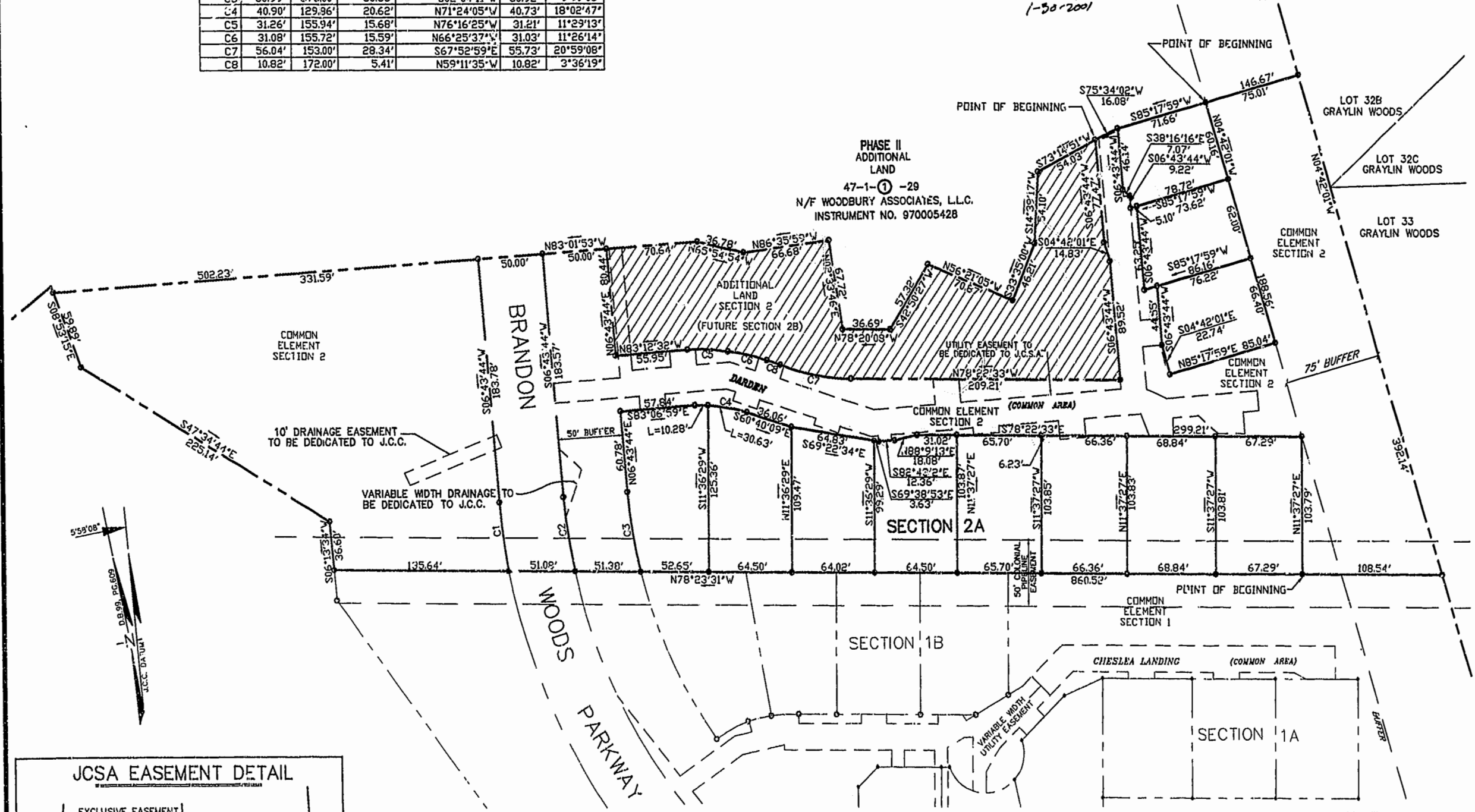


CONDOMINIUM PLAT
OF
SECTION 2A
(A PORTION OF SECTION 2, PHASE II)
BRANDON WOODS
JAMES CITY COUNTY, VIRGINIA
SCALE: 1"=50' DATE: 1/23/01



SHEET 2 OF 4

CURVE TABLE						
CURVE	LENGTH	RADIUS	TANGENT	CHORD DIRECTION	CHORD	DELTA
C1	52.11'	475.00'	26.08'	S03°35'10"W	52.08'	6°17'08"
C2	56.52'	425.00'	28.30'	S02°55'10"W	56.47'	7°3'10"
C3	60.99'	375.00'	30.56'	S02°04'11"W	60.92'	9°19'06"
C4	40.90'	129.96'	20.62'	N71°24'05"W	40.73'	18°02'47"
C5	31.26'	155.94'	15.68'	N76°16'25"W	31.21'	11°29'13"
C6	31.08'	155.72'	15.59'	N66°25'37"W	31.03'	11°26'14"
C7	56.04'	153.00'	28.34'	S67°52'59"E	55.73'	20°59'08"
C8	10.82'	172.00'	5.41'	N59°11'35"W	10.82'	3°36'19"



NOTE: JCSA UTILITY EASEMENT SHOWN ON THIS PLAT IS GRAPHIC ONLY. LOCATION OF EASEMENT SHALL BE BASED ON ACTUAL FIELD LOCATION OF PIPES.

Williamsburg/James City County
12:15 pm
February 2, 2001
DOCUMENT # 010001754
Douglas E. White

PLAT RECORD # 2-25
P.D. NO. 80-22-25

LANDMARK DESIGN GROUP
Engineers Planners Surveyors
Landscape Architects Environmental Consultants
4029 IRONBOUND ROAD, SUITE 100
WILLIAMSBURG, VA 23188
TEL (757)253-2975 FAX (757)229-0049

DRAWN BY: LFV
CHKD BY: DEW
PROJ. NO.: 1980074-000.56
DWG. NO.: 122254