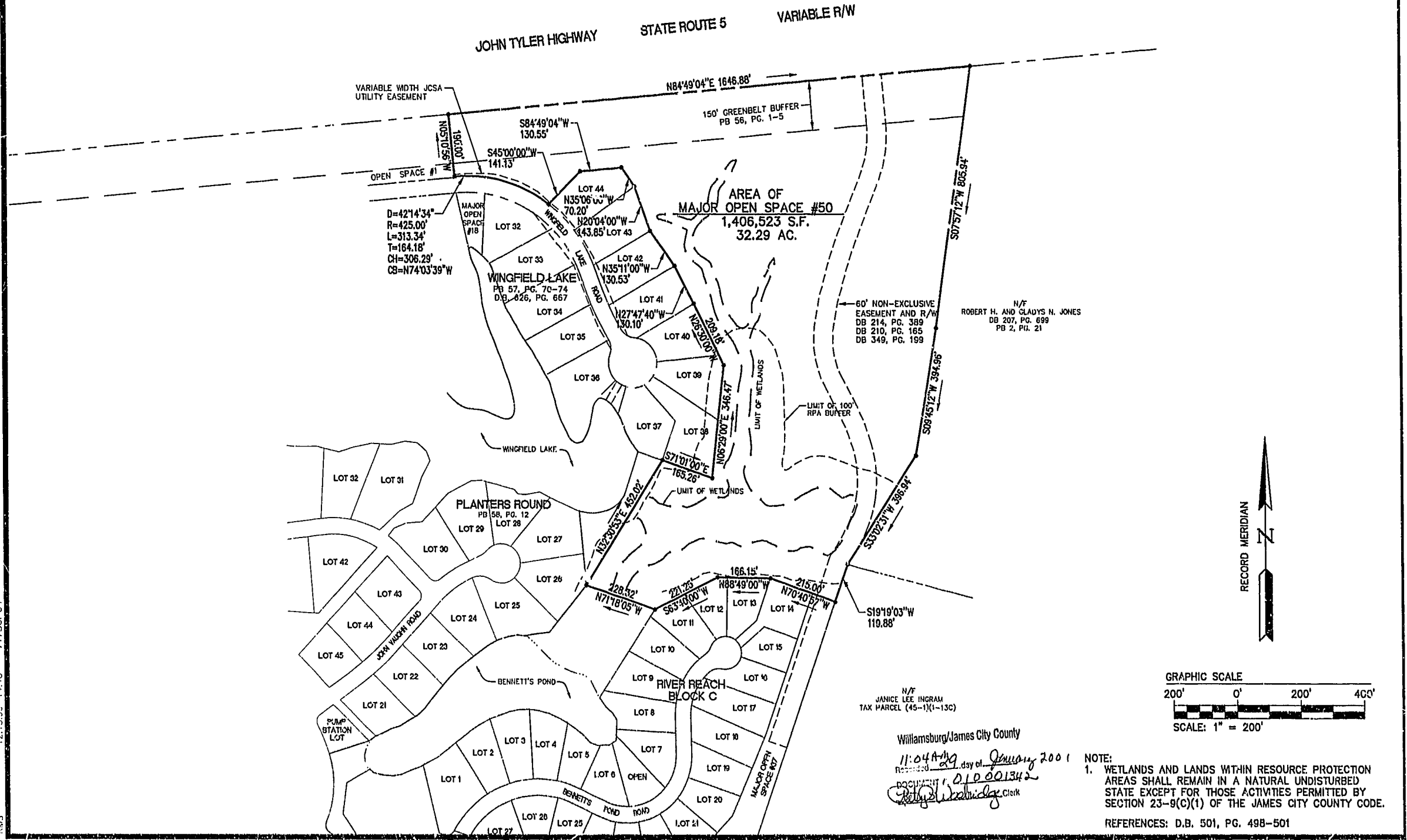
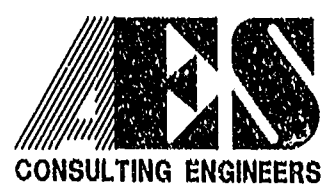


150-FOOT GREENBELT BUFFER ALONG THE PROPERTY'S ROUTE 5 FRONTAGE IS DEFINED BY THE GREENBELT CORRIDOR POLICY OF JAMES CITY COUNTY. THE "GREENBELT" BUFFERS SHALL BE UNDISTURBED AND EXCLUSIVE OF ANY LOTS, EXCEPT FOR APPROVED UTILITIES, DRAINAGE IMPROVEMENTS, JOGGING/NATURE TRAILS, COMMUNITY ENTRANCE ROADS AS SHOWN GENERALLY ON THE MASTER PLAN AND APPROPRIATE HISTORICAL, ENVIRONMENTAL, DIRECTIONAL, AND COMMUNITY IDENTIFICATION SIGNAGE AS APPROVED BY THE PLANNING COMMISSION.



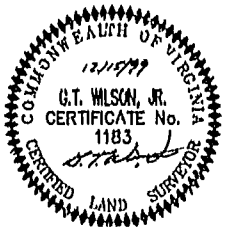
Williamsburg/James City County
 11:04 AM day of January 2001
 DOCUMENT 010 001342
 [Signature]

NOTE:
 1. WETLANDS AND LANDS WITHIN RESOURCE PROTECTION AREAS SHALL REMAIN IN A NATURAL UNDISTURBED STATE EXCEPT FOR THOSE ACTIVITIES PERMITTED BY SECTION 23-9(C)(1) OF THE JAMES CITY COUNTY CODE.
 REFERENCES: D.B. 501, PG. 498-501



5248 Olde Towne Road, Suite 1
 Williamsburg, Virginia 23188
 (757) 253-0040
 Fax (757) 220-8994

COMPOSITE PLAT SHOWING MAJOR OPEN SPACE #50
 TO BE CONVEYED TO
 GOVERNOR'S LAND FOUNDATION
 THE
 GOVERNOR'S LAND
 At Two Rivers
 JAMES CITY COUNTY
 VIRGINIA



No.	DATE	REVISION / COMMENT / NOTE	JY

Designed	Drawn
VMB	RMS
Scale	Date
1" = 200'	12/15/99
Project No.	
7173	
Drawing No.	
4 OF 4	

12.13.99-14:48 71730P04 RMS