

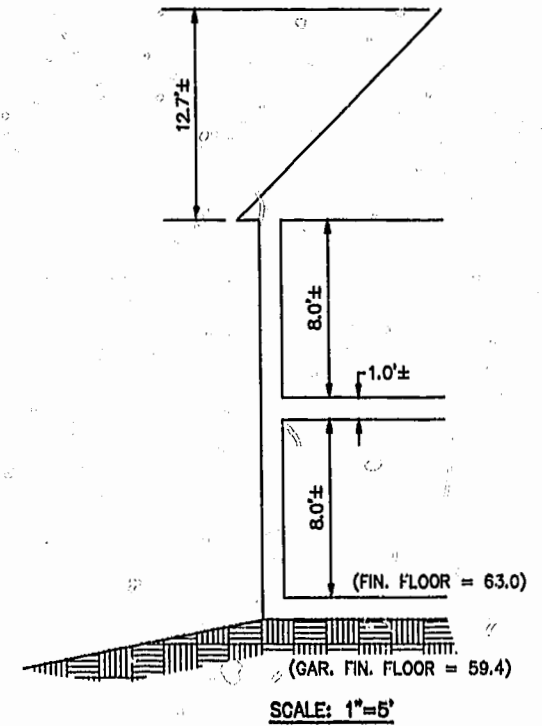
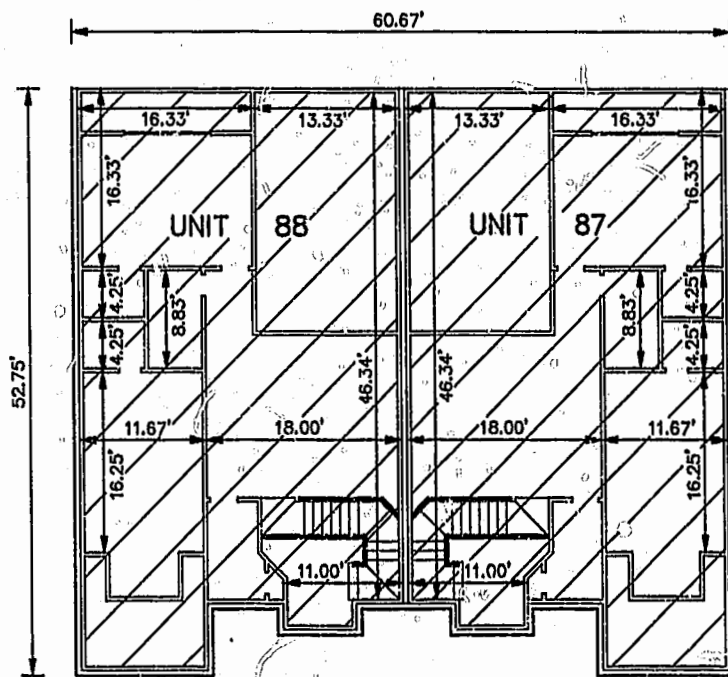
EXHIBIT B-5  
 SUPPLEMENTAL CONDOMINIUM PLAN  
 OF  
**WYNDHAM PLANTATION**  
 CONDOMINIUM  
 WILLIAMSBURG, VIRGINIA  
 SCALE: 1"=10' JANUARY 23, 2001  
**JOHN E. SIRINE AND ASSOCIATES, LTD.**  
 SURVEYORS • ENGINEERS • PLANNERS  
 VIRGINIA BEACH, VIRGINIA  
 (757) 486-4910

NOTES:

1. BUILDING DIMENSIONS SHOWN HEREON ARE INTERIOR DIMENSIONS. THESE DIMENSIONS ARE IN FEET AND WERE TAKEN FROM PLANS SUPPLIED ENTITLED "WYNDHAM PLANTATION AT WILLIAMSBURG, FLOOR PLANS" BY PROGRESSIVE DESIGNS DATED 11/19/98.
2. INTERIOR UNIT CONFIGURATIONS AND PARTITIONS AS DEPICTED HEREON ARE FOR THE PURPOSE OF ILLUSTRATION ONLY AND MAY NOT REPRESENT THE INTERIOR OF A UNIT AS ACTUALLY CONSTRUCTED.

**SECOND FLOOR - BUILDING 14**

SCALE: 1"=10'



UNIT AREA

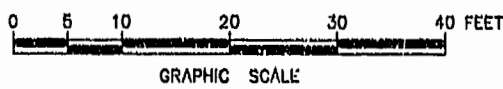
PHASE	UNIT No.	UNIT ADDRESS	UNIT AREA
6	87	341 ZELKOVA ROAD	1,957 S.F.
6	88	345 ZELKOVA ROAD	1,957 S.F.

THE UNDERSIGNED CERTIFIES THAT THESE PLANS ARE ACCURATE AND COMPLY WITH THE PROVISIONS OF CODE OF VIRGINIA, SECTION 55-79.58.B AND THAT ALL UNITS OR PORTIONS THEREOF DEPICTED HEREON AND ALL COMMON ELEMENTS HAVE BEEN SUBSTANTIALLY COMPLETED.

Williamsburg/James City County SIGNED: Jeffrey D. Williams  
 JEFFREY D. WILLIAMS, L.S.

11:20 AM  
 Recorded 25 day of January 2001  
 Document # 010086

*By Claudia A. Binkholz, Clerk*



PLAT RECORDED IN  
 P.D. NO. 80 PAGE 6-11