

EXHIBIT B-5  
 SUPPLEMENTAL CONDOMINIUM PLAN  
 OF  
 WYNDHAM PLANTATION  
 CONDOMINIUM

WILLIAMSBURG, VIRGINIA  
 SCALE: 1"=10' JANUARY 23, 2001

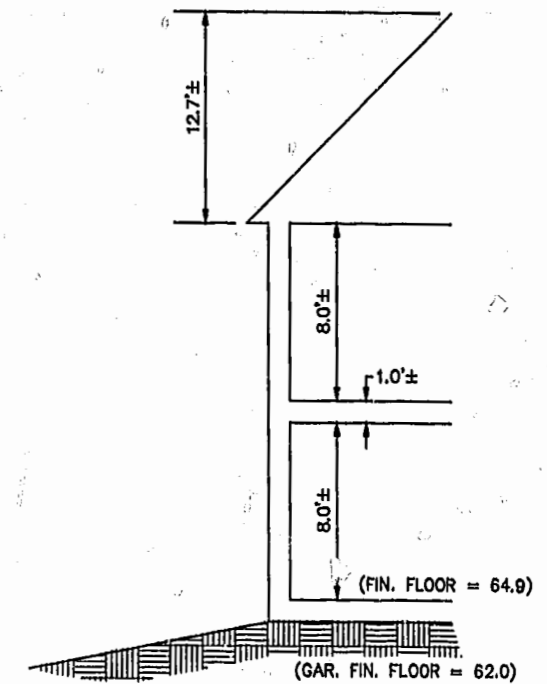
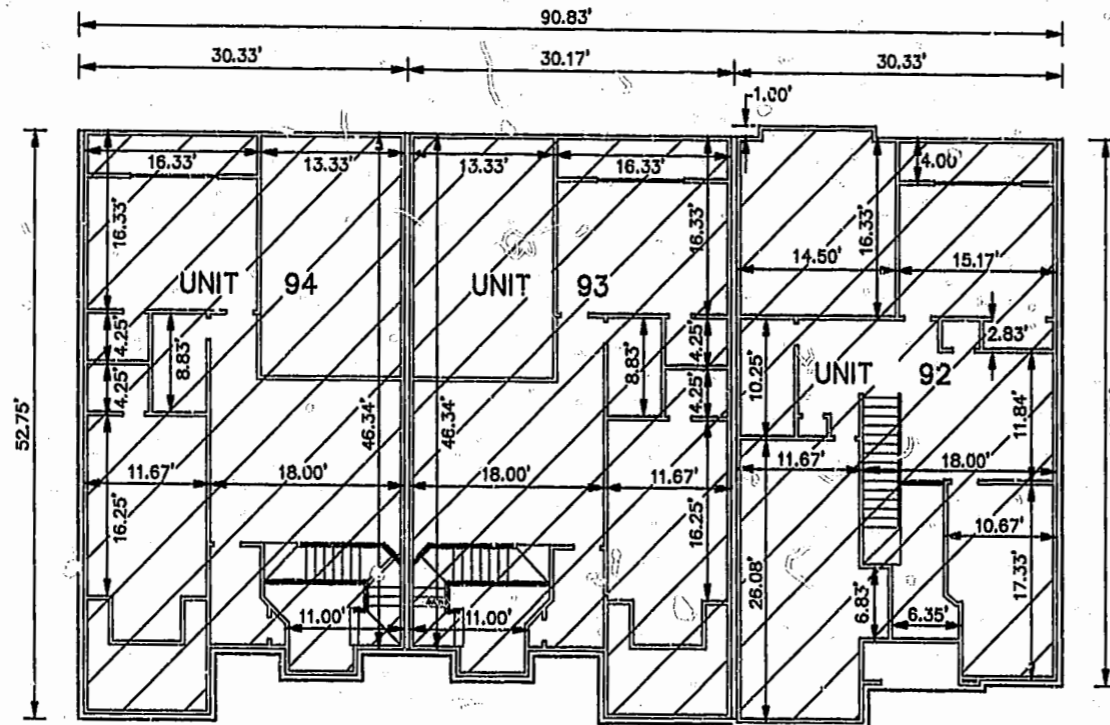
JOHN E. SIRINE AND ASSOCIATES, LTD.  
 SURVEYORS • ENGINEERS • PLANNERS  
 VIRGINIA BEACH, VIRGINIA  
 (757) 486-4910

NOTES:

1. BUILDING DIMENSIONS SHOWN HEREON ARE INTERIOR DIMENSIONS. THESE DIMENSIONS ARE IN FEET AND WERE TAKEN FROM PLANS SUPPLIED ENTITLED "WYNDHAM PLANTATION AT WILLIAMSBURG, FLOOR PLANS" BY PROGRESSIVE DESIGNS DATED 11/19/98.
2. INTERIOR UNIT CONFIGURATIONS AND PARTITIONS AS DEPICTED HEREON ARE FOR THE PURPOSE OF ILLUSTRATION ONLY AND MAY NOT REPRESENT THE INTERIOR OF A UNIT AS ACTUALLY CONSTRUCTED.

SECOND FLOOR -- BUILDING 16

SCALE: 1"=10'



SCALE: 1"=5'

UNIT AREA

PHASE	UNIT No.	UNIT ADDRESS	UNIT AREA
6	92	412 ZELKOVA ROAD	1,997 S.F.
6	93	416 ZELKOVA ROAD	2,101 S.F.
6	94	420 ZELKOVA ROAD	2,101 S.F.

THE UNDERSIGNED CERTIFIES THAT THESE PLANS ARE ACCURATE AND COMPLY WITH THE PROVISIONS OF CODE OF VIRGINIA, SECTION 55-79.58.B AND THAT ALL UNITS OR PORTIONS THEREOF DEPICTED HEREON AND ALL COMMON ELEMENTS HAVE BEEN SUBSTANTIALLY COMPLETED.

Williamsburg/James City County

SIGNED:

JEFFREY D. WILLIAMS

JEFFREY D. WILLIAMS, L.S.

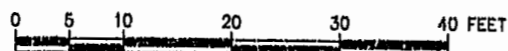
11:20 AM 25 day of January 2001

Recorded

DOCUMENT # 21006

By *Clinton H. ...* Clerk

*by Clinton H. ...*



GRAPHIC SCALE

PLAT RECORDED IN  
 P.L. NO. 80, PAGE 6-11