

EXHIBIT B-5  
 SUPPLEMENTAL CONDOMINIUM PLAN  
 OF  
 WYNDHAM PLANTATION  
 CONDOMINIUM

WILLIAMSBURG, VIRGINIA  
 SCALE: 1"=100' JANUARY 23, 2001

JOHN E. SIRINE AND ASSOCIATES, LTD.  
 SURVEYORS • ENGINEERS • PLANNERS  
 VIRGINIA BEACH, VIRGINIA  
 (757) 486-4910

THE UNDERSIGNED CERTIFIES THAT THESE PLATS ARE ACCURATE AND COMPLY WITH THE PROVISIONS OF CODE OF VIRGINIA, SECTION 55-79.53.A AND THAT ALL UNITS OR PORTIONS THEREOF DEPICTED HEREON AND ALL COMMON ELEMENTS HAVE BEEN SUBSTANTIALLY COMPLETED.

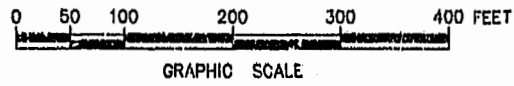
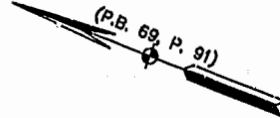
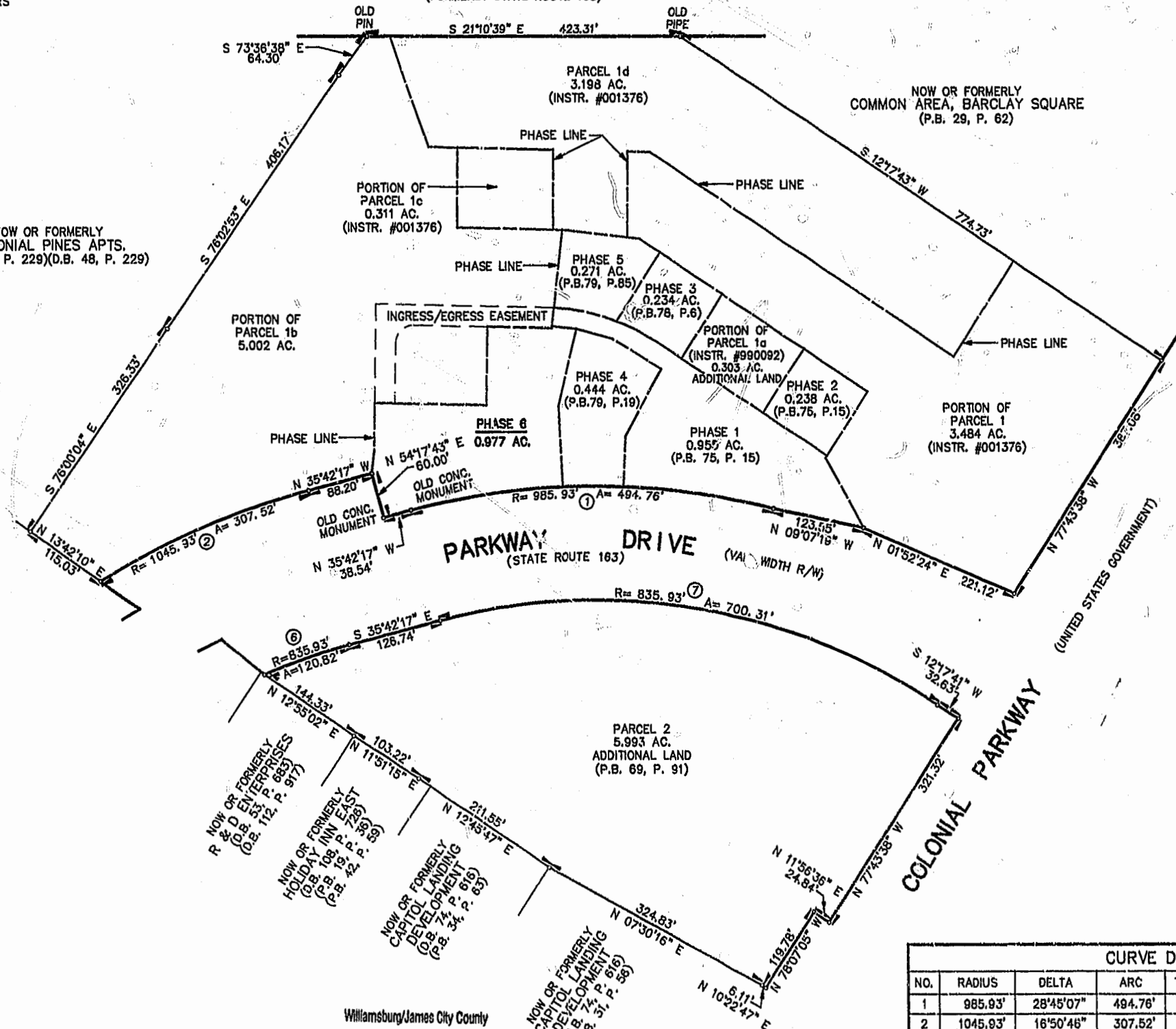
SIGNED: Jeffrey D. Williams  
 JEFFREY D. WILLIAMS, L.S.



**MERRIMAC TRAIL**  
 (STATE ROUTE 143)  
 (FORMERLY STATE ROUTE 168)

NOW OR FORMERLY  
 COLONIAL PINES APTS.  
 (D.B. 44, P. 229)(D.B. 48, P. 229)

NOW OR FORMERLY  
 COMMON AREA, BARCLAY SQUARE  
 (P.B. 29, P. 62)



PLAT RECORDED IN  
 P.B. NO. 80 PAGE 6-11

Williamsburg/James City County  
 11:20 AM  
 Recorded 25 day of January 2001  
 DOCUMENT # 010086  
 By Richard A. Winkler, Clerk  
 By Charles A. Smith, Rep. Clerk

CURVE DATA						
NO.	RADIUS	DELTA	ARC	TANGENT	CHORD	CHORD BEARING
1	985.93'	28°45'07"	494.76'	252.70'	489.58'	N 21°19'43" W
2	1045.93'	16°50'46"	307.52'	154.88'	306.42'	N 44°07'40" W
6	835.93'	08°16'51"	120.82'	60.51'	120.71'	S 39°50'42" E
7	835.93'	48°00'00"	700.31'	372.18'	680.01'	S 11°42'18" E