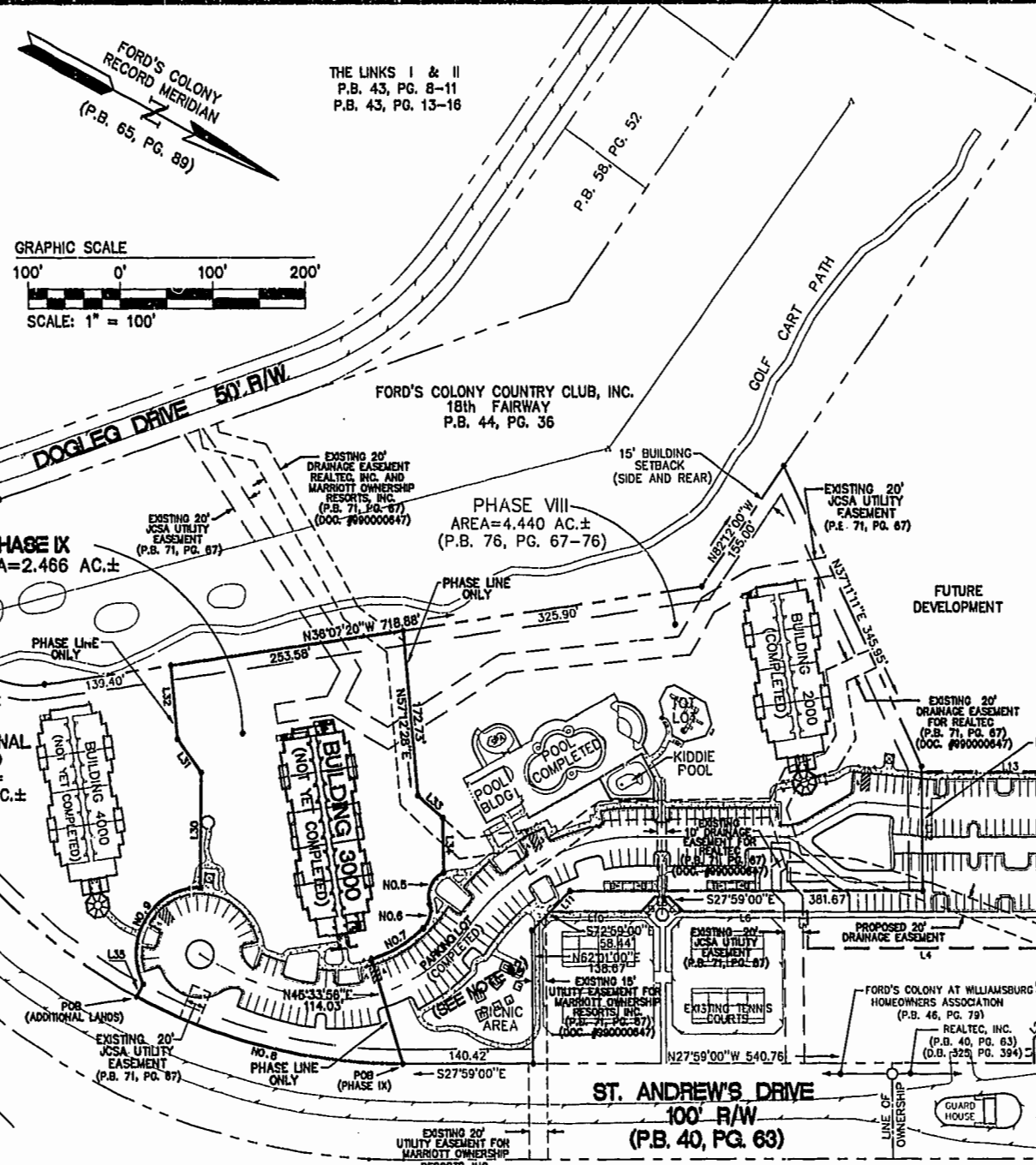
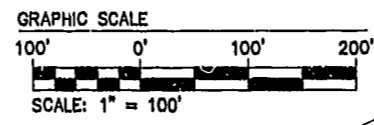


LOCATION MAP 1" = 4000'



THE LINKS I & II
P.B. 43, PG. 8-11
P.B. 43, PG. 13-16



SURVEYOR'S CERTIFICATE
THE UNDERSIGNED, A LICENSED LAND SURVEYOR, DOES HEREBY CERTIFY THAT THIS PLAT IS ACCURATE AND COMPLIES WITH THE PROVISIONS OF VA. CODE ANN. SUBSECTIONS 55-79.58 A, C AND F. ALL UNITS DEPICTED HEREON, AND IDENTIFIED AS PHASE IX, ARE NOT YET COMPLETED; IT BEING UNDERSTOOD THAT SUCH UNITS ARE BEING SUBJECTED TO A TIME-SHARE INSTRUMENT PURSUANT TO VA. CODE ANN. SECTION 55-367 AND THUS VA. CODE ANN. SUBSECTION 55-79.58 D APPLIES.
C. D. Sebert 7/11/00
A. D. SEBERT, L.S. DATE

CE- COMMON ELEMENTS
COMMON ELEMENTS INCLUDE ALL PORTIONS OF THE CONDOMINIUM OTHER THAN THE UNITS SHOWN AND DESIGNATED. HEREON AND DEFINED IN THE CONDOMINIUM DOCUMENTS AND THE LIMITED COMMON ELEMENTS. EXAMPLES OF COMMON ELEMENTS ARE: PARKING, PAVED AREAS, THE GROUNDS (WHETHER OR NOT LANDSCAPED), ALL PORTIONS OF THE BUILDINGS NOT A PART OF THE UNIT NOR DEFINED AS LIMITED COMMON ELEMENTS, AND ALL CONDUITS, INSTALLATIONS, WIRES, PIPES, EQUIPMENT, ETC. WHICH SERVE OTHER COMMON ELEMENTS OR WHICH SERVE MORE THAN ONE UNIT.

LCE- LIMITED COMMON ELEMENTS
EXCEPT AS MAY BE OTHERWISE EXPRESSLY PROVIDED, LIMITED COMMON ELEMENTS INCLUDE DOORS, WINDOWS, PORCHES, BALCONIES, AND ANY OTHER APPARATUS DESIGNED TO SERVE A SINGLE UNIT, BUT LOCATED OUTSIDE THE BOUNDARIES THEREOF.

PARCEL A
REALTEC INCORPORATED
AREA = 1,424,955 S.F.±
32.7124 ACRES±
(P.B. 65, PG. 89)
DOCUMENT #990000642
TAX PARCEL (31-3)(1-53)

FORD'S COLONY DRIVE (VARIABLE WIDTH R/W)
(P.B. 40, PG. 63, P.B. 31, PG. 65-6A)

FAIRWAY #2
P.B. 44, PG. 36

- NOTES:**
- (1) AT THE TIME OF THIS SURVEY THE CURB IS IN PLACE, THE PARKING LOT IS PAVED AND THE CONSTRUCTION OF THE SIDEWALKS ARE COMPLETE. WATER AND SEWER SYSTEMS ARE IN PLACE.
 - (2) CONSTRUCTION OF THE PICNIC AREA HAS NOT YET BEGUN.
 - (3) THE PROPERTY IS ZONED R4.
 - (4) PHASE VIII, IX AND THE ADDITIONAL LAND AS SHOWN COMPRISE ALL OF JAMES CITY COUNTY TAX PARCEL (31-4) (1-18) AND IS ALSO KNOWN AS PARCEL "B" PER P.B. 65, PG. 89.

PARKING TABULATION

(INCLUDES ONLY SPACES LYING ENTIRELY ON PHASE VIII, IX AND ADDITIONAL LAND)

PHASE VIII	83 SPACES (INCLUDING 4 HANDICAPPED)
PHASE IX	34 SPACES (INCLUDING 2 HANDICAPPED)
TOTAL	117 SPACES (INCLUDING 6 HANDICAPPED)

AREA TABULATION

PHASE IX	2.466 AC.±
PHASE VIII	4.440 AC.±
ADDITIONAL LAND	2.135 AC.±
TOTAL AREA	9.041 AC.±

LINE TABLE (PHASE IX)

NUMBER	BEARING	DISTANCE
L30	S82°55'24"W	120.20'
L31	S28°09'40"W	43.28'
L32	S57°12'28"W	78.91'
L33	N14°17'32"E	35.00'
L34	N61°50'06"E	57.22'
L35	S89°36'56"W	15.00'

CURVE TABLE (PHASE IX)

NUMBER	DELTA	RADIUS	LENGTH	TANGENT	CHORD	CH. BEAR.
NO.5	79°48'33"	28.00	39.00	23.42	35.92	N86°18'10"E
NO.6	62°21'24"	25.00	27.21	16.13	25.89	N77°34'36"E
NO.7	28°48'05"	139.37	85.19	33.21	64.80	S57°50'07"E
NO.8	27°35'58"	818.23	287.79	161.85	294.93	S14°11'02"E
NO.9	117°32'19"	69.50	142.67	114.62	118.86	N85°50'46"W

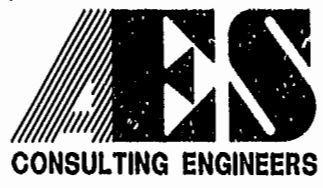
CURVE TABLE (ADDITIONAL LAND)

NUMBER	DELTA	RADIUS	LENGTH	TANGENT	CHORD	CH. BEAR.
No.1	48°02'04"	618.23	518.30	275.48	503.25	S23°37'58"W
No.2	01°53'57"	1250.00	41.43	20.72	41.43	S46°42'03"W
No.3	67°46'06"	25.00	38.30	24.05	34.66	S89°38'05"W
No.4	169°38'33"	100.00	298.08	1103.35	199.18	N48°41'56"E

LINE TABLE FOR ACCESS EASEMENT (DOCUMENT #990000646)

NUMBER	BEARING	DISTANCE
L1	S82°01'00"W	25.36'
L2	N72°59'00"W	18.92'
L3	S62°01'00"W	81.26'
L4	S27°59'00"E	256.13'
L5	S62°01'00"W	38.57'
L6	S27°59'00"E	134.21'
L7	S17°01'00"W	21.53'
L8	S27°59'00"E	15.00'
L9	S27°59'00"E	21.53'
L10	S27°59'00"E	98.52'
L11	N72°59'00"W	30.40'
L12	S62°01'00"W	124.18'
L13	N27°59'00"W	169.56'

L14	N62°01'00"E	22.18'
L15	N27°59'00"W	36.44'
L16	N62°01'00"E	13.24'
L17	N27°59'00"W	8.66'
L18	N62°01'00"E	11.00'
L19	N27°59'00"W	8.66'
L20	S62°01'00"E	26.54'
L21	N27°59'00"W	24.00'
L22	N62°01'00"E	25.00'
L23	S27°59'00"E	14.00'
L24	N62°01'00"E	155.93'
L25	N27°59'00"W	36.64'
L26	N62°01'00"E	10.06'
L27	N17°01'00"E	21.02'
L28	N62°01'00"E	21.52'
L29	S27°59'00"E	86.44'



5248 Olde Towne Road, Suite 1
Williamsburg, Virginia 23188
(757) 253-0040
Fax (757) 220-8994

EXHIBIT A-2
PLAT OF CONDOMINIUM MANOR CLUB AT FORD'S COLONY PHASE IX
PLAT RECORDED IN P.B. NO. 79 PAGE 22-101
OWNER/DEVELOPER: MARRIOTT OWNERSHIP RESORTS, INC.
POWHTAN DISTRICT JAMES CITY COUNTY VIRGINIA



Williamsburg/James City County

No.	DATE	REVISION / COMMENT / NOTE	BY

Designed ADS	Drawn JFS
Scale 1"=100'	Date 7/11/00
Project No. 7739-11	
Drawing No. 1 OF 10	