

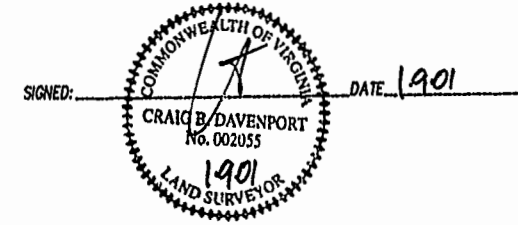
EXHIBIT B-4
SUPPLEMENTAL CONDOMINIUM PLATS
OF
WYNDHAM PLANTATION
CONDOMINIUM

WILLIAMSBURG, VIRGINIA

DATE: JANUARY 9, 2001 SCALE: 1"=100'

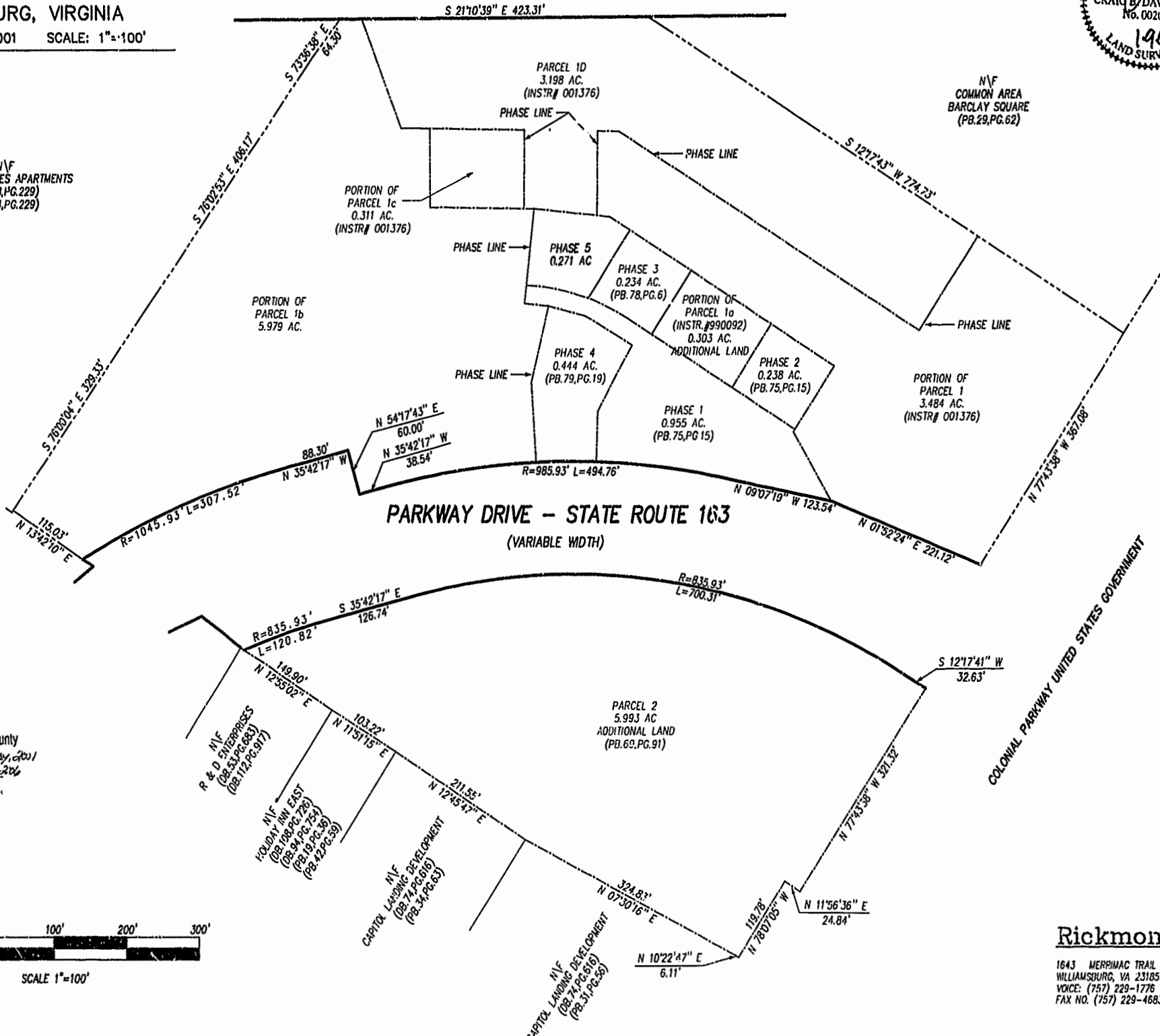
Book 79 Page 85

I HEREBY CERTIFY THAT THIS PLAT IS ACCURATE AND THAT IT COMPLIES WITH SECTION 55-79.58(A) OF THE VIRGINIA CONDOMINIUM ACT AS AMENDED AND THAT ALL UNITS OR PORTIONS THEREOF DEPICTED HEREON HAVE BEEN SUBSTANTIALLY COMPLETED EXCEPT AS OTHERWISE NOTED.

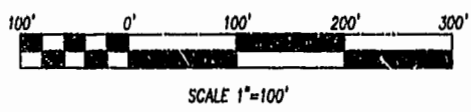


MERRIMAC TRAIL - STATE ROUTE 143
 (FORMERLY STATE ROUTE 168)

N/F
 COLONIAL PINES APARTMENTS
 (OB. 48, PG. 229)
 (OB. 44, PG. 229)



PLAT RECORDED IN
 P.B. NO. 79 PAGE 85-86
 Williamsburg/James City County
 Recorded by City of Williamsburg, VA
 DOCUMENT # 210238
 1/20/01
 [Signature]



Rickmond Engineering, Inc.
 1643 MERRIMAC TRAIL
 WILLIAMSBURG, VA 23185
 VOICE: (757) 229-1776
 FAX NO. (757) 229-4683

ENGINEERING
 SURVEYING
 LAND PLANNING
 www.rickmond.com