

METES & BOUNDS DESCRIPTION

BEGINNING AT THE INTERSECTION OF THE NORTHERN RIGHT-OF-WAY LINE OF RICHMOND ROAD AND THE DIVIDING LINE BETWEEN LAND NOW OR FORMERLY OF THE COLLEGE OF WILLIAM AND MARY IN VIRGINIA AND LAND NOW OR FORMERLY OF ANGUS I. HINES, INC., SAID POINT BEING 708 FEET MORE OR LESS WEST OF THE CENTERLINE OF ARMISTEAD AVENUE, A DRILL HOLE FOUND;

THENCE ALONG THE NORTHERN RIGHT-OF-WAY LINE OF RICHMOND ROAD, NORTH 59°59'07" WEST TO THE LAND NOW OR FORMERLY OF ALBERT M. TABACKMAN AND JOAN FENTON, 183.92 FEET, TO A POINT, AN IRON PIN FOUND;

THENCE DEPARTING THE NORTHERN RIGHT-OF-WAY LINE OF RICHMOND ROAD AND CONTINUING ALONG THE LAND NOW OR FORMERLY OF ALBERT M. TABACKMAN AND JOAN FENTON, NORTH 30°30'05" EAST, TO THE LAND NOW OR FORMERLY OF KING & QUEEN APARTMENTS, L.L.C., 74.40 FEET, TO A POINT, AN IRON PIN FOUND;

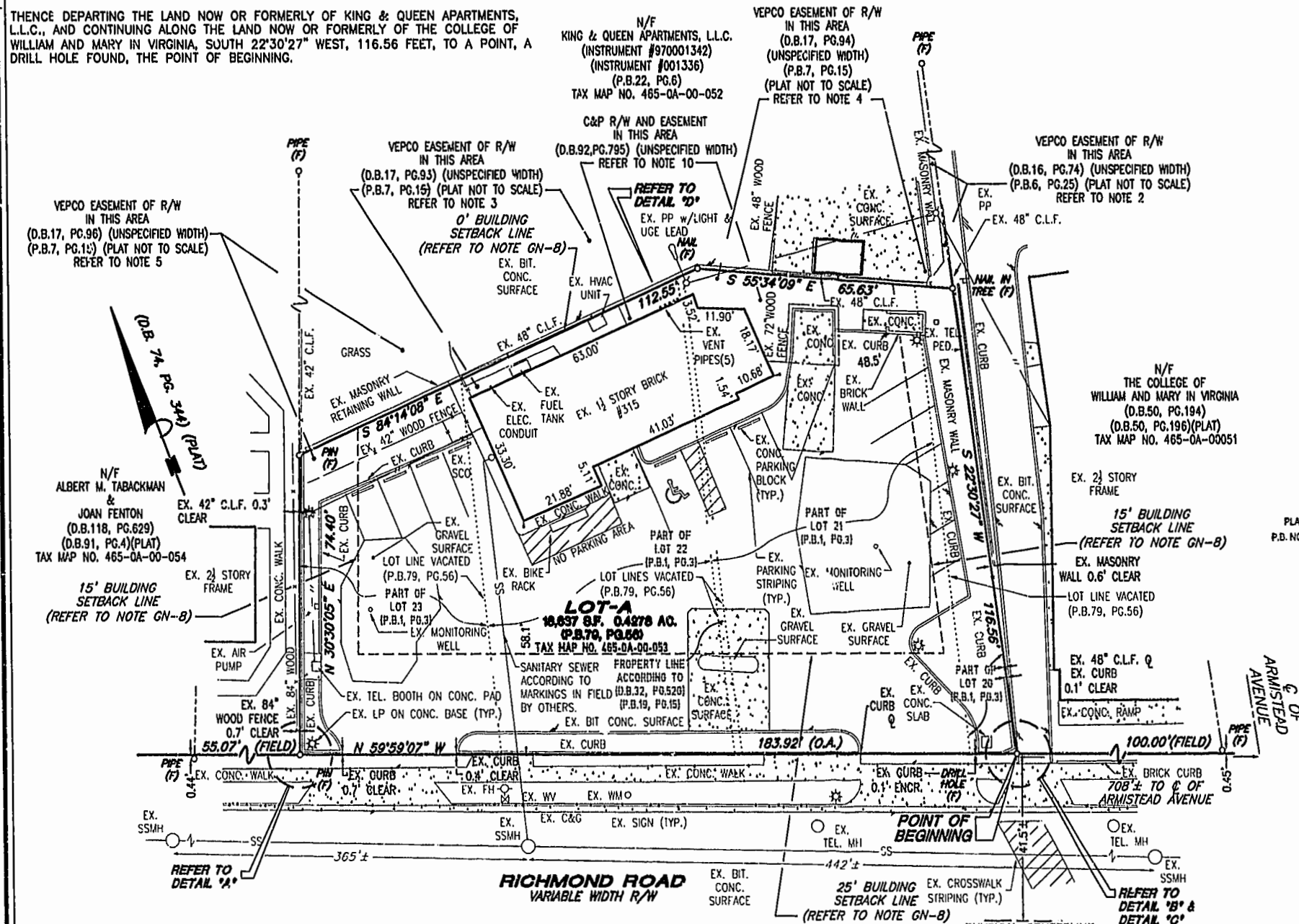
THENCE DEPARTING THE LAND NOW OR FORMERLY OF ALBERT M. TABACKMAN AND JOAN FENTON AND CONTINUING ALONG THE LAND NOW OR FORMERLY OF KING & QUEEN APARTMENTS, L.L.C., SOUTH 34°14'08" EAST, 112.55 FEET TO A POINT, A NAIL FOUND;

THENCE CONTINUING ALONG THE LAND NOW OR FORMERLY OF KING & QUEEN APARTMENTS, L.L.C., SOUTH 55°34'09" EAST, TO THE LAND NOW OR FORMERLY OF THE COLLEGE OF WILLIAM AND MARY IN VIRGINIA, 65.63 FEET, TO A POINT, A NAIL IN A TREE FOUND;

THENCE DEPARTING THE LAND NOW OR FORMERLY OF KING & QUEEN APARTMENTS, L.L.C., AND CONTINUING ALONG THE LAND NOW OR FORMERLY OF THE COLLEGE OF WILLIAM AND MARY IN VIRGINIA, SOUTH 22°30'27" WEST, 116.56 FEET, TO A POINT, A DRILL HOLE FOUND, THE POINT OF BEGINNING.



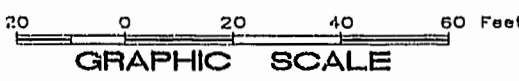
LEGEND		
SYMBOL	ABBREV.	DESCRIPTION
—	AATUR	ANNOTATED ACCORDING TO RECORD
—	AC	ACREAGE
—	BIT.	BITUMINOUS
—	C&G	CURB & GUTTER
—	CATV	UNDERGROUND CABLE TV
—	CL	CENTERLINE
—	CO	CLEAN OUT
—	CONC.	CONCRETE
—	DATR	DIGITIZED ACCORDING TO RECORDS
—	DI	DROP INLET
—	E	UNDERGROUND ELECTRIC LINE
—	EG	EDGE OF GRAVEL
—	EP	EDGE OF PAVEMENT
—	ELEC.	ELECTRIC
—	ENCR.	ENCROACH
—	EMH	ELECTRIC MANHOLE
—	EX.	EXISTING
—	(F)	FOUND MONUMENT
—	FH	FIRE HYDRANT
—	FIELD	FIELD DATA
—	F.O.	UNDERGROUND FIBER OPTIC LINE
—	GAS	UNDERGROUND GAS LINE
—	GUY	GUY WIRE ANCHOR
—	JBOX	JUNCTION BOX
—	LP	LIGHT POLE
—	OHE	OVERHEAD ELECTRIC
—	OHT	OVERHEAD TELEPHONE
—	OHW	OVERHEAD WIRE
—	ON	ON LINE
—	PED.	PEDESTAL
—	PL	PROPERTY LINE
—	PLAT	PLAT DATA
—	PP	POWER POLE
—	R/W	RIGHT-OF-WAY
—	(S)	SET MONUMENT
—	SS	SANITARY SEWER LINE
—	SCO	SEWER CLEAN OUT
—	SD	STORM DRAIN PIPE
—	SDMH	STORM DRAIN MANHOLE
—	S.F.	SQUARE FEET
—	SIGN	SIGN
—	SSMH	SAN. SEWER MANHOLE
—	TRAF.	UNDERGROUND TRAFFIC CONTROL
—	TMH	TELEPHONE MANHOLE
—	TRANS.	TRANSFORMER
—	TEL.	UNDERGROUND TELEPHONE LINE
—	U.P.	UTILITY POLE
—	W	WATER LINE
—	WM	WATER METER
—	WMH	WATER MANHOLE
—	WV	WATER VALVE



TECH: CLS, III/REC
 JOB: 200-0012 DWG: 200-0012S 18X24 ALTA
 REF: 200-0012S ALTA
 FB/P: 737/6, 706/50

REFER TO SHEET 3 OF 3 FOR DETAILS

REFER TO SHEET 1 OF 3 FOR CERTIFICATIONS AND NOTES



Williamsburg/James City County
 1:04 PM 3 day of Jan 2001
 DOCUMENT # 010005
Patricia W. Wadledge Clerk

PLAT RECORDED IN P.B. NO. 75 PAGE 25-77

SHEET 2 OF 3
ALTA/ACSM
LAND TITLE SURVEY
 OF
#315 RICHMOND ROAD
WILLIAMSBURG, VIRGINIA
 FOR
WAWA, INC.,
A NEW JERSEY CORPORATION
 AND
COMMONWEALTH LAND TITLE
INSURANCE COMPANY
COMMITMENT CASE NO. 9901647

REVISED DATE: DECEMBER 12, 2000
 (REVISED PROPERTY LINE AND TITLE INFORMATION)

SCALE: 1"=20' DATE: MAY 4, 2000