

EXHIBIT B-3 SUPPLEMENTAL CONDOMINIUM PLATS OF WYNDHAM PLANTATION CONDOMINIUM

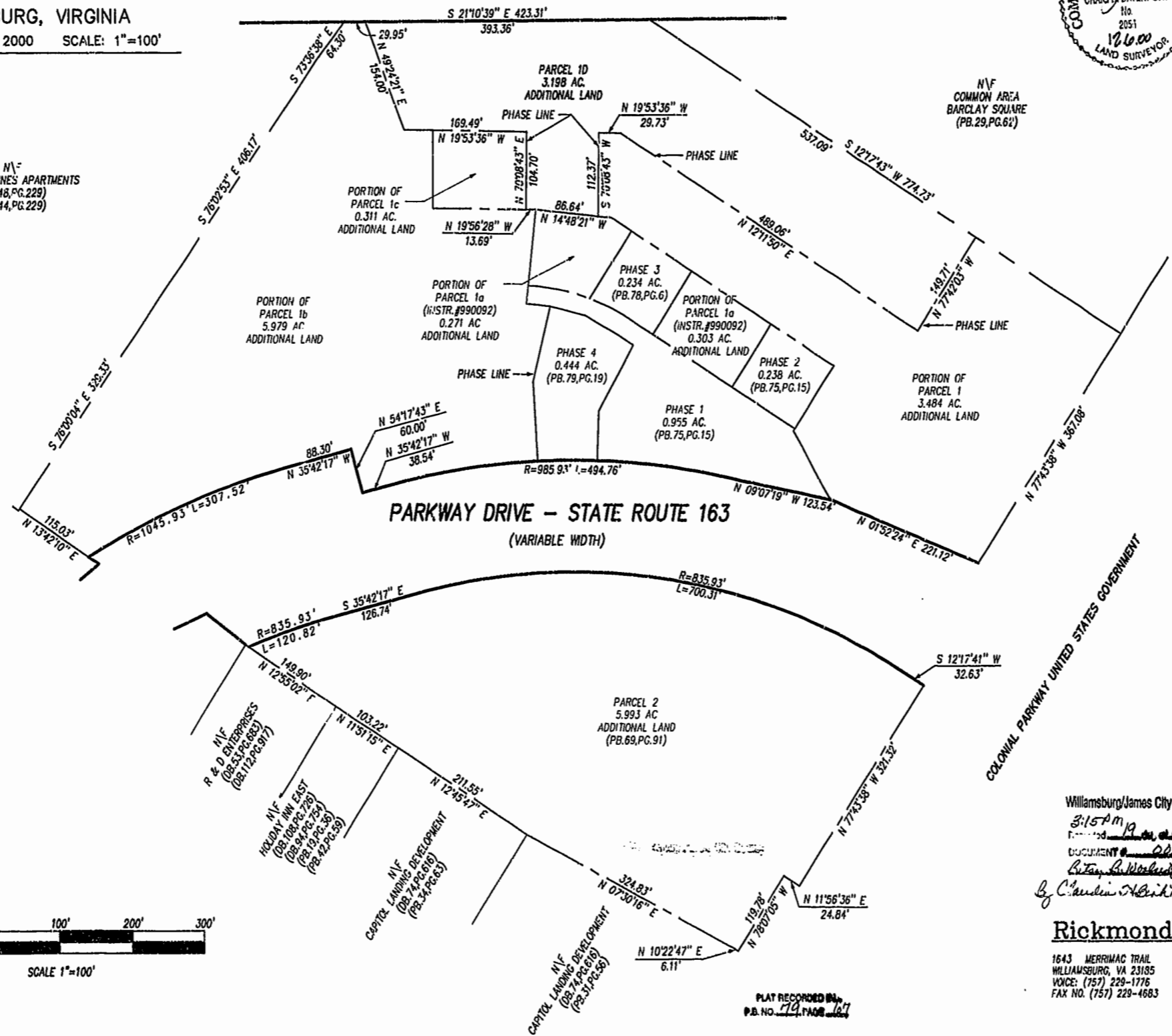
WILLIAMSBURG, VIRGINIA
DATE: DECEMBER 6, 2000 SCALE: 1"=100'

I HEREBY CERTIFY THAT THIS PLAT IS ACCURATE AND THAT IT COMPLIES WITH SECTION 55-79.58(A) OF THE VIRGINIA CONDOMINIUM ACT AS AMENDED AND THAT ALL UNITS OR PORTIONS THEREOF DEPICTED HEREON HAVE BEEN SUBSTANTIALLY COMPLETED EXCEPT AS OTHERWISE NOTED.



SIGNED: _____ DATE: 12/6/00

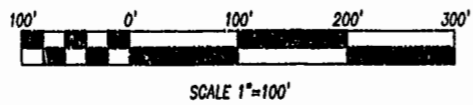
N/V
COLONIAL PINES APARTMENTS
(DB. 48, PG. 229)
(DB. 44, PG. 229)



N/V
COMMON AREA
BARCLAY SQUARE
(PB. 29, PG. 62)

PORTION OF
PARCEL 1
3.484 AC.
ADDITIONAL LAND

COLONIAL PARKWAY UNITED STATES GOVERNMENT



SCALE 1"=100'

Williamsburg/James City County
3:15 PM
Recorded 19 Dec 2000
DOCUMENT # 001376
By *Claudia H. Berkley, Dep. Clerk*

Rickmond Engineering, Inc.

1643 MERRIMAC TRAIL
WILLIAMSBURG, VA 23185
VOICE: (757) 229-1776
FAX NO. (757) 229-4683

ENGINEERING
SURVEYING
LAND PLANNING
www.rickmond.com

PLAT RECORDED IN
P.B. NO. 79 PAGE 67