

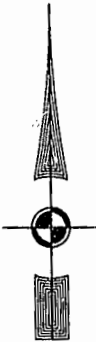
PLAT RECORDED IN
P.B. NO. 79 PAGE 39-37

Williamsburg/James City County

Recorded 13 day of November 2000

DOCUMENT # 000215816 145

Robert H. Kirkbridge Clerk



46-1-01-0-0001
"GREENSPRINGS PLANTATION"
(DB 322, PG 254)

EXIST. 20' JAMES CITY COUNTY SERVICE
AUTHORITY SAN. SEWER EASEMENT AS
SHOWN IN AS-BUILT LOCATION D.B. 141 - PG. 388

EXIST. 20' DRAINAGE EASMT.
M.B. 65 - PG. 2

EXIST. 20' DRAINAGE EASEMENT
M.B. 65 - PG. 2

N 76°40'21" E
20' SANITARY SEWER EASEMENT

N 63°00'24" E
290.13'

COMMON AREA
LIMITS OF 50' PPA

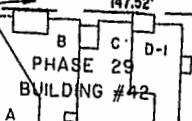
LIMITS OF 100' RMA

EX. 50' COLONIAL PIPELINE EASEMENT (D.B. 90 PG. 1)
COMMON AREA
S88°13'21"E
1025.04'

MATCH LINE
SEE SHEET 4

COMMON AREA

ADDITIONAL LAND



COMMON AREA
BMP LAKE # 1
AREA = 38,052 SQ. FT. =
0.8735 AC.
SEE SHEET 3 FOR DETAIL

MATCH LINE
SEE SHEET 4



SEE SHEETS 4 FOR
LOCATION AND DETAILS
OF PHASE 22, BLDG. #43

EXHIBIT "A" PHASE 14
FAIRWAYS VILLAS
AT
GREENSPRINGS, A CONDOMINIUM
FOR
GREENSPRINGS DEVELOPMENT, L.C.
BERKELEY DISTRICT JAMES CITY COUNTY, VIRGINIA

Hassell & Polkes, P.C. Engineers Surveyors Planners Chesapeake, VA 23320 (757)547-9531	SIZE C	CONTRACT NO. 95-079	DISK/BOX 6A8/16	FILENAME FAIRWY14.DWG	REV.
			REF: 10/13	FWAYPLAT.DWG	
	SCALE: 1" = 50'	DATE: 10/30/00	SHEET 5 of 5		

MATCH LINE - SEE SHEET 3