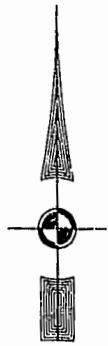
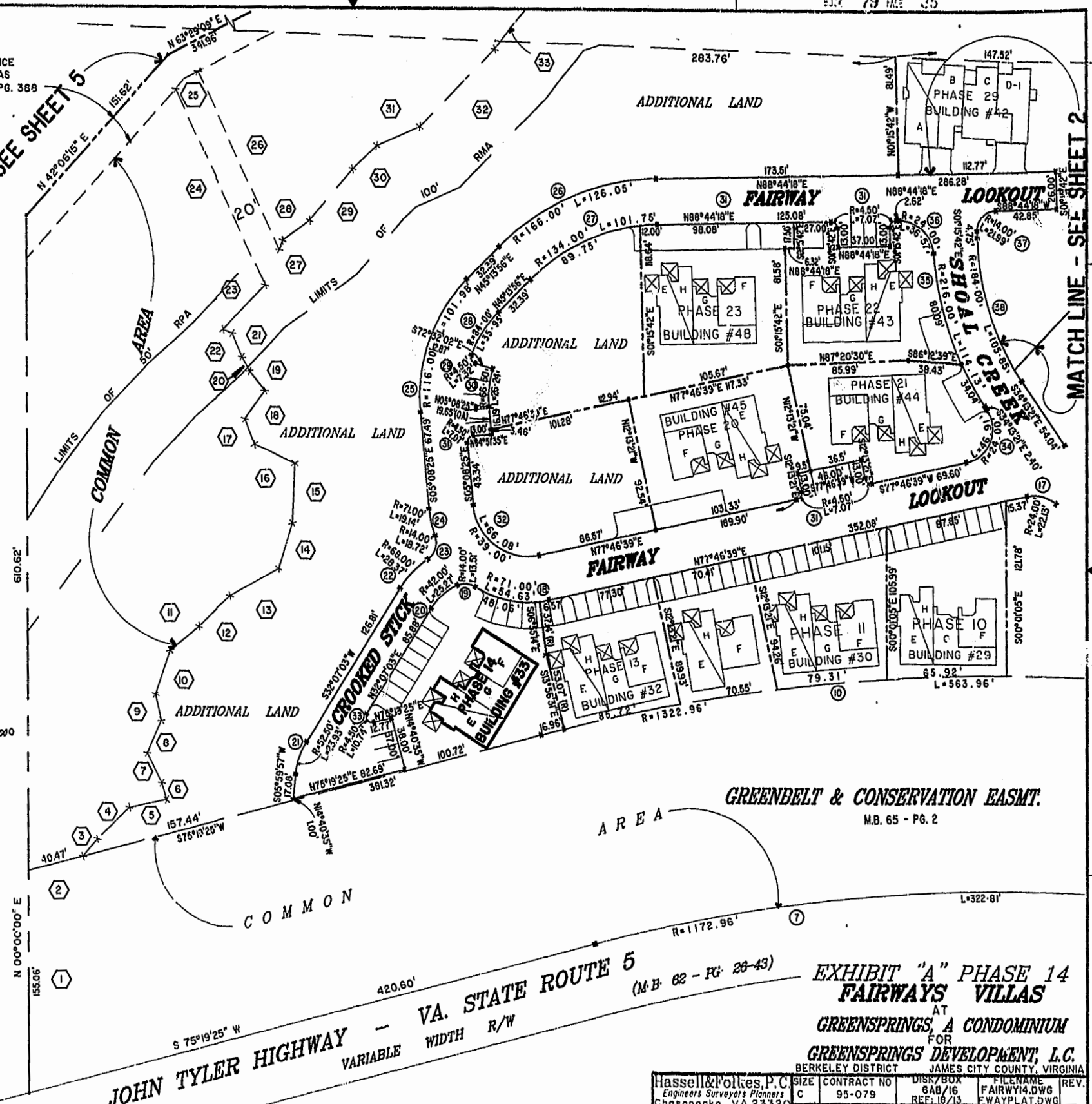


EXIST. 20' JAMES CITY COUNTY SERVICE AUTHORITY SAN. SEWER EASEMENT AS SHOWN IN AS-BUILT LOCATION. D.B. 141 - PG. 388



MATCH LINE - SEE SHEET 5

MATCH LINE - SEE SHEET 2



46-1-01-0-0001
"GREENSPRINGS PLANTATION"
(DB 322, PG 254)

Williamsburg/James City County

PLAT RECORDED IN P.B. NO. 79 PAGE 3237

Recorded 13 day of 27th month 2000
DOCUMENT # 2000-2000-155
Christopher D. Capozzi



JOHN TYLER HIGHWAY - VA. STATE ROUTE 5 (M.B. 02 - PG. 26-43)
VARIABLE WIDTH R/W

GREENBELT & CONSERVATION EASMT.
M.B. 65 - PG. 2

EXHIBIT "A" PHASE 14
FAIRWAYS VILLAS
AT
GREENSPRINGS, A CONDOMINIUM
FOR
GREENSPRINGS DEVELOPMENT, L.C.
BERKELEY DISTRICT JAMES CITY COUNTY, VIRGINIA

Hassell & Pollock, P.C. Engineers Surveyors Planners Chesapeake, VA 23320 (757) 547-9531	SIZE C	CONTRACT NO 95-079	DISK/BOX 6A8/16 REF: 18/13	FILENAME FAIRWAY14.DWG FWAYPLAT.DWG	REV.
SCALE: 1"=50'	DATE: 10/30/00	SHEET 4 of 6			