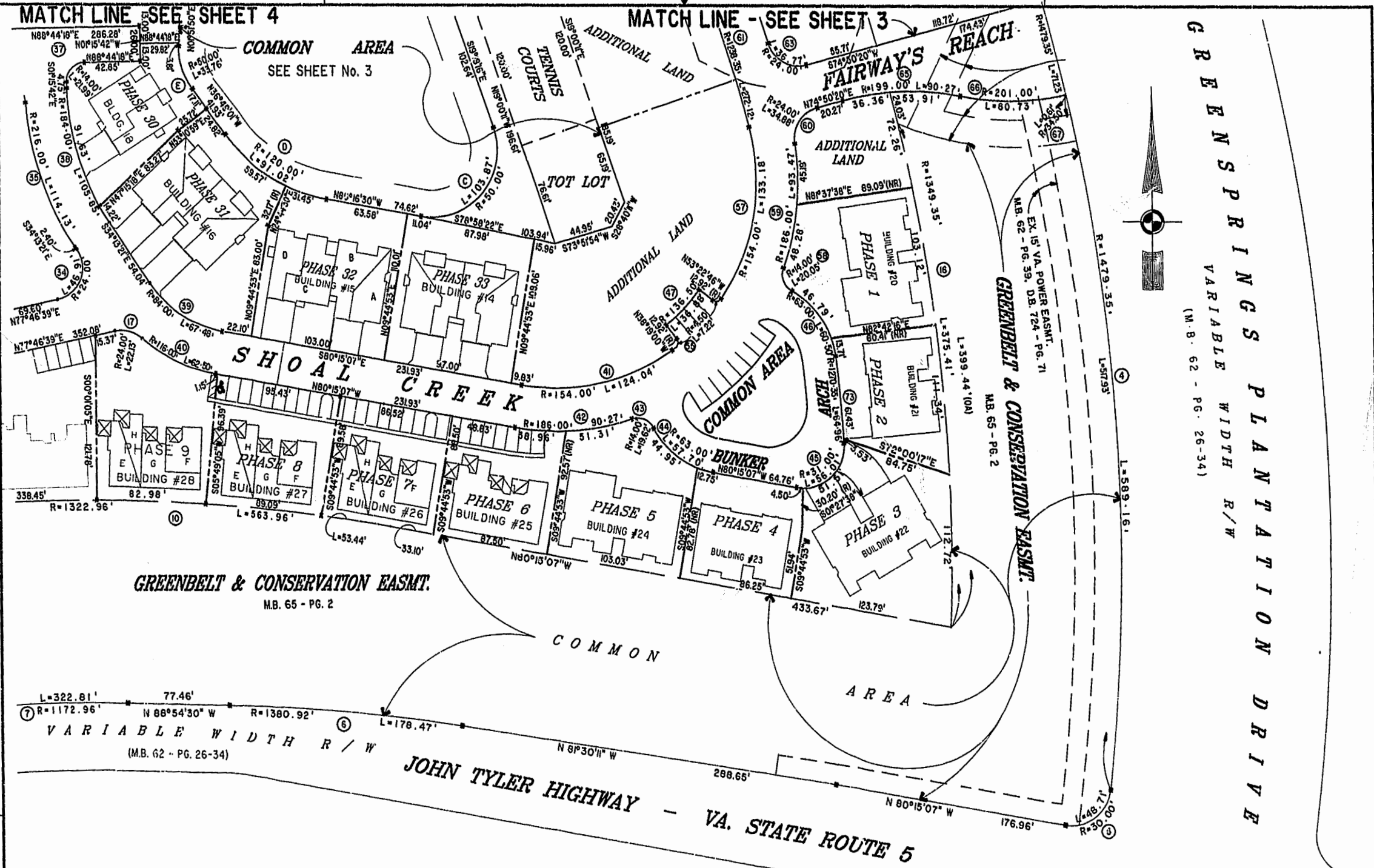


MATCH LINE SEE SHEET 4

MATCH LINE - SEE SHEET 3



GREENSPRINGS PLANTATION DRIVE
VARIABLE WIDTH R/W
(M.B. 62 - PG. 26-34)



GREENBELT & CONSERVATION EASMT.
M.B. 65 - PG. 2

VARIABLE WIDTH R/W
(M.B. 62 - PG. 26-34)

JOHN TYLER HIGHWAY - VA. STATE ROUTE 5

EXHIBIT "A" PHASE 14
FAIRWAYS VILLAS
AT
GREENSPRINGS, A CONDOMINIUM
FOR
GREENSPRINGS DEVELOPMENT, L.C.
BERKELEY DISTRICT JAMES CITY COUNTY, VIRGINIA



Williamsburg/James City County
Recorded 13 day of October 2000
DOCUMENT 0002000 145
Christopher D. Capozzi

PLAT RECORDED IN
P.B. NO. 19 PAGE 32-37

Hassell & Polkes, P.C. Engineers Surveyors Planners Chesapeake, VA. 23320 (757) 547-9531	SIZE C	CONTRACT NO. 95-079	DISK/BOX 6AB/16	FILENAME FAIRWY14.DWG	REV. F-WAYPLAT.DWG
SCALE: 1" = 50'	DATE: 10/30/00	SHEET 2 of 6			