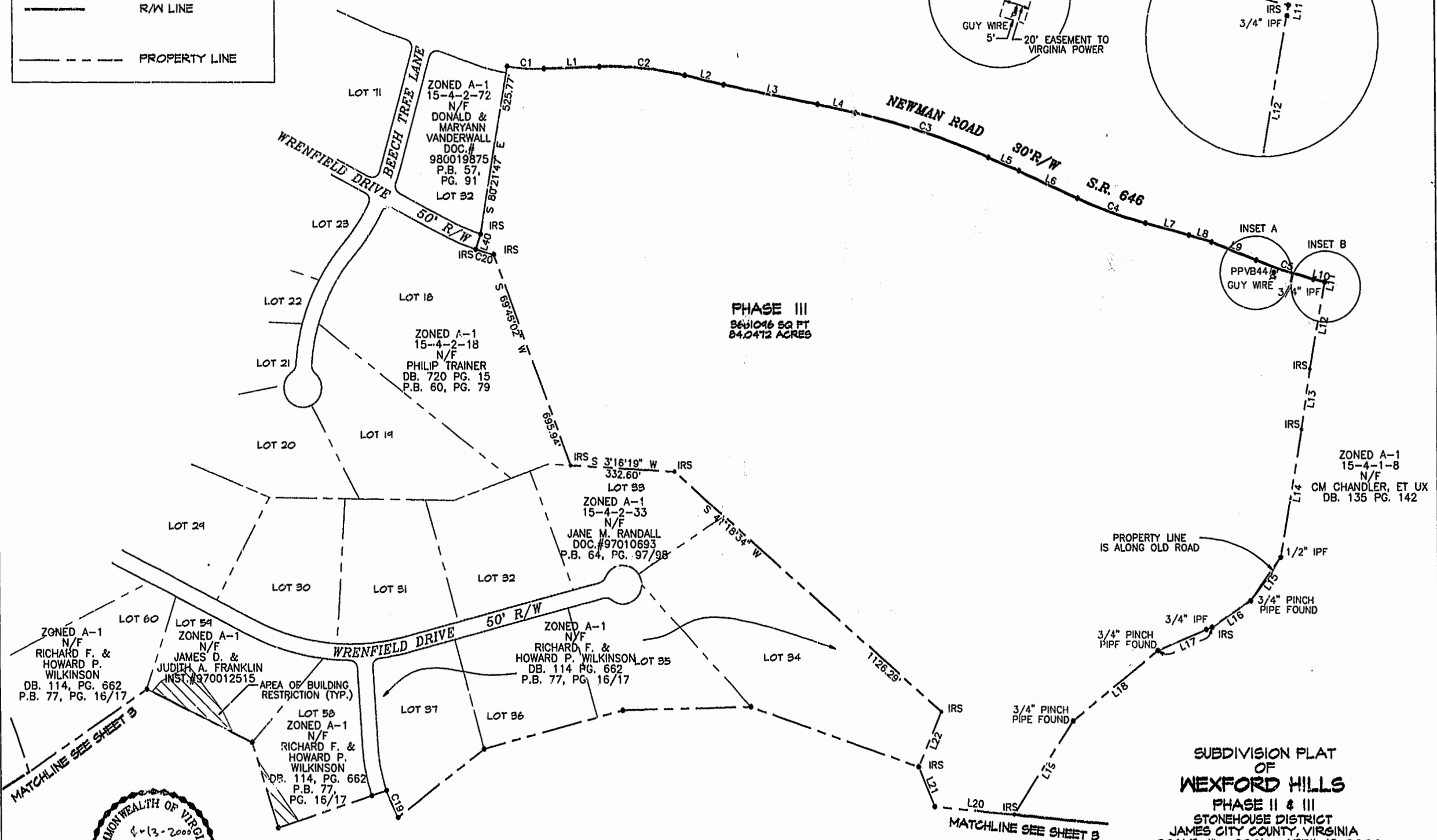
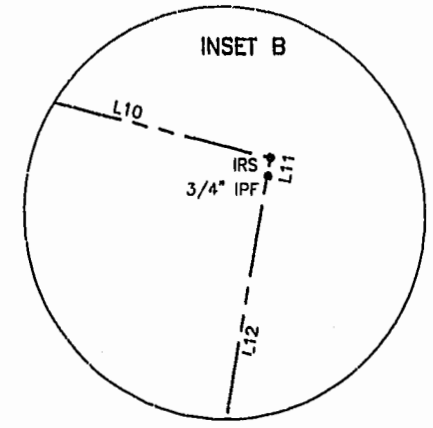
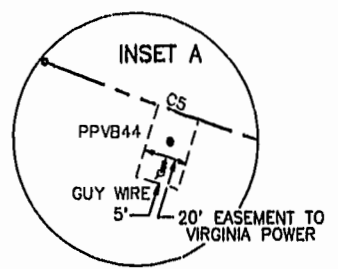
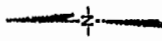


LEGEND

- IRON ROD TO BE SET (TYP.)
- R/W LINE
- - - PROPERTY LINE



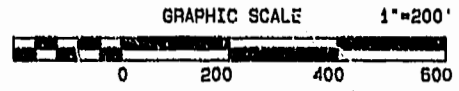
MATCHLINE SEE SHEET B

MATCHLINE SEE SHEET B



Williamsburg/James City County
10:40 AM 7/15/2000
PLAT RECORDED
P.B. NO. 74 PAGE 25

By *Stephen A. Romeo*
By *Christina H. Binkley, Dip. Clerk*



SUBDIVISION PLAT OF WEXFORD HILLS PHASE II & III
STONEHOUSE DISTRICT
JAMES CITY COUNTY, VIRGINIA
SCALE: 1" = 200' APRIL 19, 2000
SHEET 2 OF 3

