

# EXHIBIT B-2 SUPPLEMENTAL CONDOMINIUM PLATS OF WYNDHAM PLANTATION CONDOMINIUM

WILLIAMSBURG, VIRGINIA

DATE: OCTOBER 19, 2000 SCALE: 1"=100'

## MERRIMAC TRAIL - STATE ROUTE 143 (FORMERLY STATE ROUTE 168)

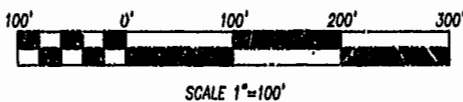
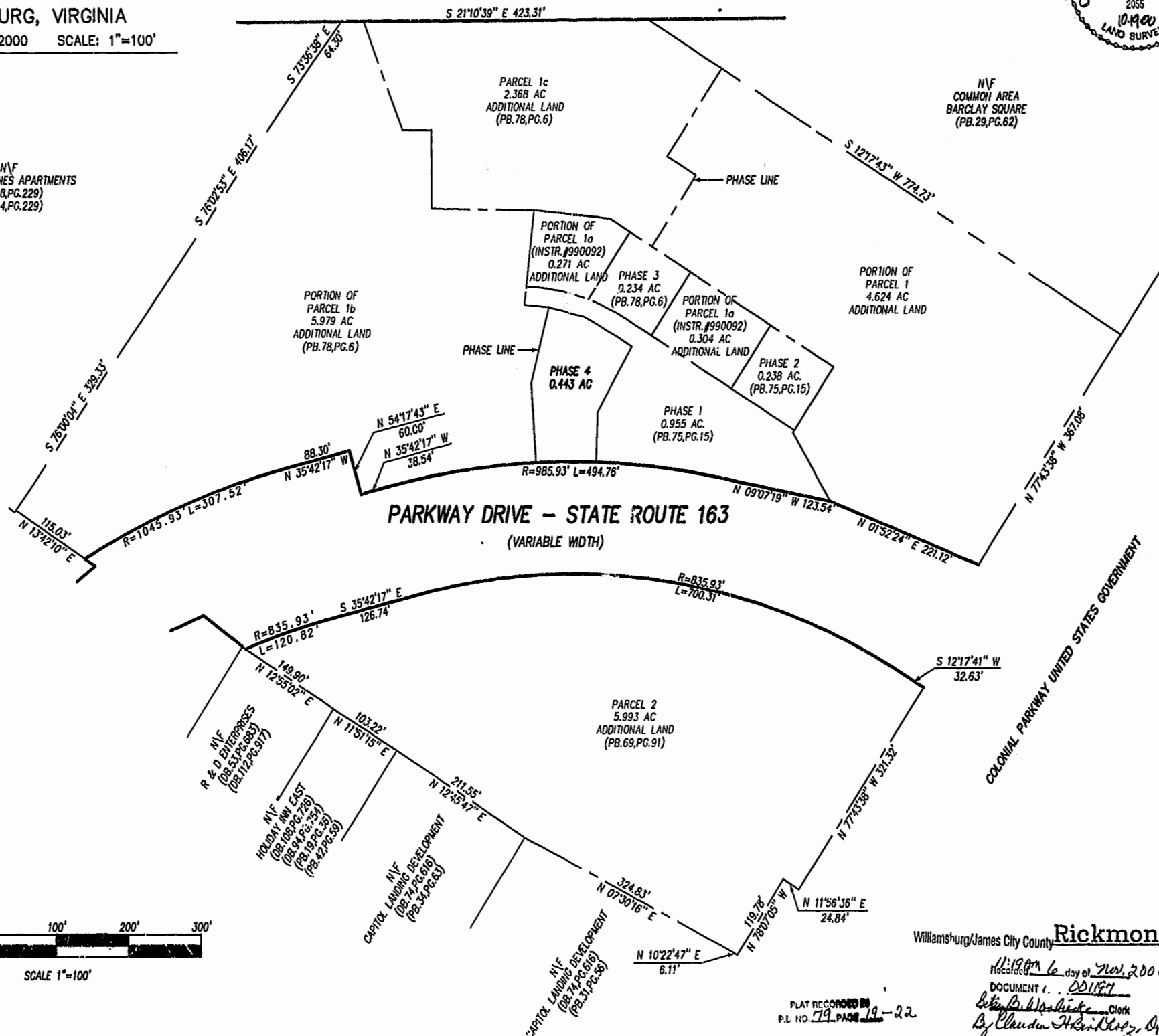
I HEREBY CERTIFY THAT THIS PLAT IS ACCURATE AND THAT IT COMPLIES WITH SECTION 55-79.58(A) OF THE VIRGINIA CONDOMINIUM ACT AS AMENDED AND THAT ALL UNITS OR PORTION THEREOF DEPICTED HEREON HAVE BEEN SUBSTANTIALLY COMPLETED EXCEPT AS OTHERWISE NOTED.



SIGNED: \_\_\_\_\_ DATE: 10/19/00

N/V  
COLONIAL PINES APARTMENTS  
(DB.48,PG.229)  
(DB.44,PG.229)

N/V  
COMMON AREA  
BARCLAY SQUARE  
(PB.29,PG.62)



SCALE 1"=100'

COLONIAL PARKWAY UNITED STATES GOVERNMENT

Williamsburg/James City County **Rickmond Engineering, Inc.**

11/19/00 6 day of Nov. 2000  
DOCUMENT # 00197

By *Claudia A. Smith*, Sp. Clk. SHEET 1 OF 4

PLAT RECORDED IN  
P.L. NO. 79 PAGE 19-22

Engineering  
Surveying  
Land Planning  
www.rickmond.com