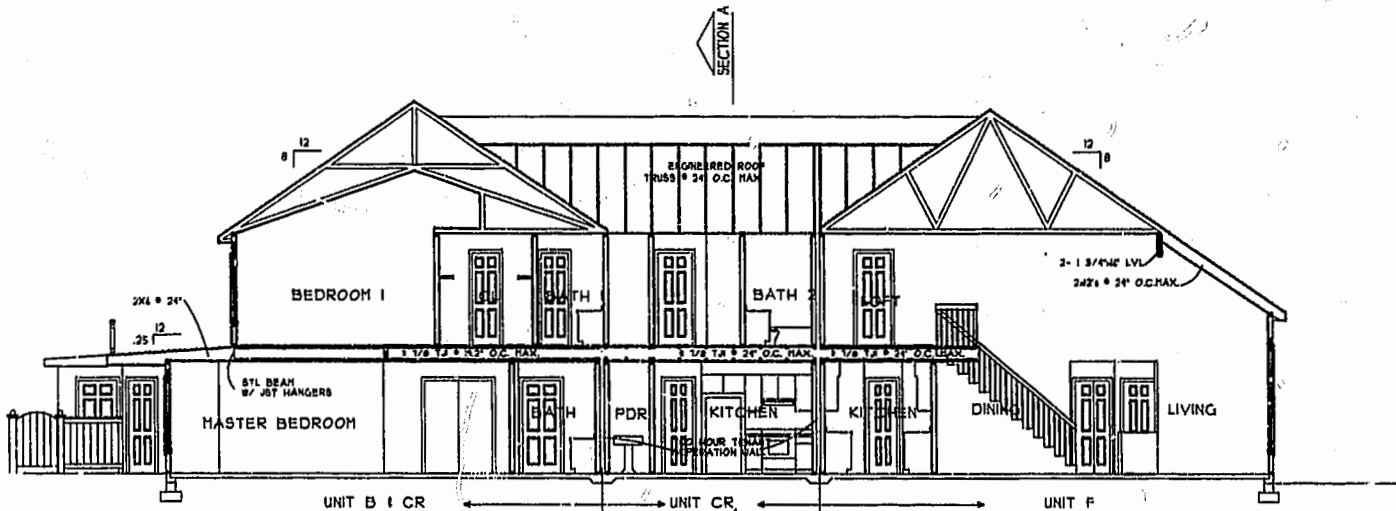
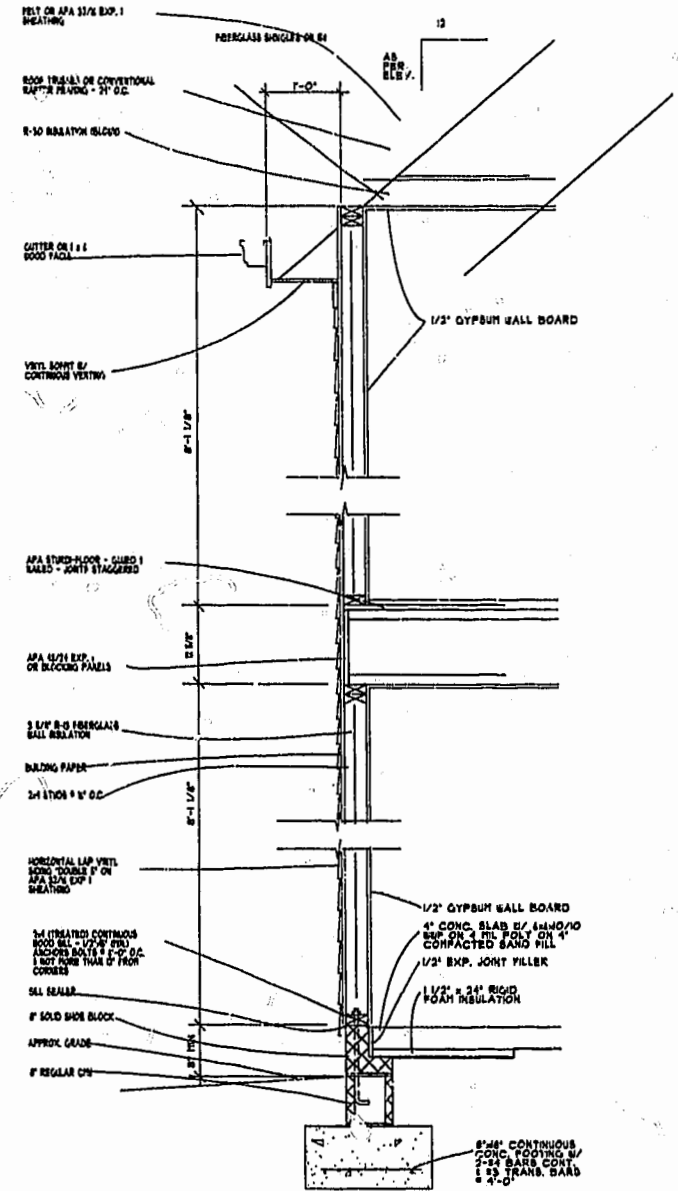


SECTION A-A



SECTION B-B



TYPICAL WALL SECTION

Williamsburg/James City County

8:59 AM  
Recorded 30 day of Oct. 2006

DOCUMENT # 001140

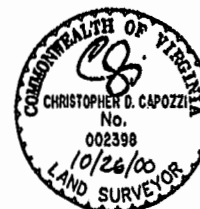
Betsy D. Woolridge, Clerk

BETSY D. WOOLRIDGE, CLERK OF CIRCUIT COURT

BRISTOL COMMONS  
A CONDOMINIUM COMMUNITY  
PHASE TWO

FOR  
KEY GROUP, LLC

CITY OF WILLIAMSBURG, VIRGINIA



PLAT RECORDED IN  
P.B. NO. 79 PAGE 12

Hassell & Folkes, P.C. Engineers Surveyors Planners Chesapeake, VA 23320 (757) 547-9531	SIZE C	CONTRACT NO 98082	DISK/BOX 123B/15	FILENAME BRISTOL2.DWG	REV.
SCALE: NONE		DATE: 10/26/00		SHEET 6 of 6	