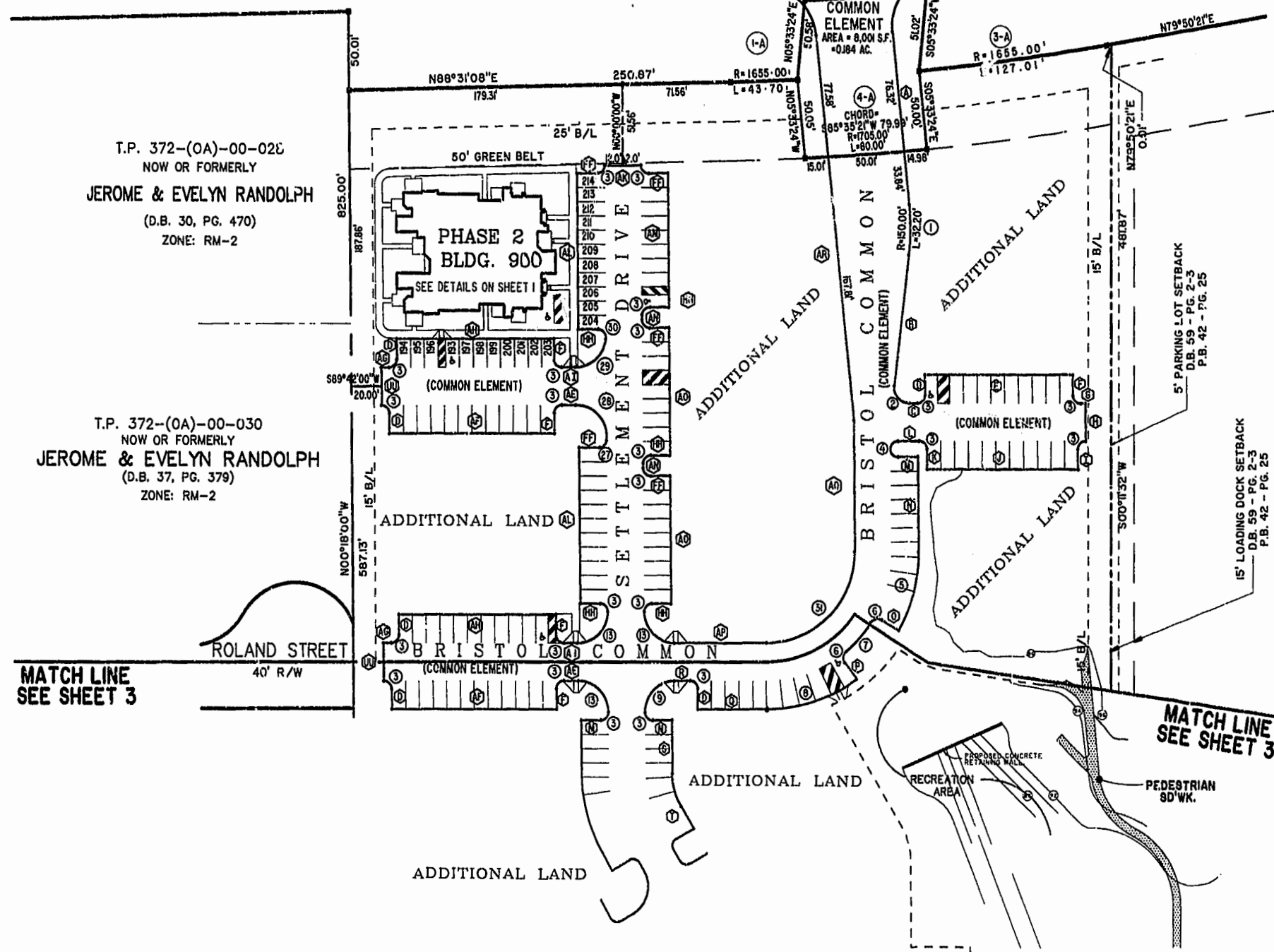
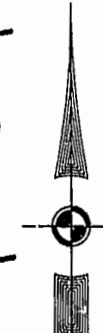


NOW OR FORMERLY
COLLEGE OF WILLIAM & MARY
IRONBOUND ROAD



T.P. 372--(0A)--00--02E
NOW OR FORMERLY
JEROME & EVELYN RANDOLPH
(D.B. 30, PG. 470)
ZONE: RM-2

T.P. 372--(0A)--00--030
NOW OR FORMERLY
JEROME & EVELYN RANDOLPH
(D.B. 37, PG. 379)
ZONE: RM-2

T.P. 372--(05)--00--001
NOW OR FORMERLY
CHESAPEAKE MEDIA, INC.
(D.B. 74, PG. 121)
(M.B. 42, PG. 25)
ZONE: B-2 CONDITIONAL

MATCH LINE
SEE SHEET 3

MATCH LINE
SEE SHEET 3

Williamsburg/James City County
8:57 AM
Recorded 30 day of Oct. 2000
DOCUMENT # 201140
[Signature] Clerk
BETSY B. WOOLRIDGE, CLERK OF CIRCUIT COURT

BRISTOL COMMONS
A CONDOMINIUM COMMUNITY
PHASE TWO
FOR
KEY GROUP, LLC
CITY OF WILLIAMSBURG, VIRGINIA

PLAT RECORDED IN
P.L. NO. 79 PAGE 7-12

Hassell & Folkes, P.C. Engineers Surveyors Planners Chesapeake, VA 23320 (757) 547-9531	SIZE C	CONTRACT NO 98062	DISK/BOX 1238/15	FILENAME BRISTOL2.DWG	REV.
SCALE: 1"=50'		DATE: 10/26/00		SHEET 2 of 6	