

PLAT OF SUBDIVISION  
WATERFORD  
AT  
POWHATAN SECONDARY  
PHASE TWENTY-FOUR  
BERKELEY DISTRICT  
JAMES CITY COUNTY, VA. - 1A

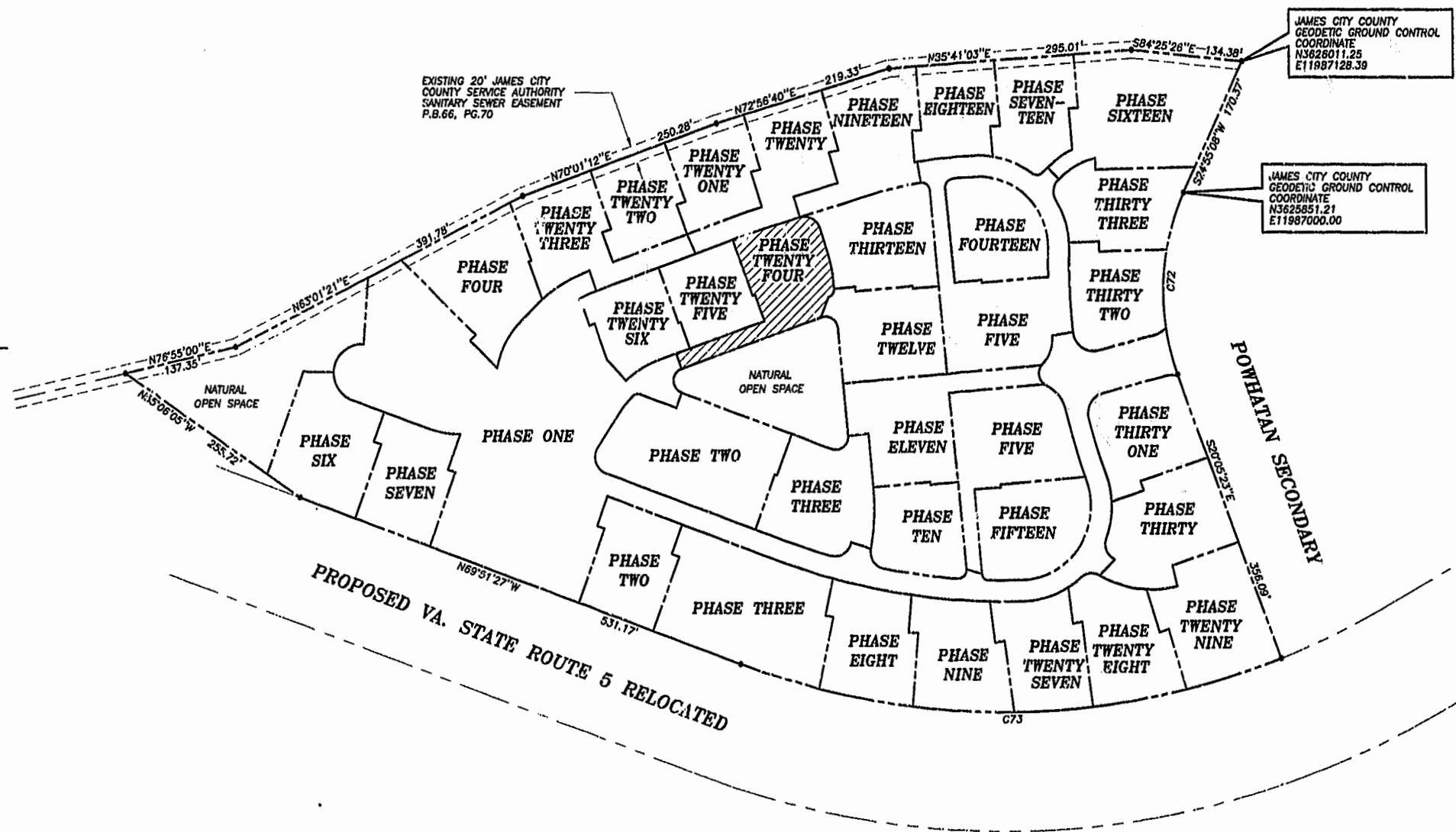
DATE: 10/21/98 SHEET 2 OF 3 SCALE: 1"=100'  
PROJECT NO: 97-008 DRAWN BY: SJB



SLEDD & ASSOCIATES, P.C.  
ENGINEERS PLANNERS SURVEYORS  
11832 ROCK LANDING DRIVE, SUITE 203  
NEWPORT NEWS, VIRGINIA 23608  
(757) 873-3388

00'32'24"  
JAMES CITY COUNTY  
TOWNSHIP  
GROUND CONTROL  
MERCATOR  
PLAT BOOK 66, PAGE 70

NOW OR FORMERLY  
POWHATAN ENTERPRISES, INC.



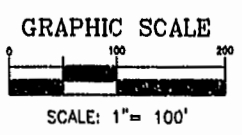
JAMES CITY COUNTY  
GEODETIC GROUND CONTROL  
COORDINATE  
N3628011.25  
E11887128.39

JAMES CITY COUNTY  
GEODETIC GROUND CONTROL  
COORDINATE  
N3625851.21  
E11887000.00



CURVE DATA

NUMBER	DELTA	RADIUS	LENGTH	TANGENT	CHORD	CHORD BEARING
C72	45'00'31"	280.00'	219.95'	116.00'	214.34'	S02'24'52"W
C73	41'26'14"	924.91'	668.91'	349.84'	654.43'	S89'25'26"W



PLAT RECORDED IN  
P.B. NO. 78 PAGE 99-101

Williamsburg/James City County  
Recorded 25<sup>th</sup> day of October, 2000  
DOCUMENT # 2000-20570-140  
MITSY B. WOOLRIDGE, CLERK OF CIRCUIT COURT