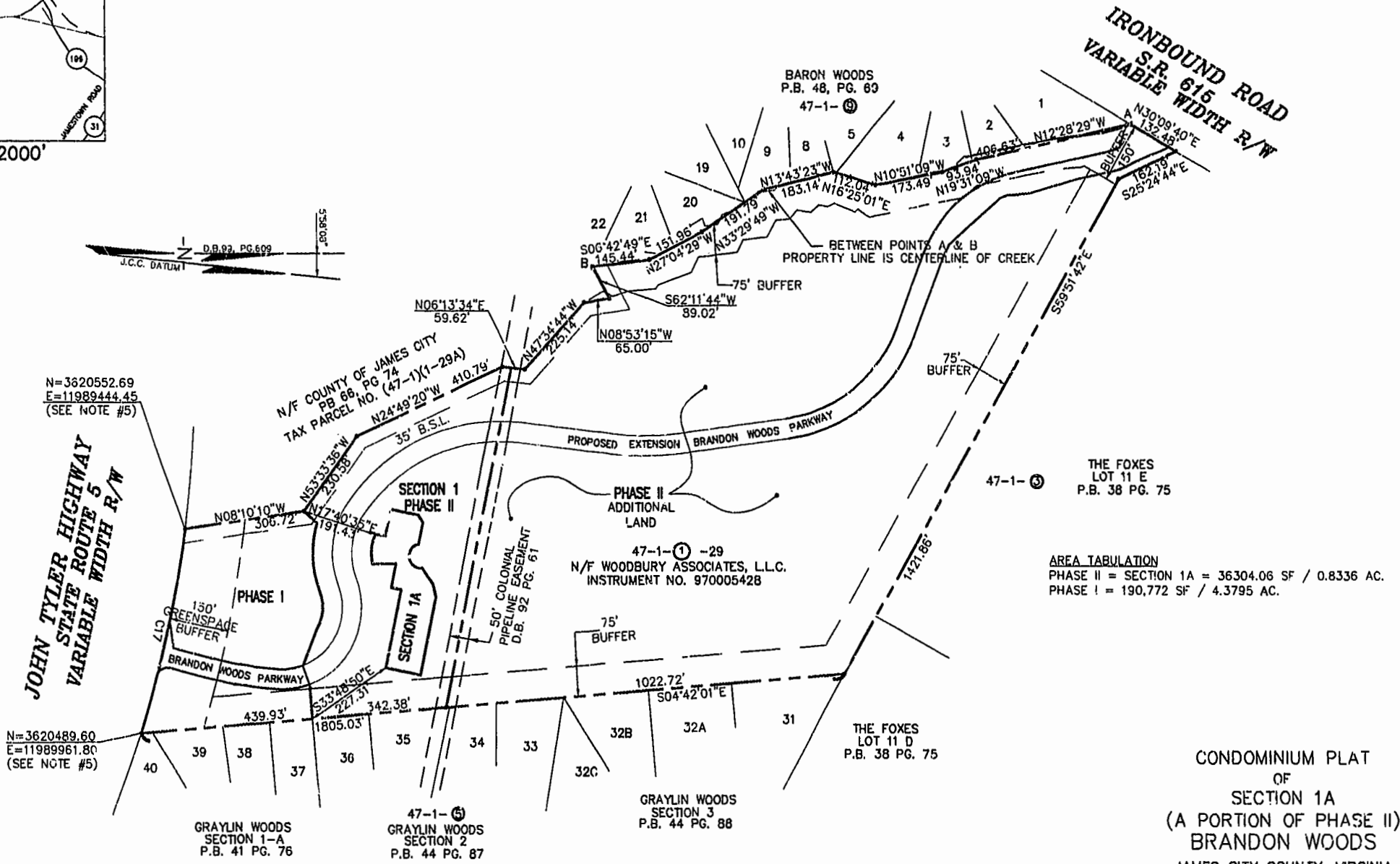
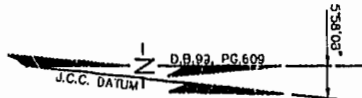


CURVE TABLE						
CURVE	LENGTH	RADIUS	TANGENT	CHORD BEARING	CHORD	DELTA
C17	521.88'	2904.79'	261.65'	N77°04'44"W	521.18'	10°17'36"

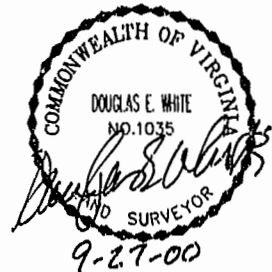


**AREA TABULATION**  
 PHASE II = SECTION 1A = 36304.06 SF / 0.8336 AC.  
 PHASE I = 190,772 SF / 4.3795 AC.

CONDOMINIUM PLAT  
 OF  
 SECTION 1A  
 (A PORTION OF PHASE II)  
 BRANDBON WOODS  
 JAMES CITY COUNTY, VIRGINIA  
 SCALE: 1"=200' DATE: 9/27/00  
 SHEET 1 OF 4

**LANDMARK DESIGN GROUP**  
 Engineers • Planners • Surveyors  
 Landscape Architects • Environmental Consultants  
 4029 IRONBOUND ROAD SUITE 100  
 WILLIAMSBURG, VA 23188  
 TEL (757) 253-2975 FAX(757) 229-0049

STATE OF VIRGINIA, COUNTY OF JAMES CITY  
 IN THE CLERK'S OFFICE OF THE CIRCUIT COURT THE PLAT SHOWN HEREON WAS PRESENTED AND ADMITTED TO RECORD  
 4 October 2000 AS THE LAW DIRECTS.  
 BETSY B. WOOLRIDGE, CLERK  
 TESTEE: *Mona Powell*, Deputy CLERK  
 PLAT BOOK 78 PAGE 79-82



Williamsburg/James City County  
 11:25 AM  
 Recorded  
 DOCUMENT # 000019338  
 Mona Powell, Dep. Clerk  
 BETSY B. WOOLRIDGE, CLERK

