

PLAT OF SUBDIVISION
WATERFORD
AT
POWHATAN SECONDARY
PHASE NINE
BERKELEE DISTRICT
JAMES CITY COUNTY, VIRGINIA

DATE: 10/21/98 SHEET 2 OF 3 SCALE: 1"=100'

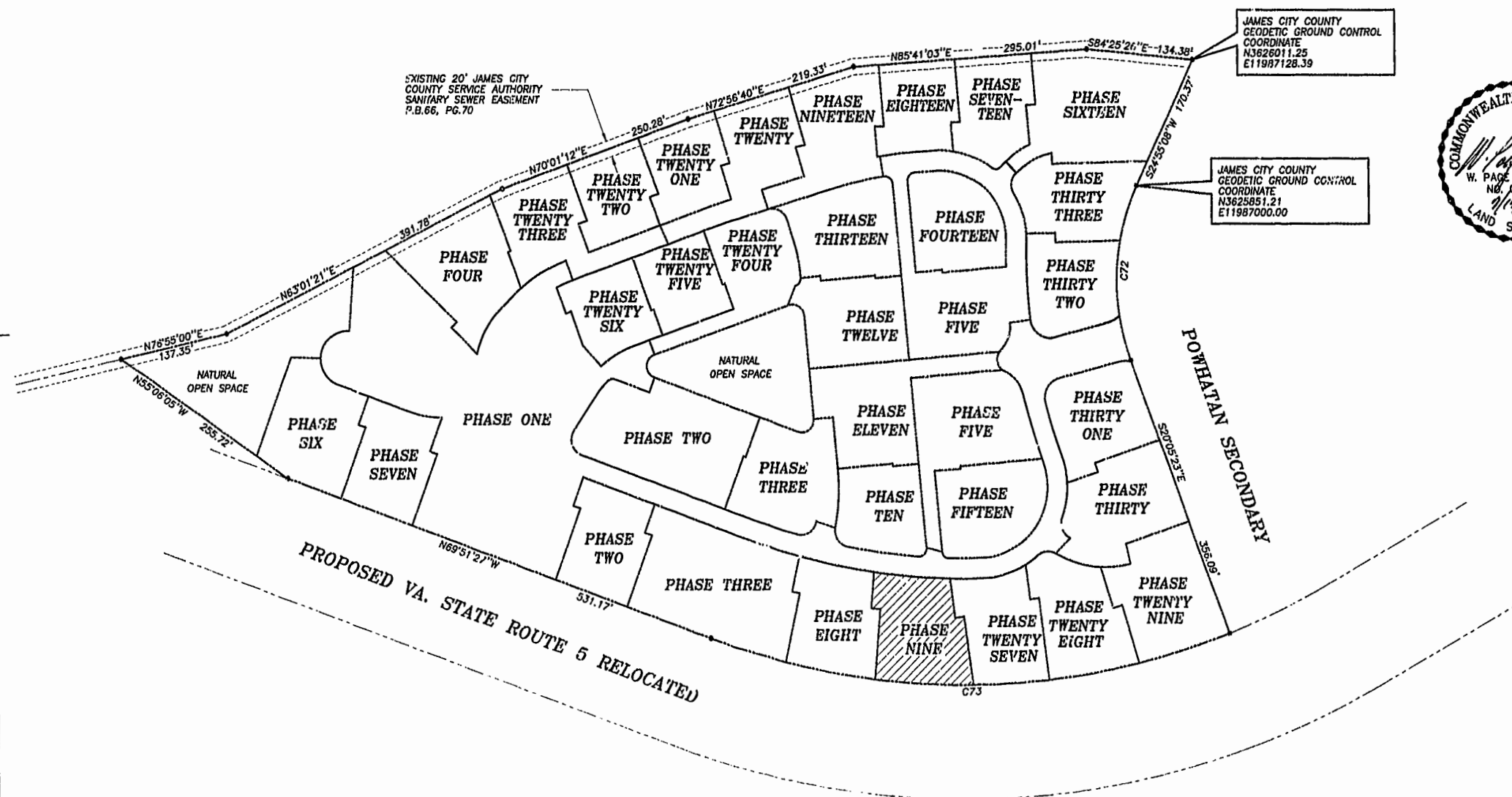
PROJECT NO: 97-008 DRAWN BY: SJB



SLEDD & ASSOCIATES, P.C.
ENGINEERS PLANNERS SURVEYORS
11832 ROCK LANDING DRIVE, SUITE 203
NEWPORT NEWS, VIRGINIA 23606
(757) 873-3386

00°32'24"
JAMES CITY COUNTY
GROUND CONTROL
MERIDIAN
PLAT BOOK 66, PAGE 70

NEW OR FORMERLY
POWHATAN ENTERPRISES, INC.



JAMES CITY COUNTY
GEODETIC GROUND CONTROL
COORDINATE
N3626011.25
E11987128.39

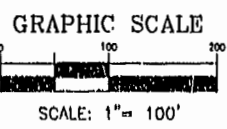
JAMES CITY COUNTY
GEODETIC GROUND CONTROL
COORDINATE
N3625851.21
E11987000.00



PROPOSED VA. STATE ROUTE 5 RELOCATED

CURVE DATA

NUMBER	DELTA	RADIUS	LENGTH	TANGENT	CHORD	CHORD BEARING
C72	45°00'31"	280.00'	219.95'	116.00'	214.34'	S02°24'52"W
C73	41°26'14"	924.91'	668.91'	349.84'	654.43'	S89°25'26"W



Williamsburg/James City County
11:35 AM
Recorded 15 day of Oct. 2000
DOCUMENT # 000017680
[Signature] Clerk
BETSY D. WOOLIDGE, CLERK OF CIRCUIT COURT