

PLAT OF SUBDIVISION
WATERFORD
 AT
POWHATAN SECONDARY

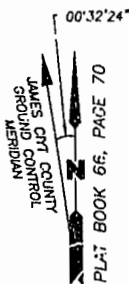
PHASE TWENTY-FIVE
 BERKELEY DISTRICT
 JAMES CITY COUNTY, VIRGINIA

DATE: 10/21/98 SHEET 2 OF 3 SCALE: 1"=100'

PROJECT NO: 97-008 DRAWN BY: SJB



SLEDD & ASSOCIATES, P.C.
 ENGINEERS PLANNERS SURVEYORS
 11832 ROCK LANDING DRIVE, SUITE 203
 NEWPORT NEWS, VIRGINIA 23606
 (757) 873-3386

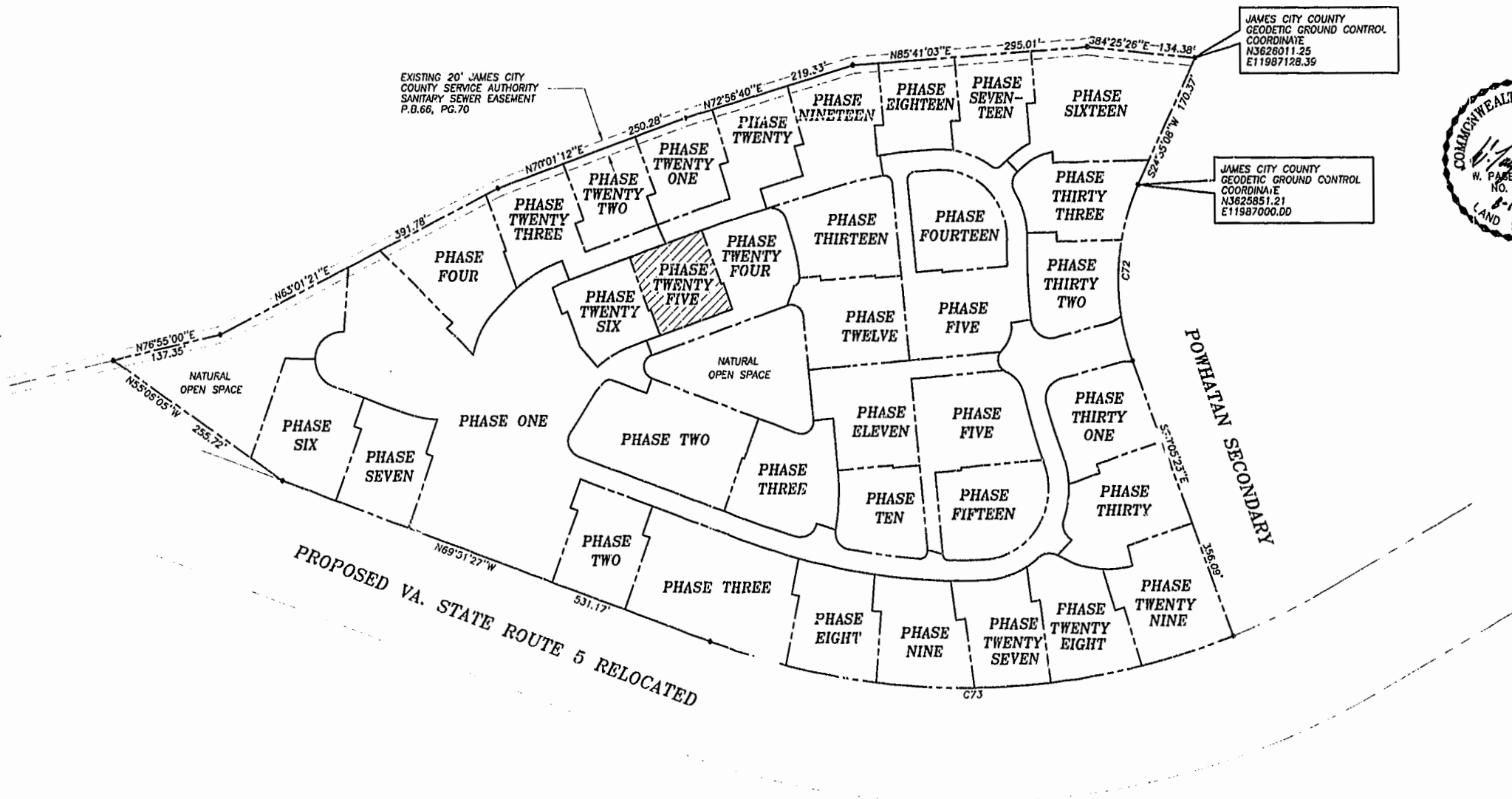


NOW OR FORMERLY
 POWHATAN ENTERPRISES, INC.

EXISTING 20' JAMES CITY
 COUNTY SERVICE AUTHORITY
 SANITARY SEWER EASEMENT
 P.B.66, PG.70

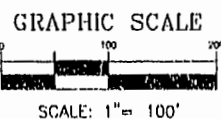
JAMES CITY COUNTY
 GEODETIC GROUND CONTROL
 COORDINATE
 N3626011.25
 E11987128.39

JAMES CITY COUNTY
 GEODETIC GROUND CONTROL
 COORDINATE
 N3625851.21
 E11987000.00



CURVE DATA

NUMBER	DELTA	RADIUS	LENGTH	TANGENT	CHORD	CHORD BEARING
C72	45°00'31"	280.00'	219.95'	116.00'	214.34'	S02°24'52"W
C73	41°26'14"	924.91'	668.91'	349.84'	654.43'	S89°24'26"W



Williamsburg/James City County

2:35 pm
 dated 12 day of September 2000
 DOCUMENT # 00002250
 Betsy B. Woodlodge, Clerk of Circuit Court