

SUBDIVISION PLAT
OF
PARCELS 56 & 57
BEING A PORTION OF PARCEL C
BUSCH CORPORATE CENTER - WILLIAMSBURG
STANDING IN THE NAME OF BUSCH PROPERTIES, INC.
ROBERTS DISTRICT JAMES CITY COUNTY, VIRGINIA

DATE: 6/26/00 SCALE: 1" = 40'

SHEET 2 OF 2



Engineers • Planners • Surveyors
Landscape Architects • Environmental Consultants

50-2-(9)-55A
N/F
IROQUOIS PROPERTIES
PARCEL 55A
P.B. 39 PG. 22



50-2-(14)-1
N/F
JIM GRIFFITH BUILDER
PARCELS 51A 52A 52B
P.B. 66 PG. 73

50-2-(1)-59A
PARCEL 59A
P.B. 61 PG. 67

N 3618762.337
E 12017382.606

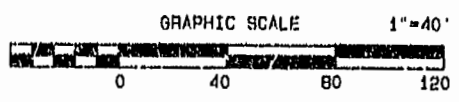
50-2-(1)-77
PAR. OF
PARCEL C
PARCEL 57
P.B. 33 PG. 72
87,118 SQ. FT.
2.0000 AC.

50-2-(1)-77
PART OF
PARCEL C
PARCEL 56
P.B. 33 PG. 72
125,315 SQ. FT.
2.8768 AC.

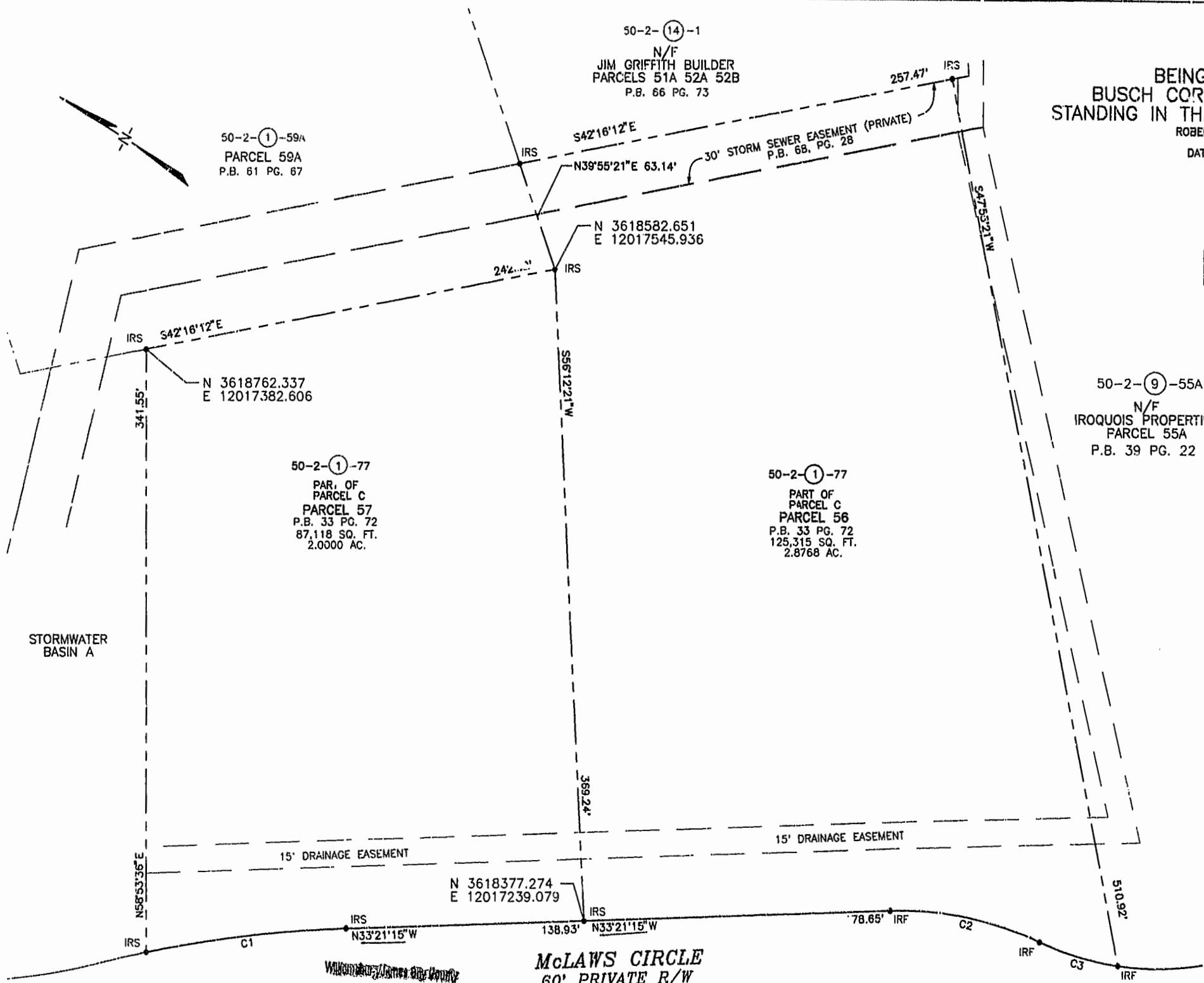
N 3618377.274
E 12017239.079

McLAWS CIRCLE
60' PRIVATE R/W

Recorded *11 days on Sept. 2000*
DOCUMENT # 2000-7090 @ 12:00 PM
Woolridge
BY TSY B. WOOLRIDGE, CLERK OF CIRCUIT COURT
PLAT BY RECORDING # 83
P.B. NO. 28 PAGE 52-53



CURVE TABLE						
LINE	RADIUS	ARC	CHORD BEARING	CHORD	DELTA	TANGENT
C1	713.34'	117.73'	N38°04'51"W	117.59'	0°27'12"	59.00'
C2	194.66'	90.13'	N20°05'25"W	89.33'	26°31'41"	45.89'
C3	165.20'	47.81'	N15°06'58"W	47.64'	16°34'40"	24.07'



STORMWATER
BASIN A