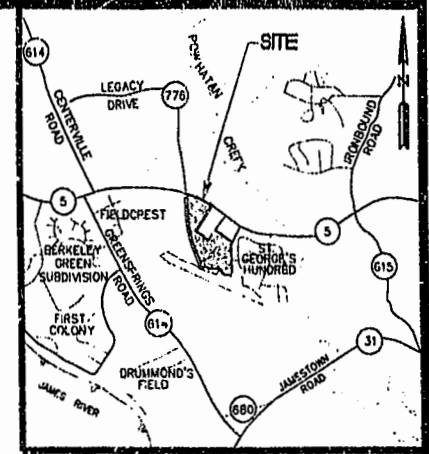
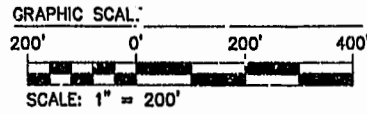


CURVE DATA

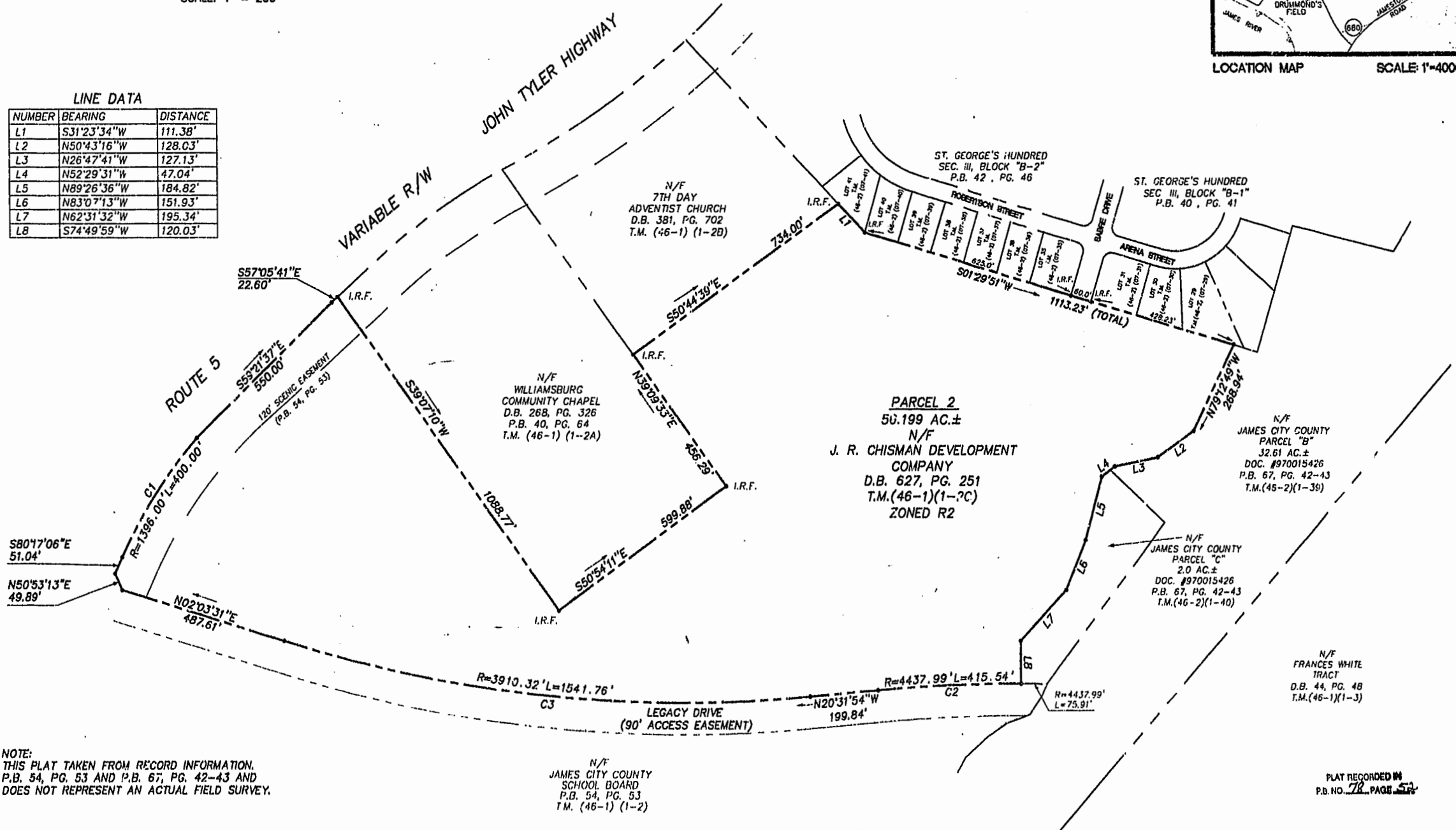
NUMBER	DELTA	RADIUS	LENGTH	TANGENT	CHORD	CH. BEARING
C1	16°25'02"	1396.00	400.00	201.38	338.64	S72°04'35"E
C2	05°21'53"	4437.99	415.54	207.92	415.39	N17°50'58"W
C3	22°35'26"	3910.32	1541.76	781.02	1531.79	N09°14'11"W



LOCATION MAP SCALE: 1"=4000'

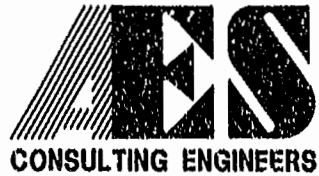
LINE DATA

NUMBER	BEARING	DISTANCE
L1	S31°23'34"W	111.38'
L2	N50°43'16"W	128.03'
L3	N26°47'41"W	127.13'
L4	N52°29'31"W	47.04'
L5	N89°26'36"W	184.82'
L6	N83°07'13"W	151.93'
L7	N62°31'32"W	195.34'
L8	S74°49'59"W	120.03'



NOTE:  
THIS PLAT TAKEN FROM RECORD INFORMATION.  
P.B. 54, PG. 53 AND P.B. 67, PG. 42-43 AND  
DOES NOT REPRESENT AN ACTUAL FIELD SURVEY.

PLAT RECORDED IN  
P.B. NO. 78, PAGE 52



5248 Olde Towne Road, Suite 1  
Williamsburg, Virginia 23188  
(757) 253-0040  
Fax (757) 220-8994

PLAT SHOWING  
A PARCEL CONTAINING  
56.199 ACRES±  
OWNED BY  
**J. R. CHISMAN DEVELOPMENT COMPANY**  
BERKELEY DISTRICT    JAMES CITY COUNTY    VIRGINIA



No.	DATE	REVISION / COMMENT / NOTE	BY
		Williamsburg/James City County	
		Recorded 2/19/00	
		21 day of Aug 2000	
		DOCUMENT # 000016486	
		Clary J. Woolridge, Clerk	
		BETSY B. WOOLRIDGE, CLERK OF CIRCUIT COURT	

Designed	Drawn
DPW	JKR/JFS
Scale	Date
1"=200'	2/02/00
Project No.	
6201-7	
Drawing No.	
1 OF 1	