

EXIST. 20' JAMES CITY COUNTY SERVICE AUTHORITY SAN. SEWER EASEMENT AS SHOWN IN AS-BUILT LOCATION. D.B. 141 - PG. 388



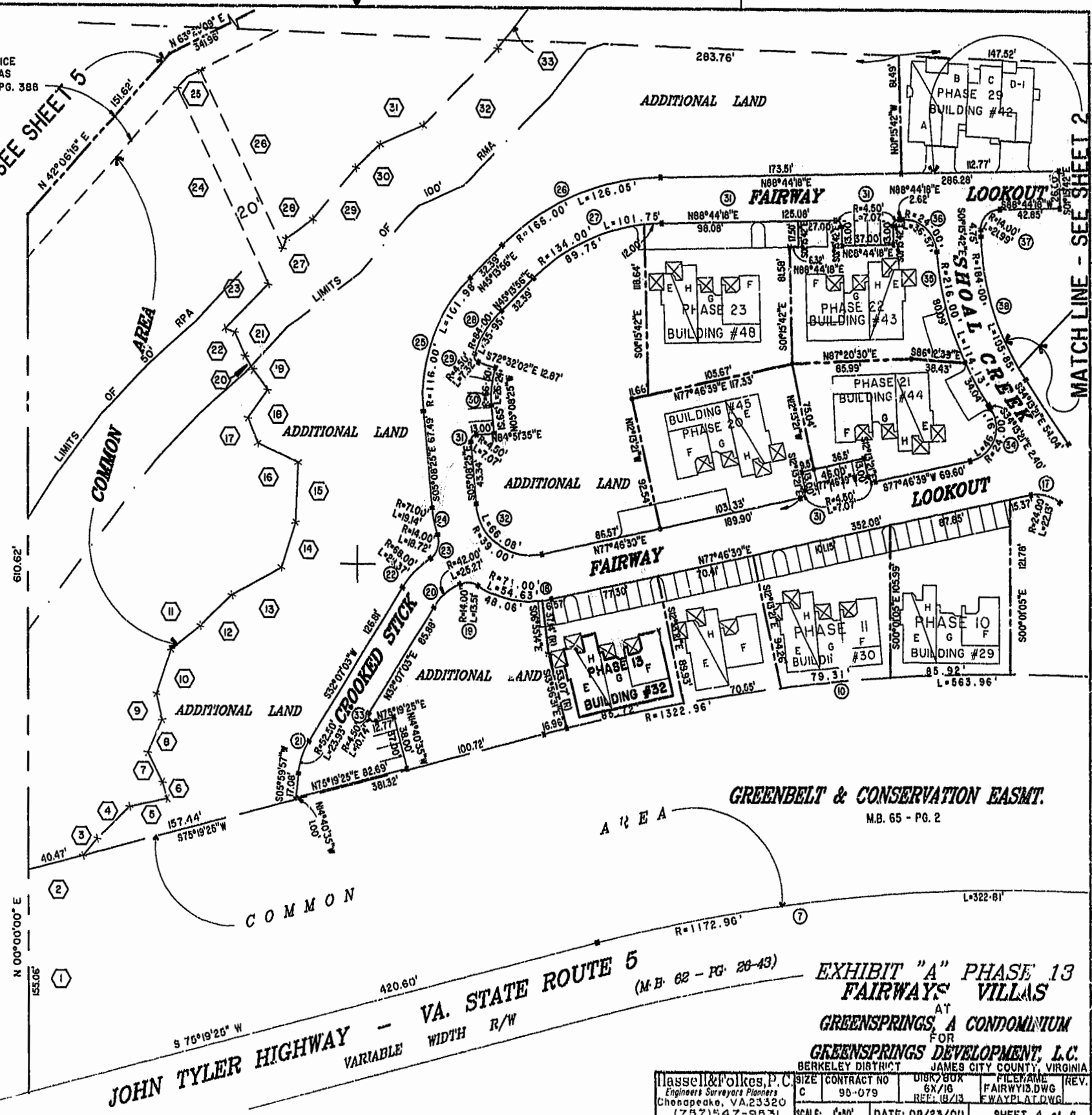
MATCH LINE - SEE SHEET 5

MATCH LINE - SEE SHEET 2

46-1-01-0-0001  
"GREENSPRINGS PLANTATION"  
(DB 322, PG 254)

PLAN RECORDED IN  
DB 322, PAGE 1651

Williamsburg/James City County  
Recorded 29 August, 2000  
DOCUMENT # 000016333  
DETSY B. WOOLRIDGE, CLERK OF CIRCUIT COURT



VA. STATE ROUTE 5  
JOHN TYLER HIGHWAY - VARIABLE WIDTH R/W  
S 76°19'25" W 420.60'

GREENBELT & CONSERVATION EASMT.  
M.B. 65 - PG. 2

EXHIBIT "A" PHASE 13  
FAIRWAYS VILLAS  
AT  
GREENSPRINGS, A CONDOMINIUM  
FOR  
GREENSPRINGS DEVELOPMENT, L.C.

Hassell & Folkes, P.C. Engineers Surveyors Planners Chesapeake, VA, 23320 (757) 547-9831	BERKELEY DISTRICT CONTRACT NO. 90-079	DISK/BOX 6X/16 REF: 18/13	FILENAME FAIRWAY13.DWG FWAYPLAT.DWG
SCALE: 1"=80'	DATE: 08/23/00	SHEET 4 of 6	