

46-1-01-0-0001  
"GREENSPRINGS PLANTATION"  
(DB 322, PG 254)

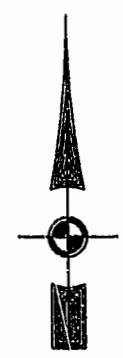
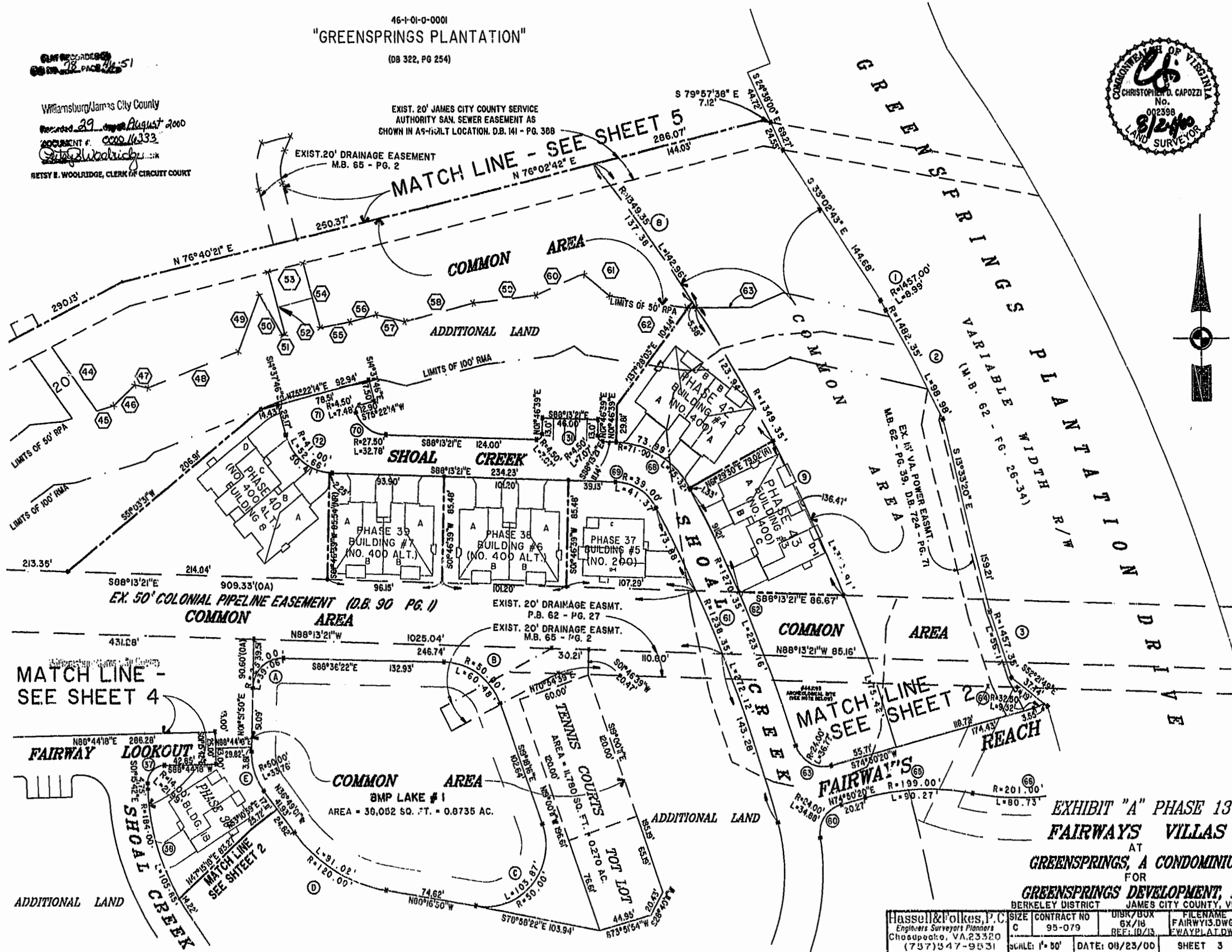


Williamsburg/James City County  
Recorded 29 August 2000  
DOCUMENT # 000016333  
RETSY B. WOOLRIDGE, CLERK OF CIRCUIT COURT

EXIST. 20' JAMES CITY COUNTY SERVICE  
AUTHORITY SAN. SEWER EASEMENT AS  
SHOWN IN AS-BUILT LOCATION. D.B. 141 - PG. 308

EXIST. 20' DRAINAGE EASEMENT  
M.B. 65 - PG. 2

MATCH LINE - SEE SHEET 5  
N 76°02'42" E  
286.07'  
144.03'



MATCH LINE -  
SEE SHEET 4

MATCH LINE  
SEE SHEET 2

EXHIBIT "A" PHASE 13  
FAIRWAYS VILLAS  
AT  
GREENSPRINGS, A CONDOMINIUM  
FOR

GREENSPRINGS DEVELOPMENT, L.C.  
BERKELEY DISTRICT JAMES CITY COUNTY, VIRGINIA

|   |                              |                                 |                |  |                      |
|---|------------------------------|---------------------------------|----------------|--|----------------------|
| Hassel & Folkes, P.C.<br>Engineers Surveyors Planners<br>Chesapeake, VA 23320<br>(757) 347-9531 | SIZE CONTRACT NO<br>C 95-079 | DISK/BOX<br>6X/16<br>REF: 10/13 | DATE: 08/23/00 | FILENAME<br>FAIRWY13.DWG<br>FWAYPLAT.DWG | REV.<br>SHEET 3 of 6 |
|---|------------------------------|---------------------------------|----------------|--|----------------------|

CONDO-3