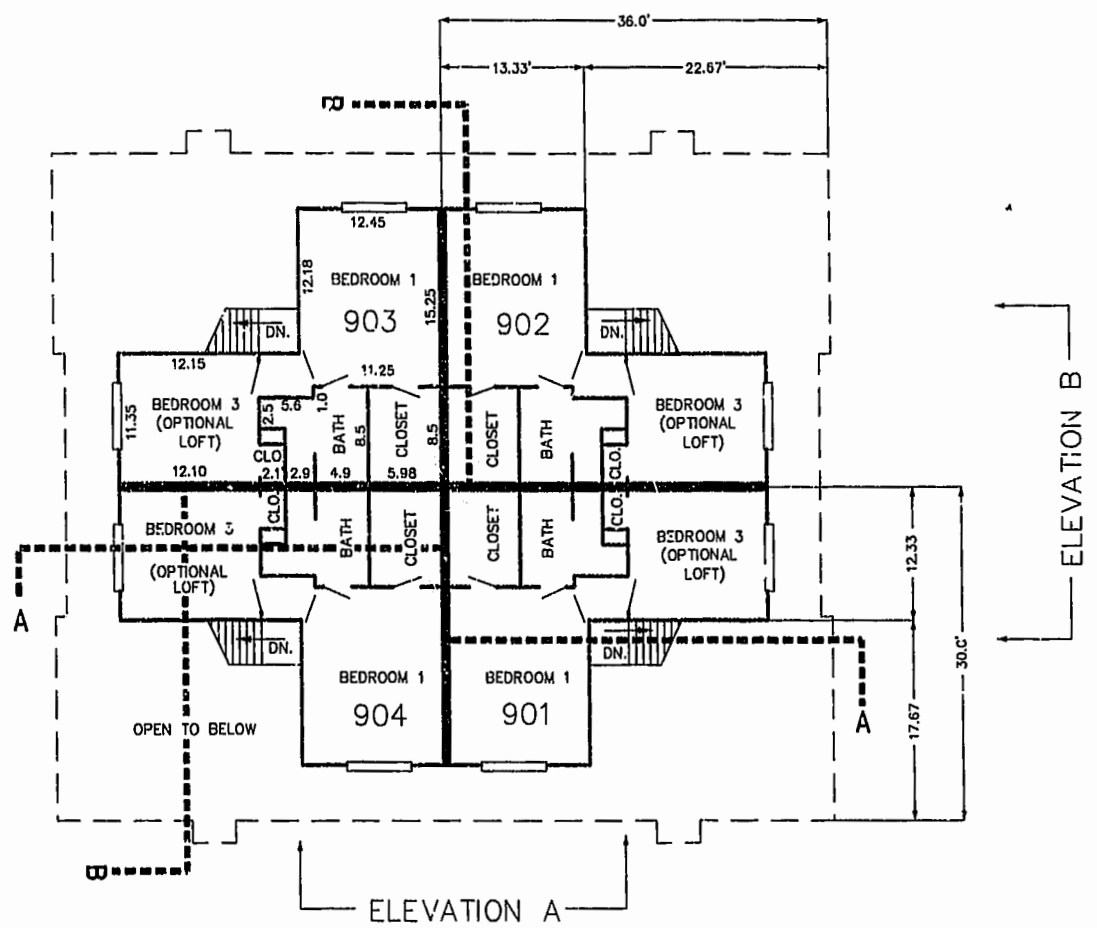


FIRST FLOOR PLAN
(UNIT #903 IS TYPICAL)



SECOND FLOOR PLAN
(UNIT #903 IS TYPICAL)

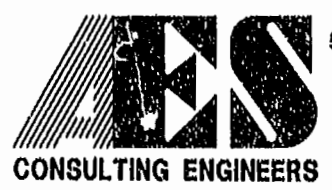


ELEVATION A



ELEVATION B

PLAT RECORDED IN
P.D. NO. 78 PAGE 44



5248 Olde Towne Road, Suite 1
Williamsburg, Virginia 23188
(757) 253-0040
Fax (757) 220-8994

PLAT OF CONDOMINIUM
WESTGATE AT WILLIAMSBURG,
A CONDOMINIUM
PHASE EIGHT
OWNED BY: 752 L.L.C.,
A VIRGINIA LIMITED LIABILITY COMPANY
CITY OF WILLIAMSBURG VIRGINIA



Williamsburg/James City County		
11.15 AM	Recorded	29 day of Aug. 2000
DOCUMENT # 000 929		
METEV. M. WOODRIDGE, CLERK OF CIRCUIT COURT		
No.	DATE	REVISION / COMMENT / NOTE
		BY

Designed	Drawn
GTW/ADS	JFS
Scale	Date
1" = 10'	8/28/00
Project No.	
8395-6	
Drawing No.	
5 OF 6	

08.27.00-10:15 8395PH85.DWG