

POCAHONTAS TRAIL S.R. 60 R/W VARIES

COMPOSITE PLAT
OF EXISTING PRIVATE RIGHT OF WAYS
AND PLAT OF SUBDIVISION
OF PRIVATE RIGHT OF WAY
AND STORMWATER BASINS A & B
BEING A PORTION OF PARCEL C
BUSCH CORPORATE CENTER - WILLIAMSBURG

JAMES CITY COUNTY AND YORK COUNTY, VIRGINIA

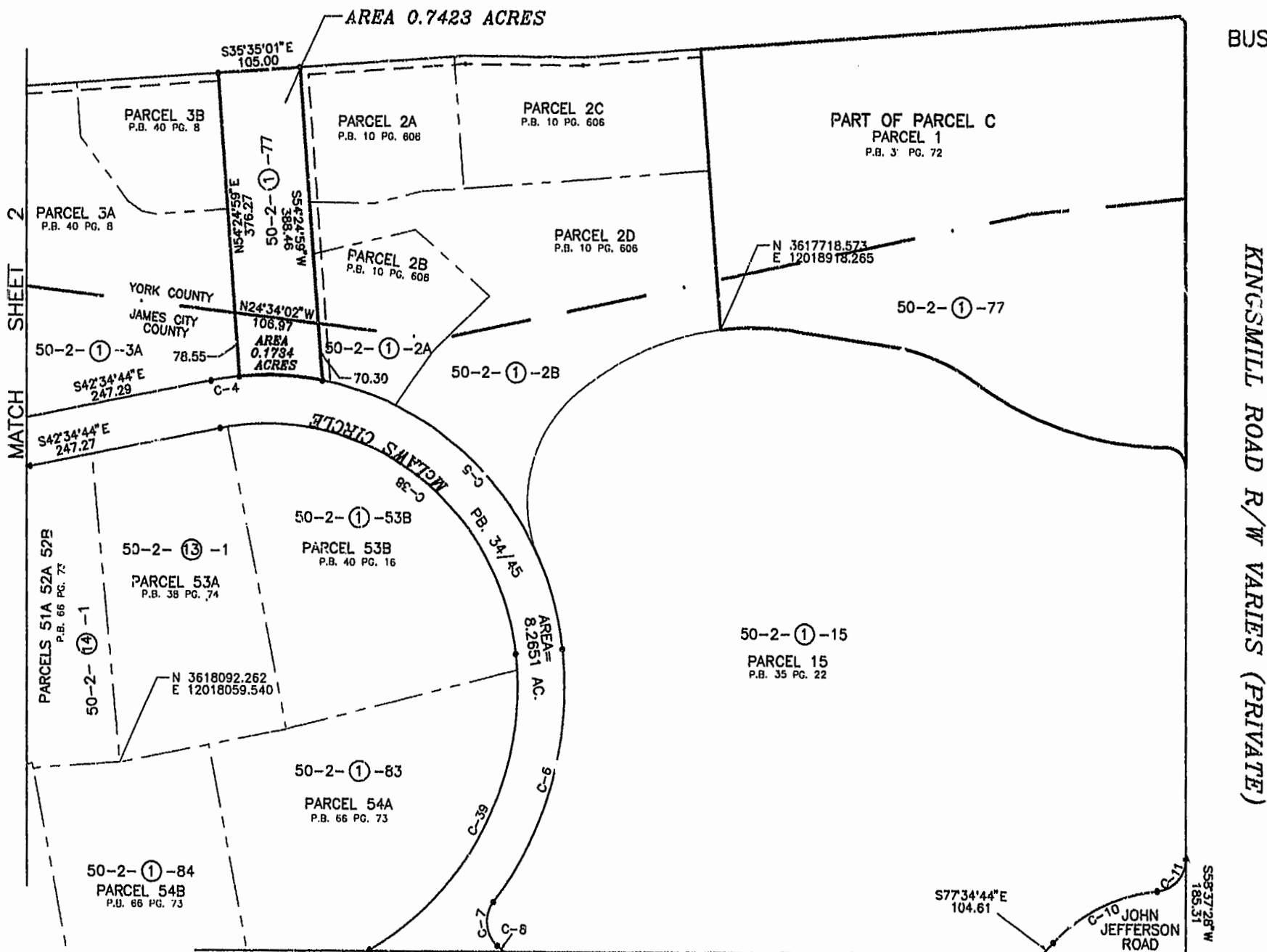
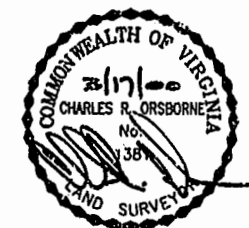
DATE: 3/16/00

SCALE: 1" = 100'

SHEET 3 OF 5

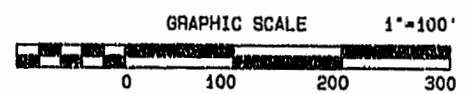
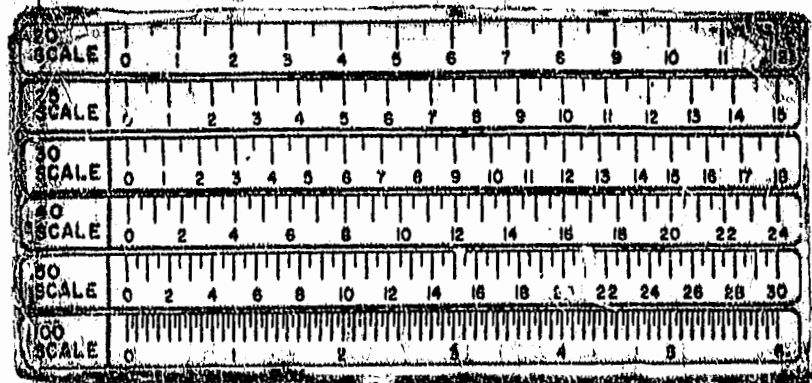
LANDMARK
DESIGN GROUP

Engineers • Planners • Surveyors
Landscape Architects • Environmental Consultants



KINGSMILL ROAD R/W VARIES (PRIVATE)

MATCH SHEET 5



With James City County
Recorded 10 day of July 2000
DOCUMENT # 00003227
By: [Signature]

PLAT RECORDED
P.B. NO. 78 W 22

11413W