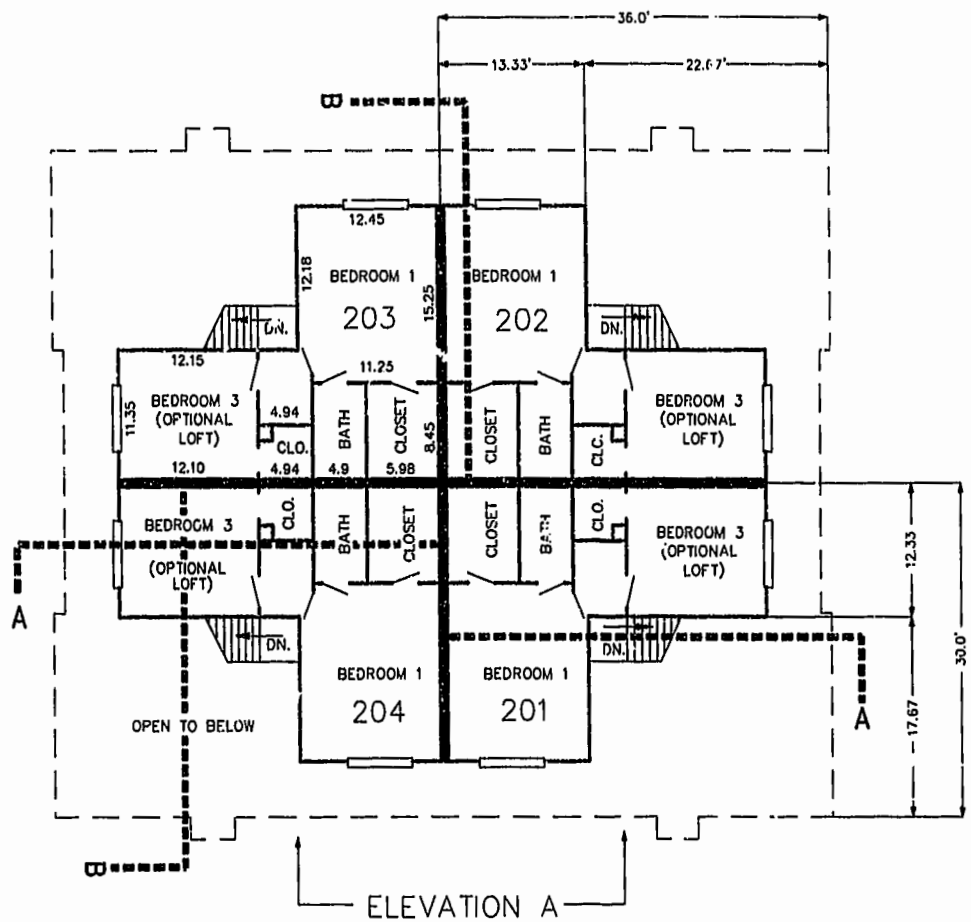
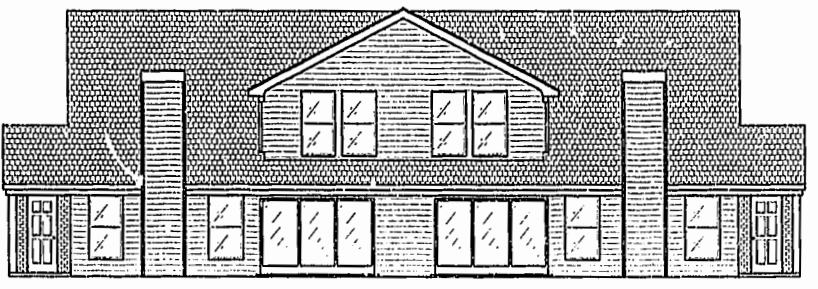


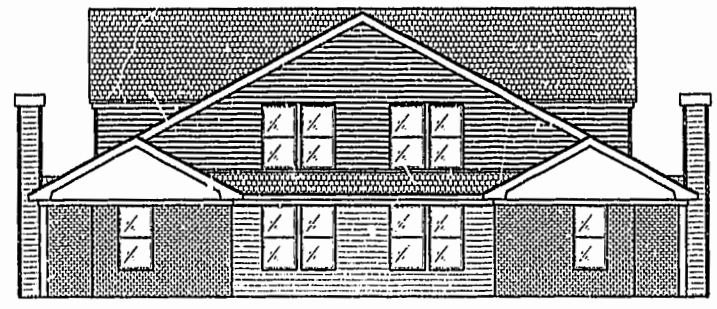
FIRST FLOOR PLAN  
(UNIT #203 IS TYPICAL)



SECOND FLOOR PLAN  
(UNIT #203 IS TYPICAL)

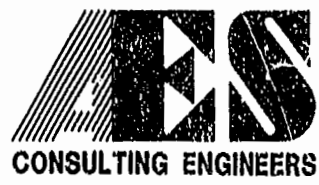


ELEVATION A



ELEVATION B

PLAT RECORDED IN  
PAGE NO. 78, PAGE 10-15



5248 Olde Towne Road, Suite 1  
Williamsburg, Virginia 23188  
(757) 253-0040  
Fax (757) 220-8994

PLAT OF CONDOMINIUM  
WESTGATE AT WILLIAMSBURG,  
A CONDOMINIUM  
PHASE SEVEN  
OWNED BY: 752 L.L.C.,  
A VIRGINIA LIMITED LIABILITY COMPANY  
CITY OF WILLIAMSBURG VIRGINIA



|                                |      |  |    |
|--------------------------------|------|--|----|
| Williamsburg James City County |      | Recorded                                   |    |
| 3-19-00                        |      | day of Feb 2000                            |    |
| DOCUMENT # 000698              |      | REVISY & WOODRIDGE, CLERK OF CIRCUIT COURT |    |
| No.                            | DATE | REVISION / COMMENT / NOTE                  | BY |

|                       |                 |
|-----------------------|-----------------|
| Designed<br>GTW/ADS   | Drawn<br>JFS    |
| Scale<br>1" = 10'     | Date<br>2/03/00 |
| Project No.<br>8395-6 |                 |
| Drawing No.<br>5 OF 6 |                 |