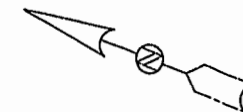


# EXHIBIT B-1 SUPPLEMENTAL CONDOMINIUM PLATS OF WYNDHAM PLANTATION CONDOMINIUM

WILLIAMSBURG, VIRGINIA

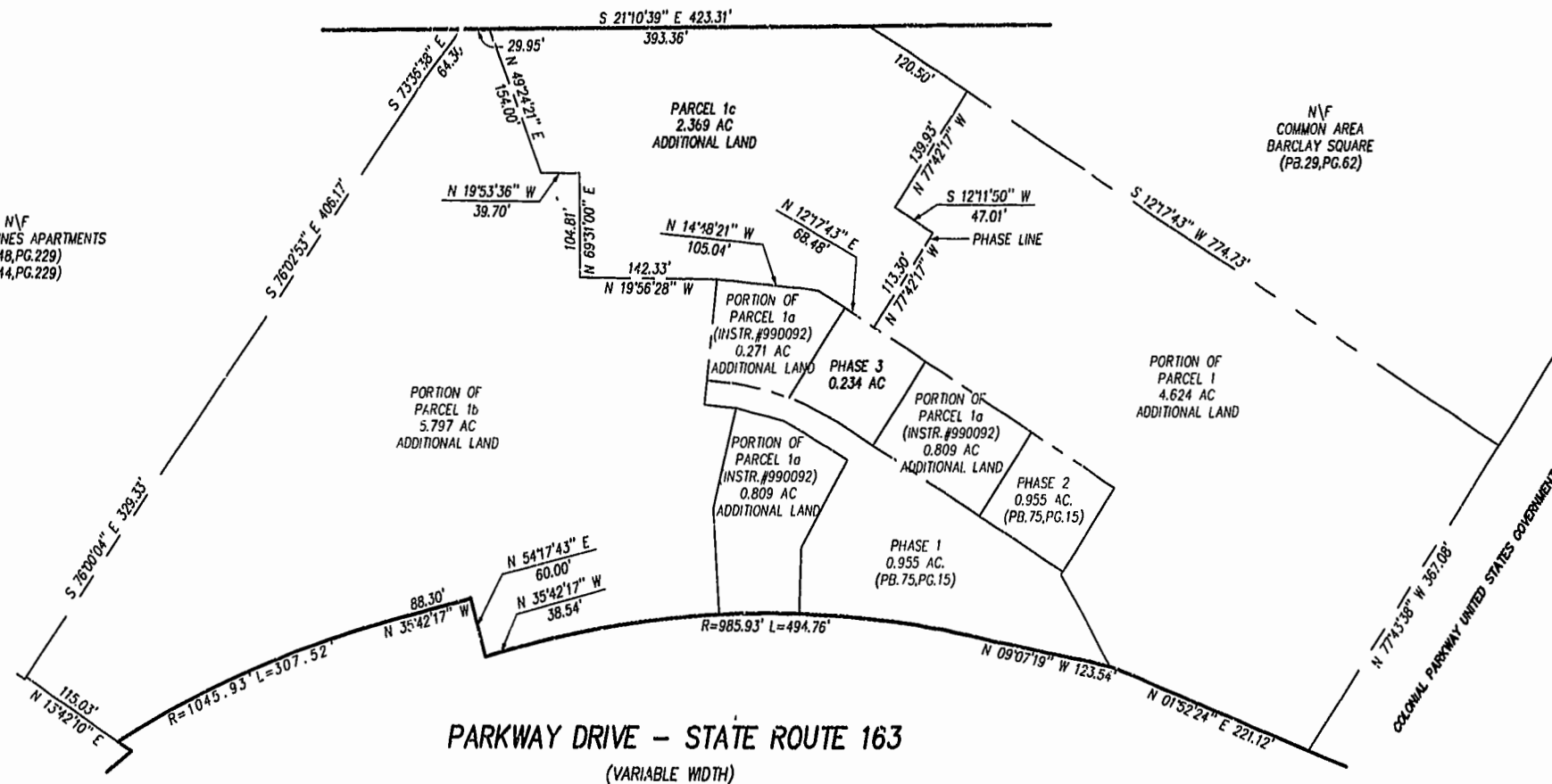
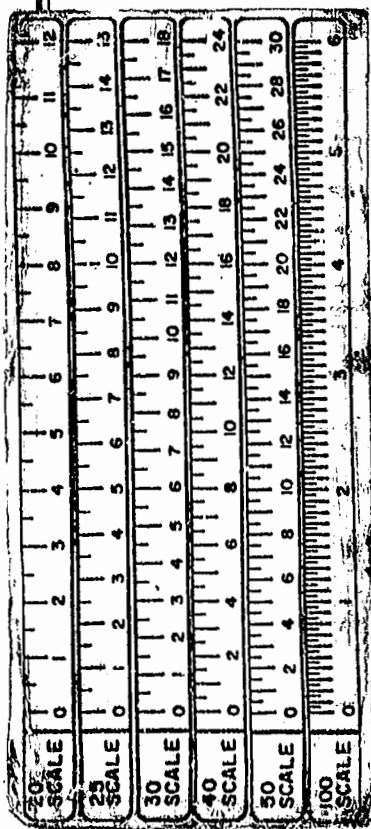
DATE: JUNE 20, 2000 SCALE: 1"=100'



## MERRIMAC TRAIL - STATE ROUTE 143 (FORMELY STATE ROUTE 16c)

N\F  
COLONIAL PINES APARTMENTS  
(DB.48,PG.229)  
(DB.44,PG.229)

N\F  
COMMON AREA  
BARCLAY SQUARE  
(PB.29,PG.62)



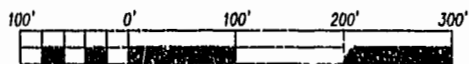
## PARKWAY DRIVE - STATE ROUTE 163 (VARIABLE WIDTH)

I HEREBY CERTIFY THAT THIS PLAT IS ACCURATE AND THAT IT COMPLIES WITH SECTION 55-79.58(A) OF THE VIRGINIA CONDOMINIUM ACT AS AMENDED AND THAT ALL UNITS OR PORTION THEREOF DEPICTED HEREON HAVE BEEN SUBSTANTIALLY COMPLETED EXCEPT AS OTHERWISE NOTED.

SIGNED: \_\_\_\_\_



DATE: 6-20-00



SCALE 1"=100'

2:52 PM  
Recorded 30 day of June 2000  
DOCUMENT # 000628  
Betty B. Workless, Clerk  
By Claudia M. Burt, Dep. Clerk

**Rickmond Engineering, Inc.**

PLAT RECORDED IN  
P.B. NO. 78 PAGE 6-9

Engineering  
Surveying  
Land Planning  
www.rickmond.com