

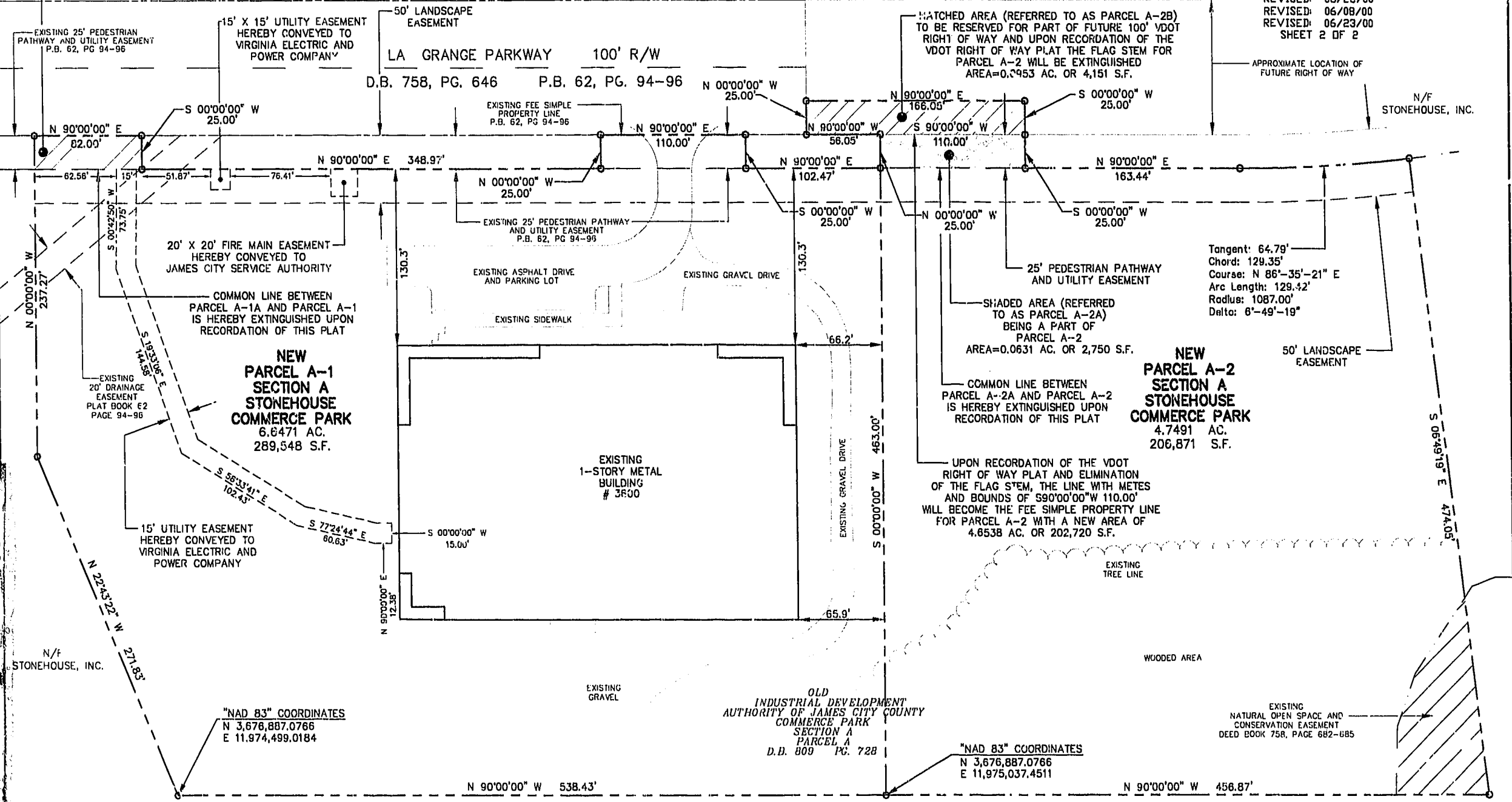
HATCHED AREA (REFERRED TO AS PARCEL A-1A) IS HEREBY CONVEYED FROM STONEHOUSE, INC. TO THE INDUSTRIAL DEVELOPMENT AUTHORITY OF JAMES CITY COUNTY (AS A PART OF NEW PARCEL A-1)
AREA=0.0471 AC. OR 2,050 S.F.

N/F
AMOCO ENRON SOLAR
COMMERCE PARK
SECTION A
PARCEL B
D.B. 758 PG. 721

RESUBDIVISION
PLAT OF
SECTION A, PARCEL A
OF
STONEHOUSE COMMERCIAL PARK
AT STONEHOUSE
FOR THE
INDUSTRIAL DEVELOPMENT AUTHORITY
OF THE COUNTY OF JAMES CITY, VIRGINIA

STONEHOUSE DISTRICT
JAMES CITY COUNTY, VIRGINIA
SCALE: 1"=50' 03/17/00
REVISED: 05/23/00
REVISED: 06/08/00
REVISED: 06/23/00
SHEET 2 OF 2

VIRGINIA STATE PLANE COORDINATE
SYSTEM (SOUTH ZONE) (NAD 83)



Tangent: 64.79'
Chord: 129.35'
Course: N 86°-35'-21" E
Arc Length: 129.42'
Radius: 1087.00'
Delta: 6°-49'-19"

NEW
PARCEL A-1
SECTION A
STONEHOUSE
COMMERCE PARK
6.6471 AC.
289,548 S.F.

NEW
PARCEL A-2
SECTION A
STONEHOUSE
COMMERCE PARK
4.7491 AC.
206,871 S.F.

OLD
INDUSTRIAL DEVELOPMENT
AUTHORITY OF JAMES CITY COUNTY
COMMERCE PARK
SECTION A
PARCEL A
D.B. 809 PG. 728

"NAD 83" COORDINATES
N 3,676,887.0766
E 11,974,499.0184

"NAD 83" COORDINATES
N 3,676,887.0766
E 11,975,037.4511

Williamsburg/James City County
12:41 PM
Recorded: 30 days on June 2000
DOCUMENT # 100012206
LITSY D. WOOLRIDGE, CLERK OF CIRCUIT COURT

PLAT RECORDED IN
P.B. NO. 78 PAGE 425

