

NOW OR FORMERLY
COLLEGE OF WILLIAM & MARY

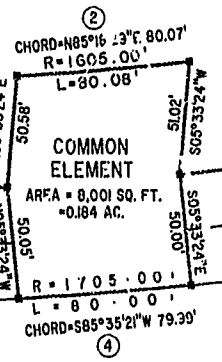
IRONBOUND

ROAD

T.P. 372-(0A)-00-028
NOW OR FORMERLY
JEROME & EVELYN RANDOLPH
(D.B. 30, PG. 470)
ZONE: RM-2

T.P. 372-(0A)-00-030
NOW OR FORMERLY
JEROME & EVELYN RANDOLPH
(D.B. 37, PG. 379)
ZONE: RM-2

ADDITIONAL LAND

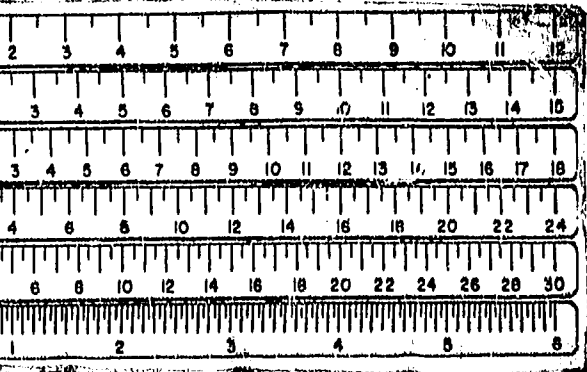


T.P. 372-(05)-00-001
NOW OR FORMERLY
CHESAPEAKE MEDIA, INC.
(D.B. 74, PG. 121)
(M.B. 42, PG. 25)
ZONE: B-2 CONDITIONAL

ROLAND STREET
40' R/W

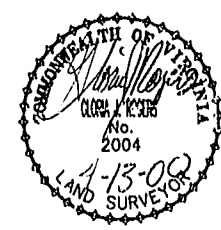
MATCH LINE
SEE SHEET 3

MATCH LINE
SEE SHEET 3



Williamsburg, James City County
3:11 PM
29 July 2004
COMMENT # 000665
REBEY D. WOOLRIDGE, CLERK OF CIRCUIT COURT

PLAT RECORDED IN
P.B. NO. 42 PAGE 1-3



BRISTOL COMMONS
A CONDOMINIUM COMMUNITY
PHASE ONE
FOR
KEY GROUP, LLC
CITY OF WILLIAMSBURG, VIRGINIA

Hassell & Folkes, P.C. Engineers Surveyors Planners Chesapeake, VA 23320 (757)547-9531	SIZE C	CONTRACT NO 98062	DISK/BOX 123A/15	FILENAME BRISTOLDWG	REV.
SCALE: 1"=50'		DATE: 01/20/00		SHEET 2 of 3	