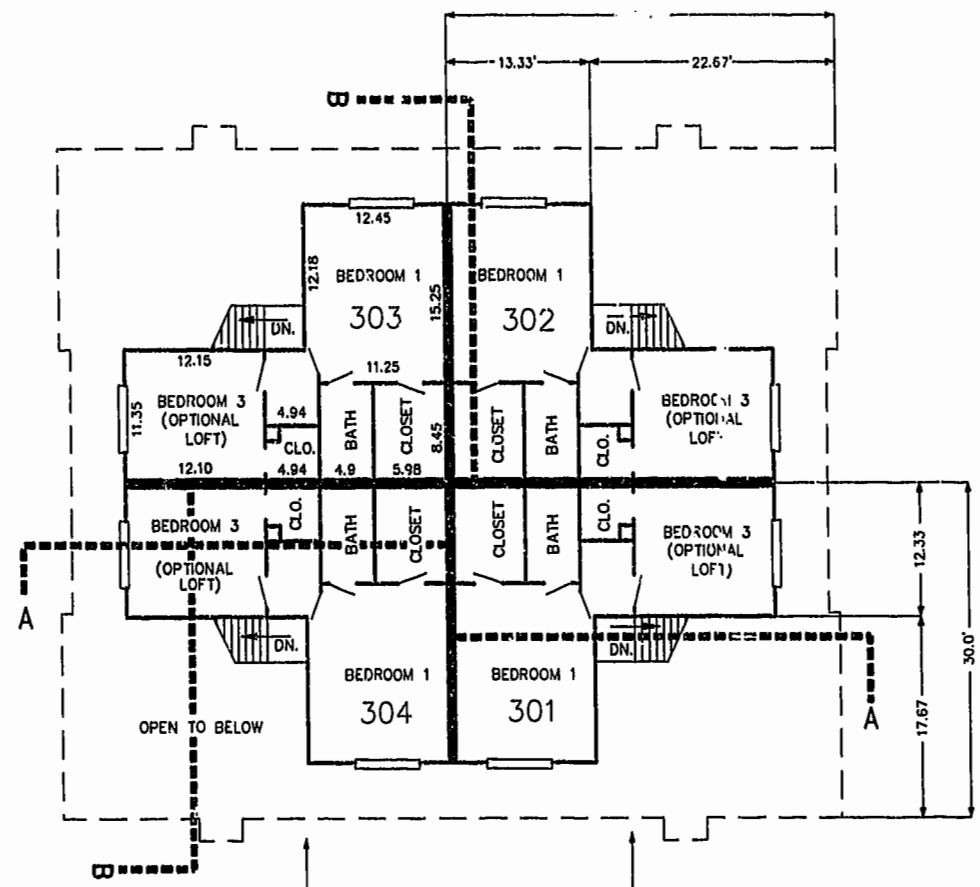


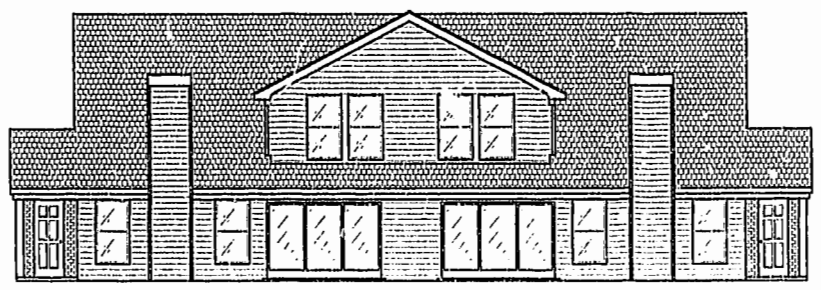
ELEVATION A
FIRST FLOOR PLAN

(UNIT #303 IS TYPICAL)
(UNIT #302 IS TYPICAL EXCEPT AS NOTED)

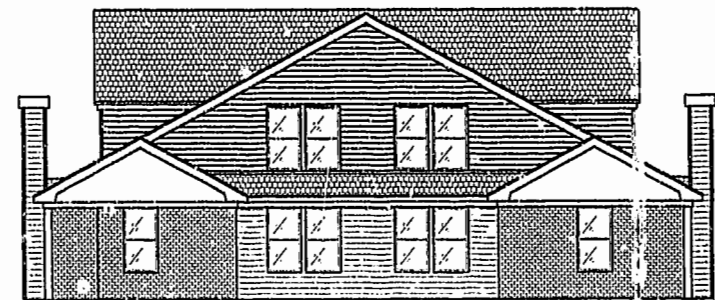


ELEVATION A
SECOND FLOOR PLAN

(UNIT #303 IS TYPICAL)

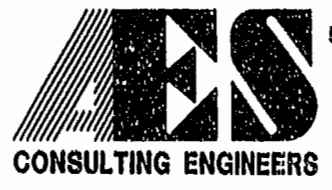
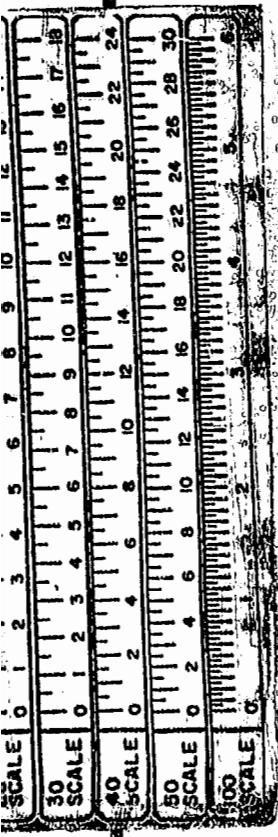


ELEVATION A



ELEVATION B

Williamsburg/James City County
12.13.00
21 Jan 2001
000630
RETSY B. WOOLRIDGE, CLERK OF CIRCUIT COURT



5248 Olde Towne Road, Suite 1
Williamsburg, Virginia 23188
(757) 253-0040
Fax (757) 220-8994

PLAT OF CONDOMINIUM
WESTGATE AT WILLIAMSBURG,
A CONDOMINIUM
PHASE SIX
OWNED BY: 752 L.L.C.,
A VIRGINIA LIMITED LIABILITY COMPANY
CITY OF WILLIAMSBURG VIRGINIA



No.	DATE	REVISION / COMMENT / NOTE	BY

Designed GTW/ADS	Drawn JFS
Scale 1" = 10'	Date 2/01/00
Project No. 8395-6	
Drawing No. 5 OF 6	