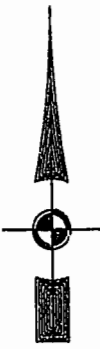
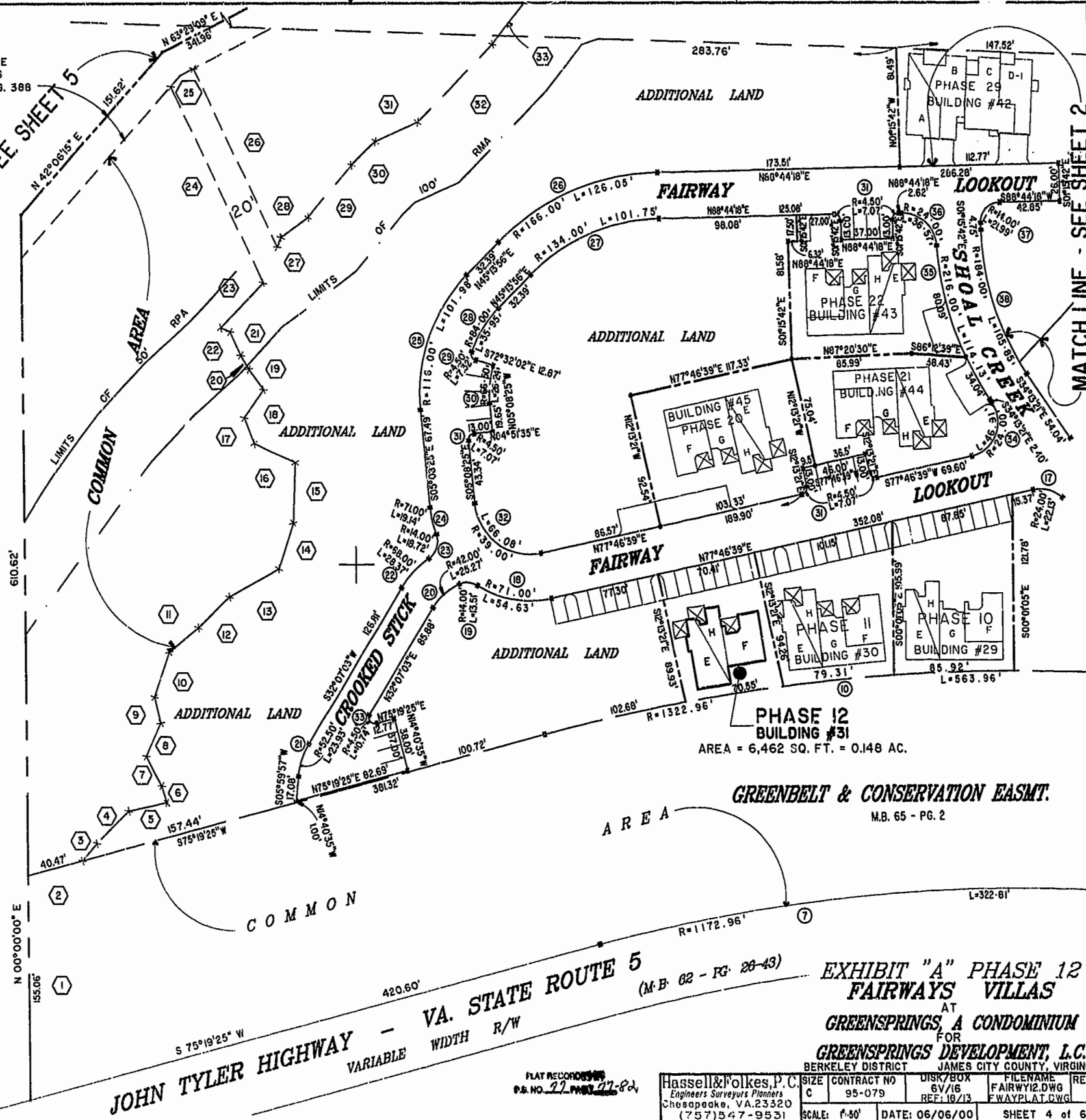


EXIST. 20' JAMES CITY COUNTY SERVICE AUTHORITY SAN. SEWER EASEMENT AS SHOWN IN AS-BUILT LOCATION, D.B. 141 - PG. 388



MATCH LINE - SEE SHEET 5

46-1-01-0-0001  
"GREENSPRINGS PLANTATION"  
(DB 322, PG 254)

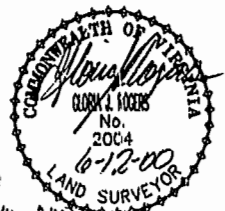


PHASE 12 BUILDING #31  
AREA = 6,462 SQ. FT. = 0.148 AC.

GREENBELT & CONSERVATION EASMT.  
M.B. 65 - PG. 2

VA. STATE ROUTE 5  
(M.B. 62 - PG. 28-43)  
JOHN TYLER HIGHWAY - VARIABLE WIDTH R/W

EXHIBIT "A" PHASE 12  
FAIRWAYS VILLAS  
AT  
GREENSPRINGS, A CONDOMINIUM  
FOR  
GREENSPRINGS DEVELOPMENT, L.C.  
BERKELEY DISTRICT JAMES CITY COUNTY, VIRGINIA



William H. Woolbridge  
10-12-00  
DOCUMENT # 1111111111  
WHSY & WOOLBRIDGE, CLERK OF CIRCUIT COURT

PLAT RECORDED  
P.B. NO. 77 PAGE 80

Hassell & Polkes, P.C. Engineers Surveyors Planners Chesapeake, VA. 23320 (757) 547-9531	SIZE CONTRACT NO C 95-079	DISK/BOX 6V/16 REF: 10/13	FILENAME FAIRW12.DWG FWAYPLAT.DWG	REV.
SCALE: 1"=50'	DATE: 06/06/00	SHEET 4 of 6		