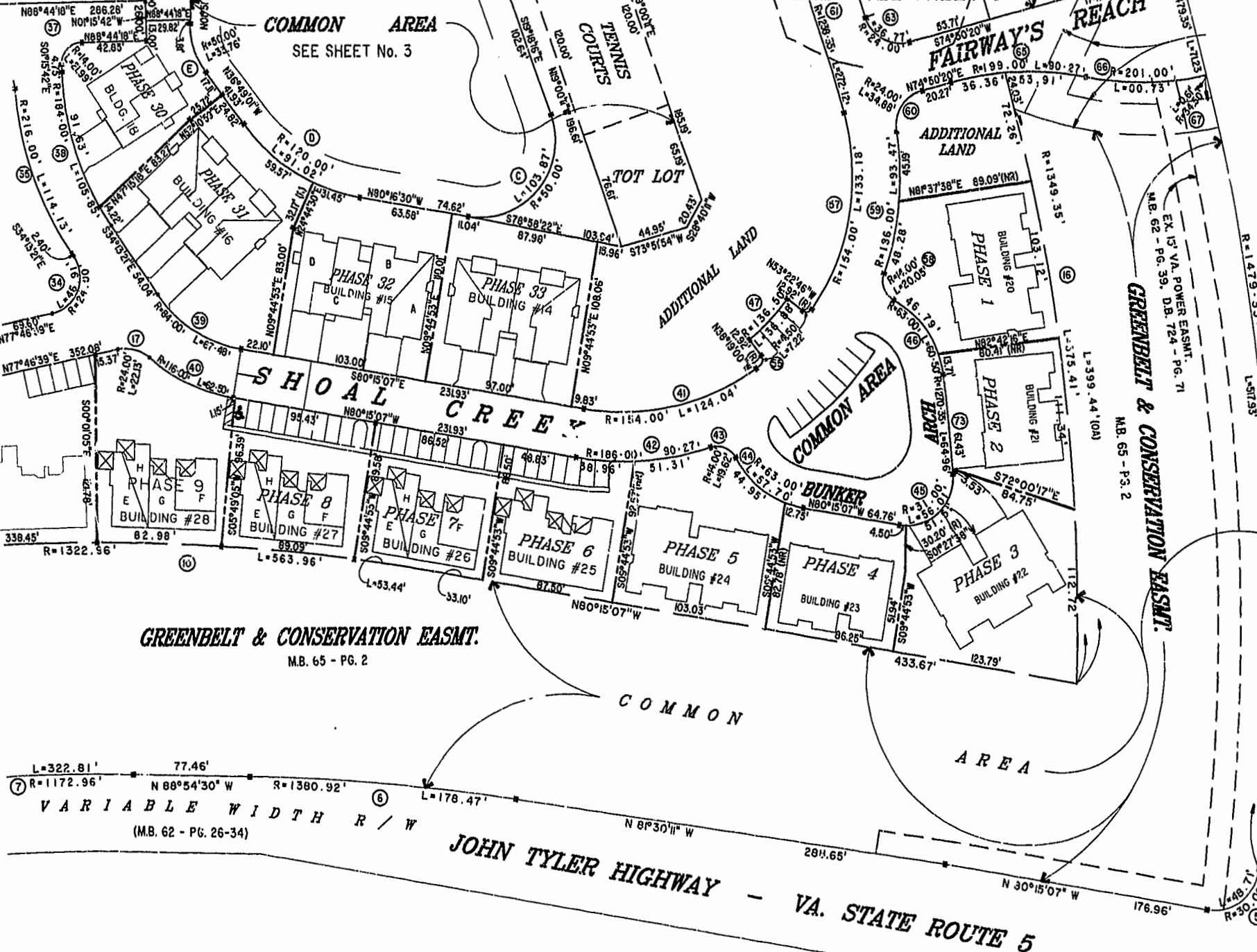


MATCH LINE SEE SHEET 4

MATCH LINE - SEE SHEET 3



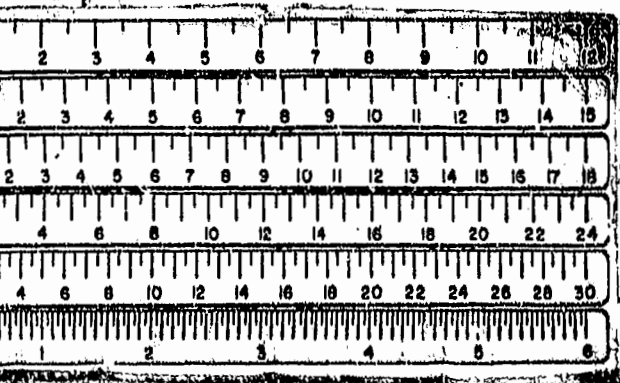
LEGACY
VARIABLE WIDTH R/W
(M.B. 62 - PG. 26-34)

DRIVE

GREENBELT & CONSERVATION EASMT.
M.B. 65 - PG. 2

VARIABLE WIDTH R/W
(M.B. 62 - PG. 26-34)

JOHN TYLER HIGHWAY - VA. STATE ROUTE 5



PLAT RECORDED IN
P.L. NO. 77 PAGE 22-82

Williamsburg James City County
10:51 AM
Recorded 21 day of June 2004
DOCUMENT # 00001434
RETSY B. WOOLFOOD, CLERK OF CIRCUIT COURT

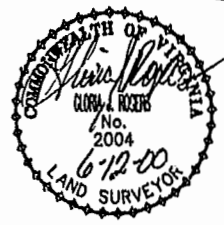


EXHIBIT "A" PHASE 12
FAIRWAYS VILLAS
AT
GREENSPRINGS, A CONDOMINIUM
FOR
GREENSPRINGS DEVELOPMENT, L.C.

Hassell & Polkes, P.C. Engineers Surveyors Planners Chesapeake, VA 23320 (757) 547-9531		CONTRACT NO 95-079	DISK/BOX 6V/16 REF. 18/13	FILENAME FAIRWY12.DWG FWAYPLAT.DWG	RE...
SCALE: 1"=50'	DATE: 06/06/00	SHEET 2 of 6			