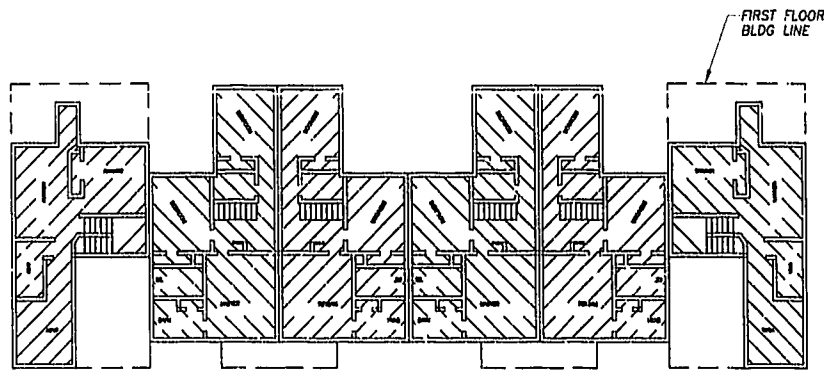
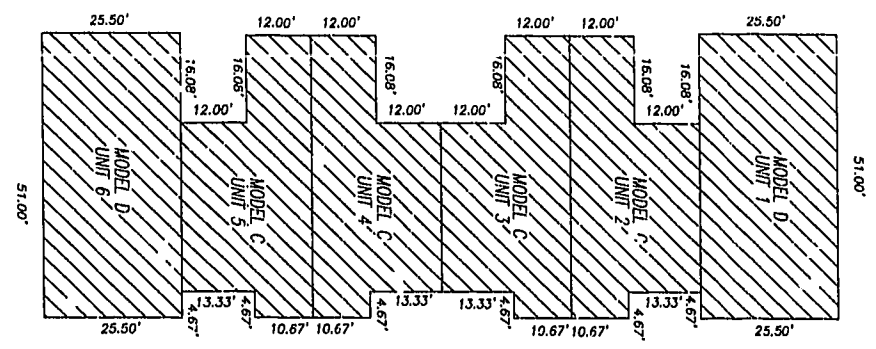


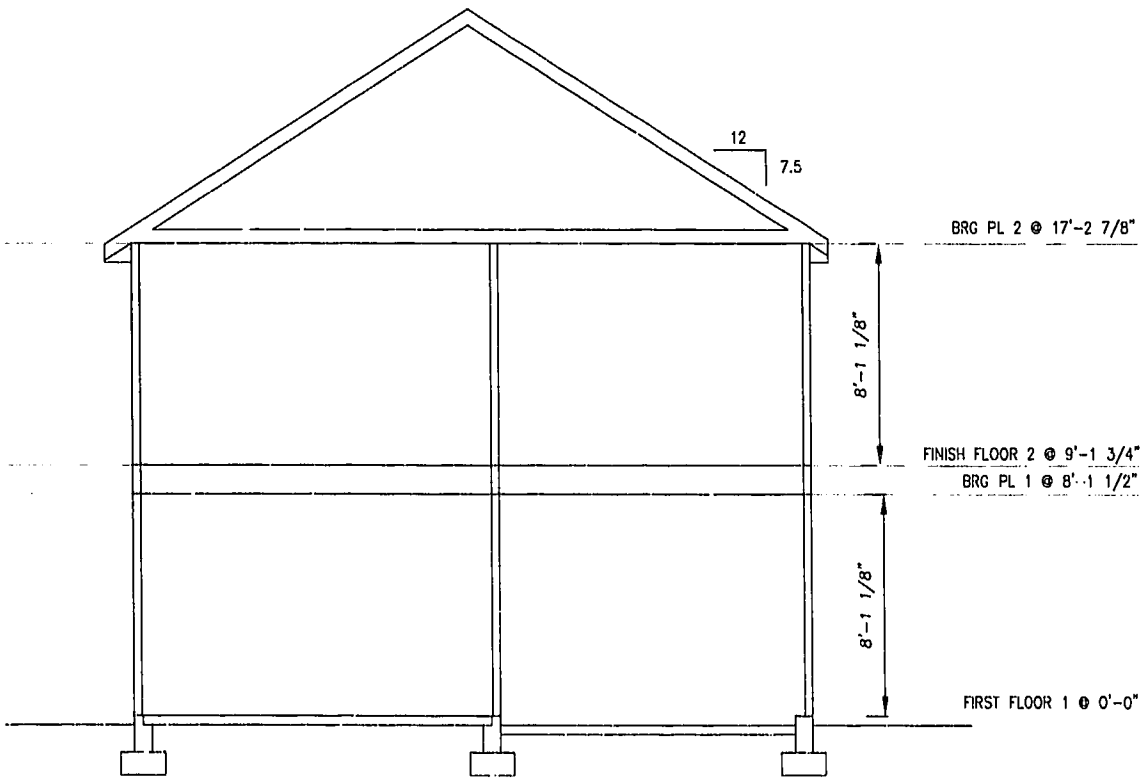
NOTE:  
ALL BUILDING DIMENSIONS SHOWN ARE EXTERIOR DIMENSIONS



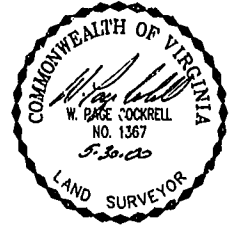
SECOND FLOOR



FIRST FLOOR



TYPICAL BUILDING SECTION



THE UNDERSIGNED CERTIFIES THAT THESE PLANS ARE ACCURATE AND COMPLY WITH THE PROVISIONS OF CODE OF VIRGINIA, SECTION 55-79.58.B AND THAT ALL UNITS OR PORTIONS THEREOF DEPICTED HEREON AND ALL COMMON ELEMENTS HAVE BEEN SUBSTANTIALLY COMPLETED.

SIGNED: *W. Page Cockrell*  
W. PAGE COCKRELL, L.S.

EXHIBIT B-5

**SUPPLEMENTAL CONDOMINIUM PLAT**  
**OF**  
**CROMWELL RIDGE CONDOMINIUM**  
JAMES CITY COUNTY, VIRGINIA

DATE: 5/23/00 SHEET 3 OF 5 SCALE: 1"=20'  
PROJECT NO: 30807.00 DRAWN BY: SAA

**VHB** Vanasse Hangen Brustlin, Inc.  
Transportation Land Development Environmental Services  
11832 Rock Landing Drive, Suite 201  
Newport News, Virginia 23606  
(757) 873-3386 • FAX (757) 873-0757

LEGEND  
UNIT AREA

GRAPHIC SCALE  
SCALE: 1"=20'

PLAT RECORDED IN  
PL. NO. 49, PAGE 166-710

Williamsburg/James City County  
12:18 PM  
Recorded 31 day of May 2000  
DOCUMENT # 000010315  
Sentry B. W. ... Clerk  
By Chaudin ...

